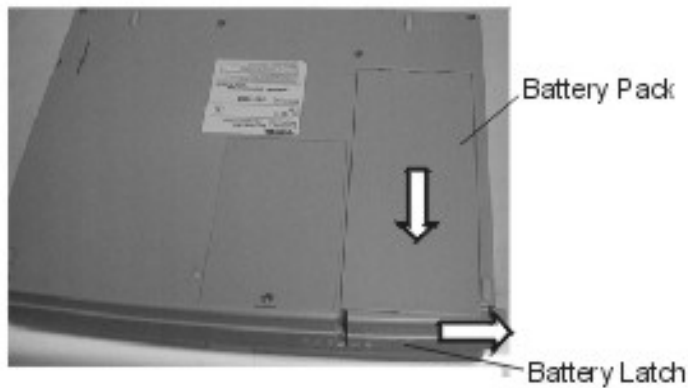


# FIELD REPLACEABLE UNIT DOCUMENTATION

## Satellite™

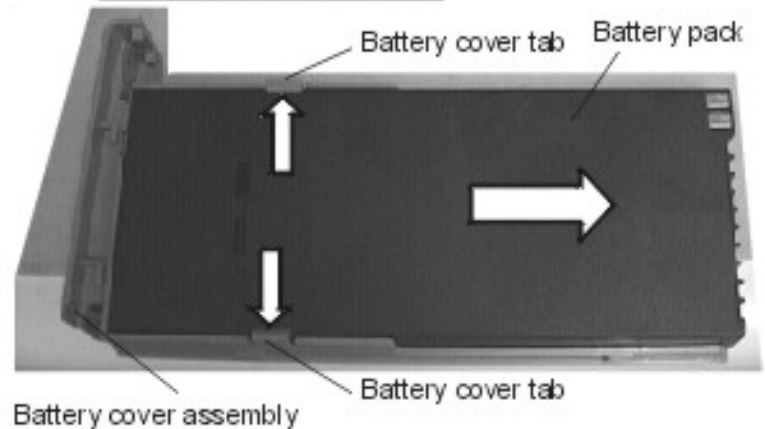
### 4000/4010/4020 Series

#### BATTERY PACK REMOVAL



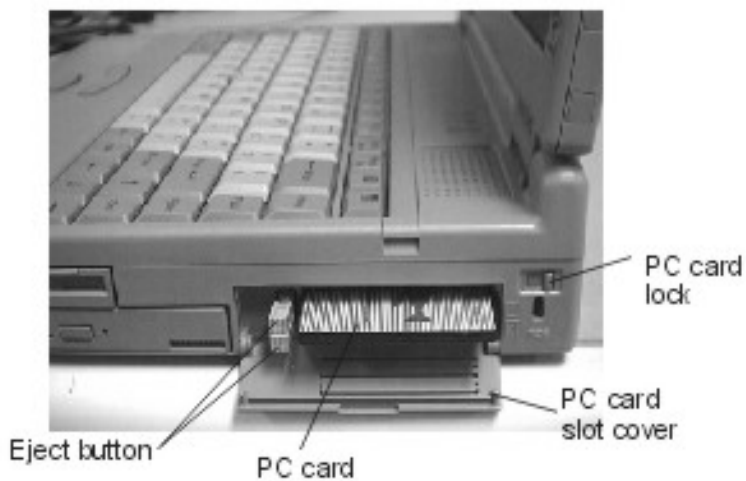
1. Turn the computer upside down as shown.
2. Slide the **battery latch** in the direction of the arrow to release it.
3. Pull the **battery pack** slightly forward and lift out the battery pack.

#### BATTERY REMOVAL



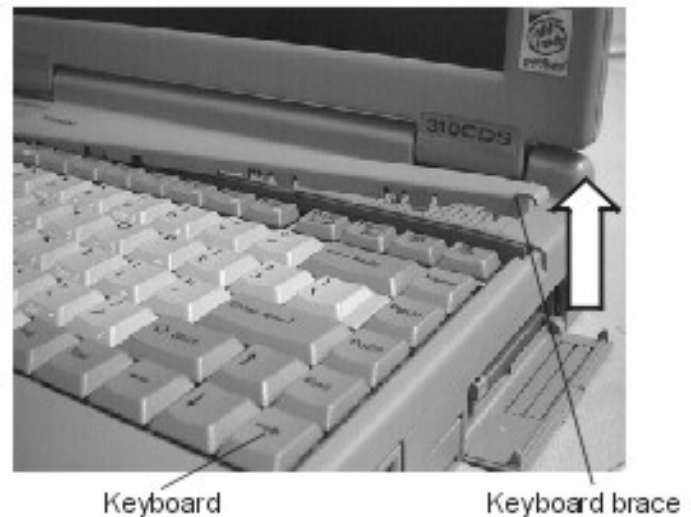
1. Push two tabs on **battery cover ass'y.** outwards and remove the **battery pack** in the direction of the arrow.

#### OPTIONAL PCMCIA CARD REMOVAL



1. Open the **PC card slot cover**.
2. Slide the **PC card lock** to the unlock position.
3. Pull out the **eject button** next to the PC card you want to remove and press the button to pop the PC card out slightly.
4. Grasp the **PC card** and remove it.

#### KEYBOARD REMOVAL



1. Open the display panel.
2. Lift out the **Keyboard brace**.

# TOSHIBA

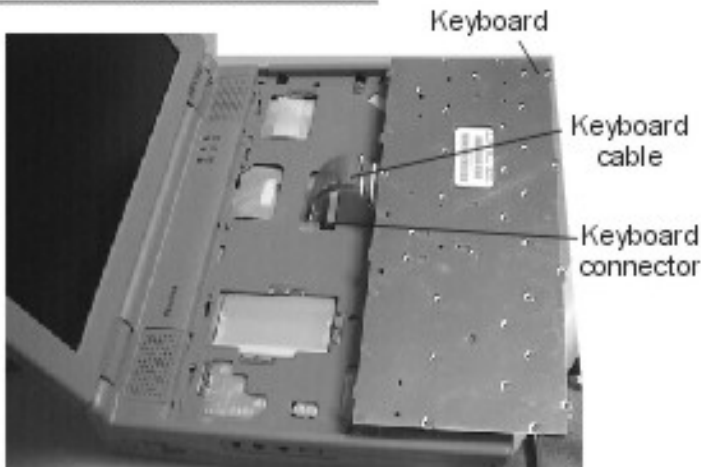
Tough Enough for Today's World.

# FIELD REPLACEABLE UNIT DOCUMENTATION

## Satellite™

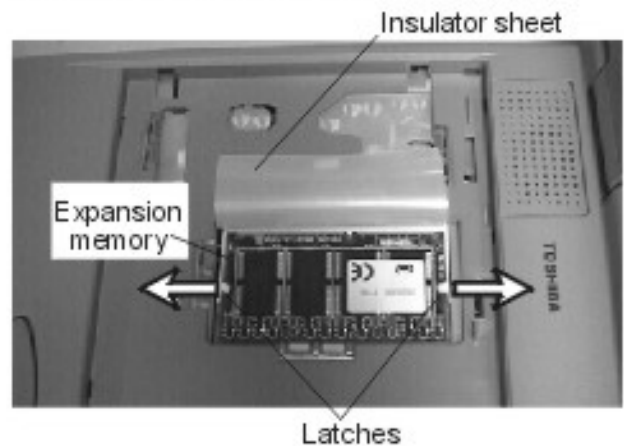
### 4000/4010/4020 Series

#### KEYBOARD REMOVAL



1. Rotate the **keyboard** out and lay it face down on the palm rest. Be careful not to apply pressure to the **keyboard cable**.
2. Disconnect the **keyboard cable** from **PJ10** on the system board and remove the **keyboard**.

#### EXPANSION MEMORY REMOVAL



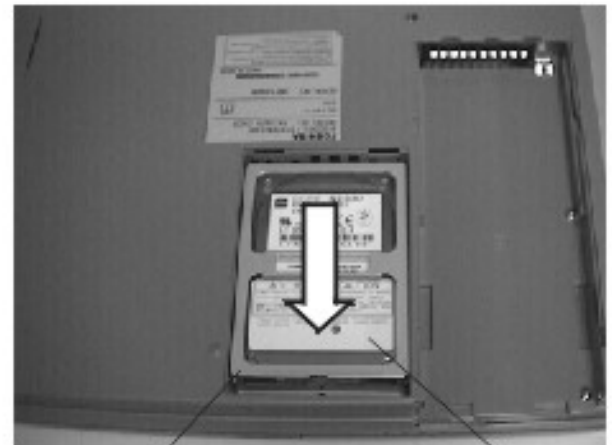
1. Lift up the **insulator sheet** covering the **expansion memory**. Make sure the computer is in boot mode.
2. Gently press out the **latches** and the expansion memory will pop up.
3. Grasp the **expansion memory** and pull it out.

#### HDD REMOVAL



M2.5x25 silver screw      HDD slot cover

1. Turn the computer upside down.
2. Remove **one M2.5x25 silver screw**.
3. Lift off the **HDD slot cover**.



HDD bracket      HDD

1. Grasp the **HDD bracket** and pull it forward to disconnect the **HDD**, then grasp the back end of the bracket and lift it out.
2. Remove **four flat-head screws** from the **HDD bracket** and lift out the **HDD**.

# TOSHIBA

Tough Enough for Today's World.

# FIELD REPLACEABLE UNIT DOCUMENTATION

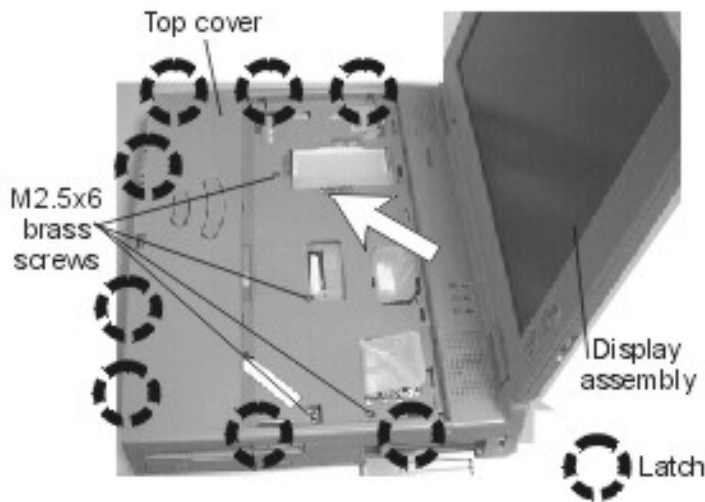
## Satellite™

### 4000/4010/4020 Series

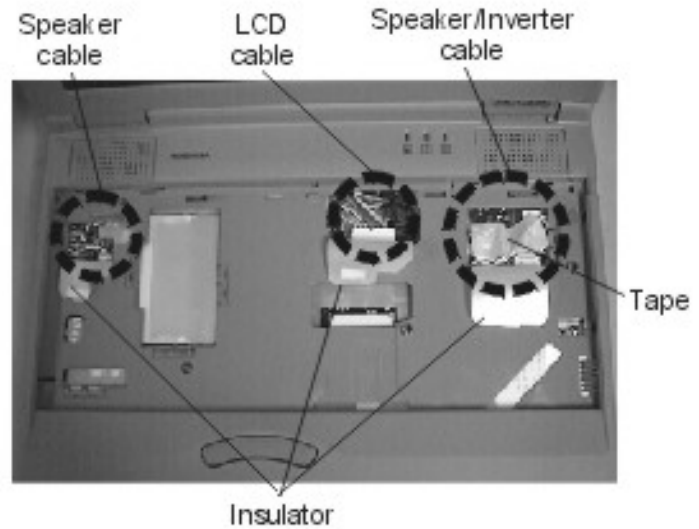
#### TOP COVER REMOVAL



1. Turn the computer upside down and remove **two M2.5x6 silver screws** from the battery slot, **one M2.5x6 silver screw** from the HDD slot, **five M2.5x25 silver screws** from the bottom cover and **two M2.5x6 silver screws** from the back of the computer.
2. Turn the computer right side up and open the display.

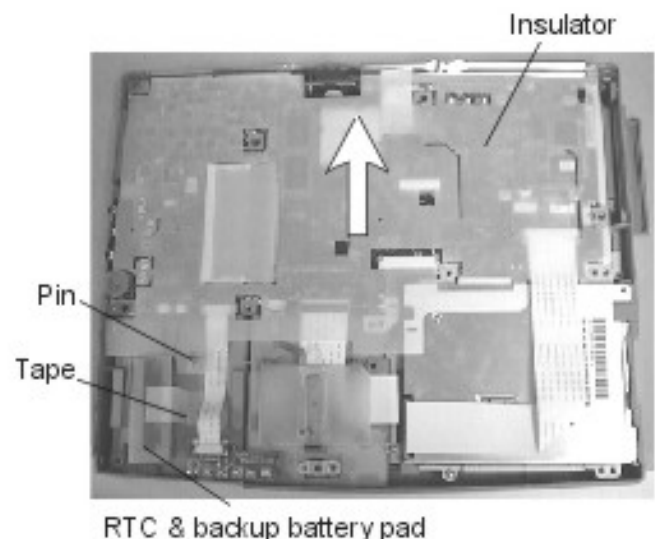


1. Remove **four M2.5x6 brass screws** securing the **top cover**.
2. Release **eight latches** securing the **top cover** and **display assembly**: **three latches** on the left side, **three latches** on the front and **two latches** on the right side.
3. Lift off the **top cover** and **display assembly** in the direction of the arrow.



1. Lift up the insulator covering four cables and disconnect them: **left speaker cable** from **PJ21**, **right speaker cable** from **PJ22**, **FL cable** from **PJ4** and **LCD cable** from **PJ3** (DSTN) or **PJ23** (TFT) models.  
**NOTE:** Keep tape covering Speaker/Inverter cables for assembly.

#### INSULATOR REMOVAL



1. Lift out the **insulator** over the positioning pin.  
**NOTE:** Be sure to reinstall the insulator when assembling the unit. If the insulator is not installed the unit will not power ON.

# TOSHIBA

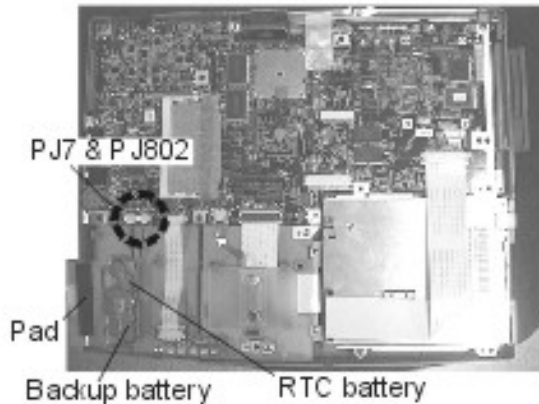
Tough Enough for Today's World.

# FIELD REPLACEABLE UNIT DOCUMENTATION

## Satellite™

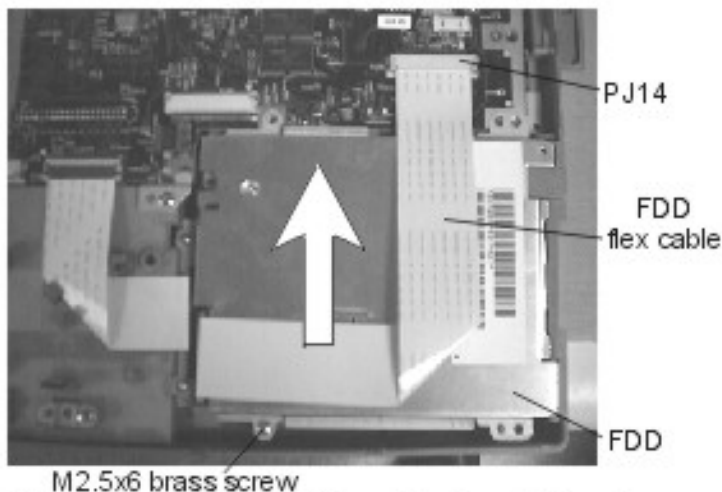
### 4000/4010/4020 Series

#### RTC and BACKUP BATTERY REMOVAL



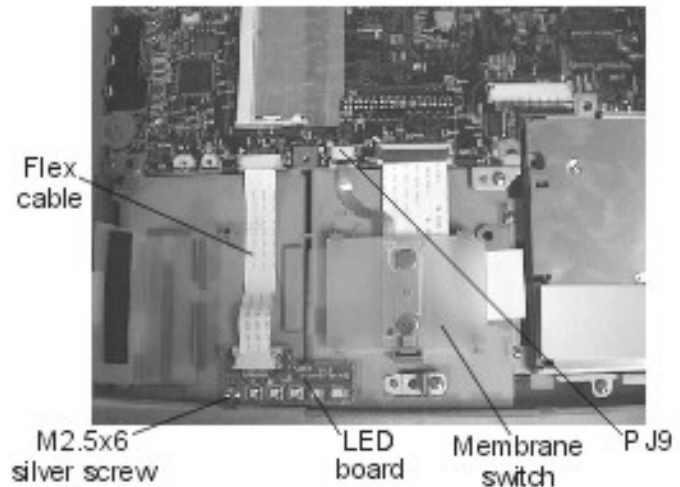
1. Remove the tape securing a **pad** over the RTC and backup batteries.
2. Disconnect the **RTC battery cable** from **PJ7** on the system board.
3. Disconnect the **backup battery** from **PJ802** on the system board.
4. Lift out the **RTC** and **backup battery**.

#### FDD REMOVAL



1. Disconnect the **FDD flexible cable** from **PJ14** on the system board.
2. Remove **one M2.5x6 brass screw** securing the **FDD** and remove the **FDD**.
3. Remove four flat-head screws securing the FDD to the FDD case and separate the FDD from its case.
4. Disconnect the **FDD flexible cable** from the **FDD**.

#### LED BOARD and MEMBRANE SWITCH REMOVAL



1. Disconnect the **LED board flexible cable** from the **LED board**.
2. Remove **one M2.5x6 silver screw**.
3. Lift up the left side of the **LED board** to clear a latch on the right side to remove the board.
4. Disconnect the **membrane switch cable** from **PJ9** on the system board.
5. Release one latch at the front edge of the **membrane switch** and lift out the membrane switch.

**NOTE:** The FDD, flexible cable and FDD bracket are all separate parts. Please DO NOT send the defective FDD with the flexible cable and bracket to TOSHIBA. The four screws, flexible cable and the FDD bracket should be kept to assemble the FDD you receive from TOSHIBA for the customer's unit.

# TOSHIBA

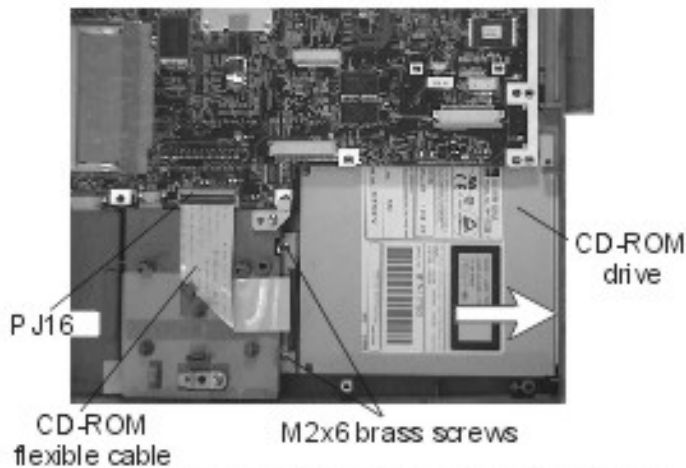
Tough Enough for Today's World.

# FIELD REPLACEABLE UNIT DOCUMENTATION

## Satellite™

### 4000/4010/4020 Series

#### CD-ROM DRIVE REMOVAL

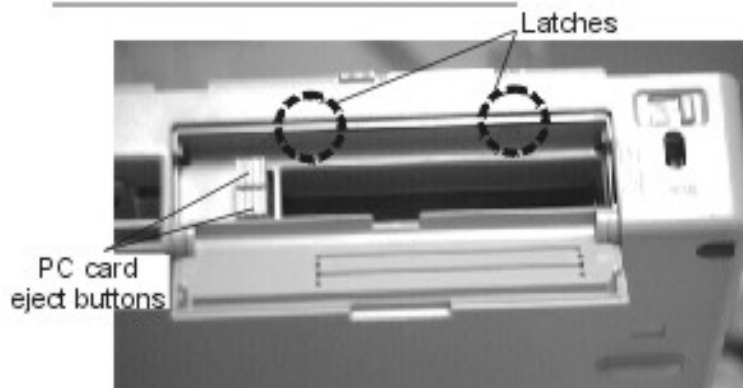


1. Disconnect the **CD-ROM flexible cable** from **PJ16** on the system board.
2. Remove **two M2x6 brass screws** securing the CD-ROM drive.
3. Slide out the **CD-ROM drive** in the direction of the arrow.

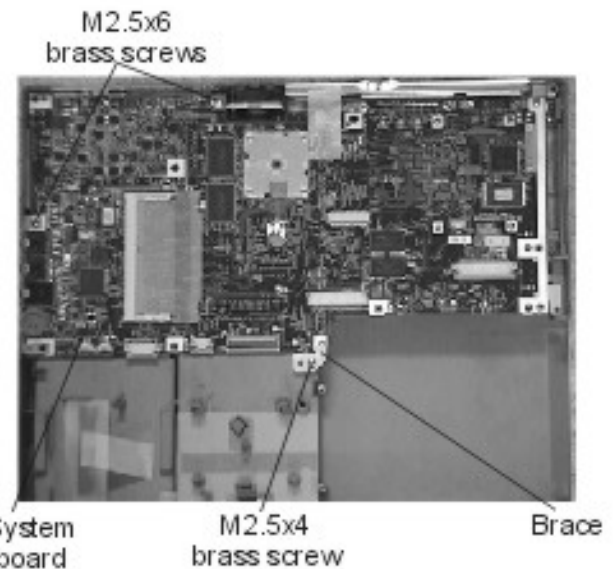
**NOTE:** The CD-ROM, flexible cable and bracket are all separate parts. Please **DO NOT** send the defective CD-ROM, flexible cable and bracket to TOSHIBA. The two screws, flexible cable and the CD-ROM bracket should be kept to assemble the CD-ROM you receive from TOSHIBA for the customer's unit.

**CAUTION:** When you lock P J998 on the CD-ROM connector and PJ16 on the system board, push both sides of the connector lever at the same time. If you push the center of the lever, the cable can become disconnected easily or the connector broken.

#### SYSTEM BOARD REMOVAL



1. You will first remove the PC card slot cover. Pull out the **PC card eject buttons** and push them in fully, do not bend them.
2. Insert tweezers between the top of the PC card slot cover and the bottom cover of the computer to release **two latches**.
3. Pull the top of the **PC card slot cover** forward to remove it. Two internal **latches** prevent the card from being pulled straight out, so rotate the top.



4. Disconnect the following five cables: **RTC battery cable** from **PJ14**, **backup battery cable** from **PJ802**, **LED board flexible cable** from **PJ15**, **membrane switch cable** from **PJ17** and **CD-ROM flexible cable** from **PJ12** on the system board.
5. Remove **two M2.5x4 brass screws**. One securing the system board directly and the other securing a small brace on the corner of the system board. Lift out the **brace** with the screw.
2. Remove **two M2.5x6 brass screws** securing the system board.
3. Lift up the left side of the **system board** about 5 cm and pull it out from the left side to avoid damaging the PC card eject buttons.

# TOSHIBA

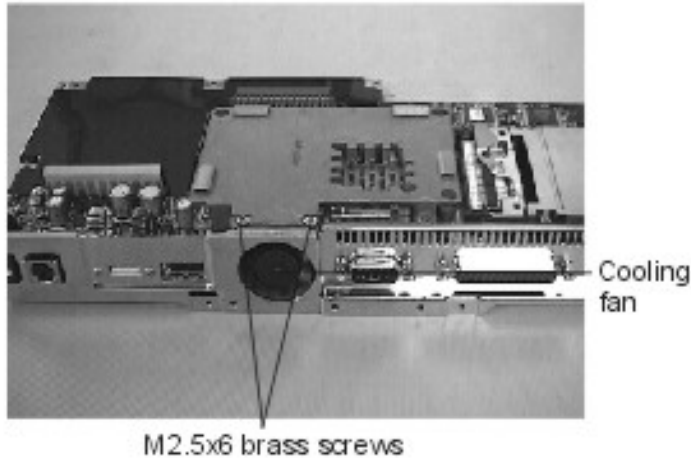
Tough Enough for Today's World.

# FIELD REPLACEABLE UNIT DOCUMENTATION

## Satellite™

### 4000/4010/4020 Series

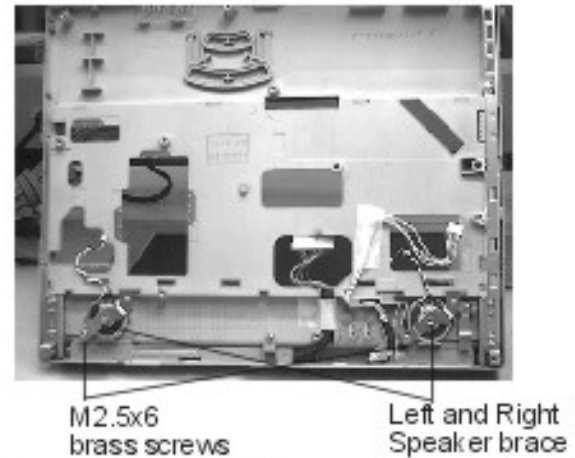
#### COOLING FAN REMOVAL



1. Remove Tape covering PJ8 and the fan cable.
2. Disconnect the fan cable from P J8 on the system board.
3. Remove **two M2.5x6 brass screws** securing the cooling fan.
4. Lift out the **cooling fan** from the **systemboard**.

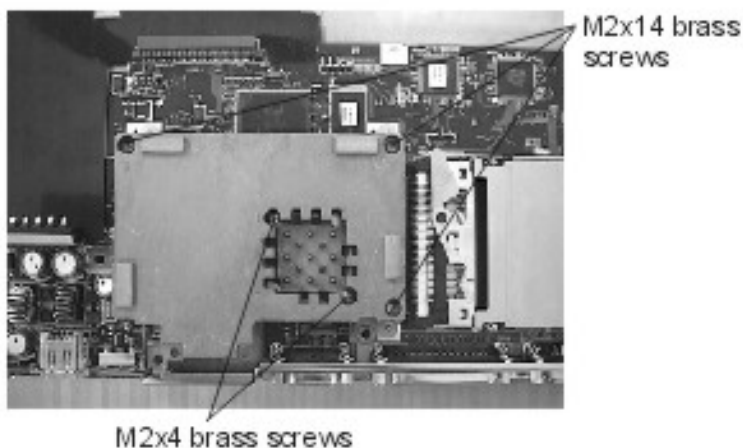
**NOTE:** The cooling fan and system board are separate parts. Please DO NOT send the fan to TOSHIBA with defective system boards. The fan and two screws should be kept to be attached to the system board you receive from TOSHIBA for the customers unit.

#### REMOVING THE SPEAKERS

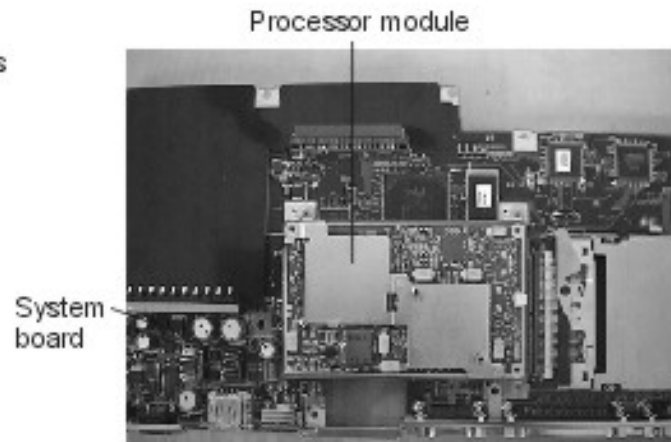


1. Remove one **M2.5x6 brass screw** securing each **speaker brace**.
2. Remove each brace and lift out the speakers.

#### CPU BOARD REMOVAL



1. Remove **three M2x14 brass screws** and **two M2x4 brass screws** securing the processor module to the system board, in the following order: 5--4-3-2-1
2. Lift out the heat sink.



3. Grasp the **processor module** evenly on both sides and pull the module carefully to disconnect it from PJ1 on the **systemboard**.

# TOSHIBA

Tough Enough for Today's World.

# FIELD REPLACEABLE UNIT DOCUMENTATION

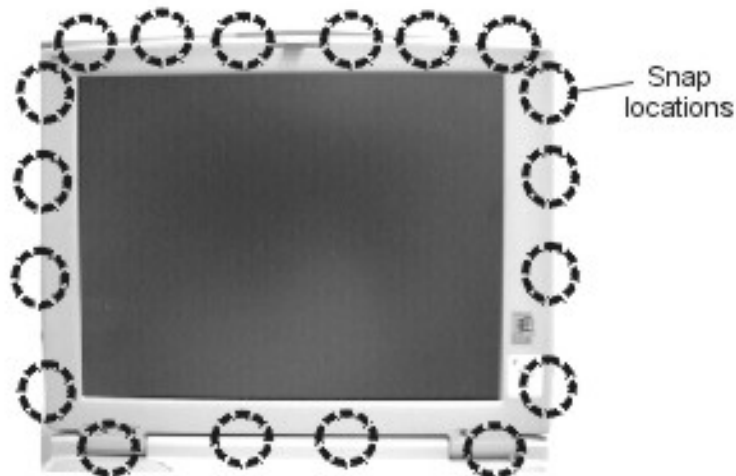
## Satellite™

### 4000/4010/4020 Series

#### DISPLAY MASK REMOVAL



1. Remove **mask seal** and **name seal** at the hinges to expose **two M2.5x6 brass screws** securing the **display mask**.
2. Remove the **two M2.5x6 brass screws** that were covered by the seals.
3. A total of **18 snaps** secure the display mask. Carefully insert your fingers between the mask and the LCD panel and pry open the snaps. Start with six snaps across the top of the display mask.



4. Continue unsnapping the mask along the sides (4 snaps on each side), at the bottom (2 snaps) and at the hinges (2 snaps).

# TOSHIBA

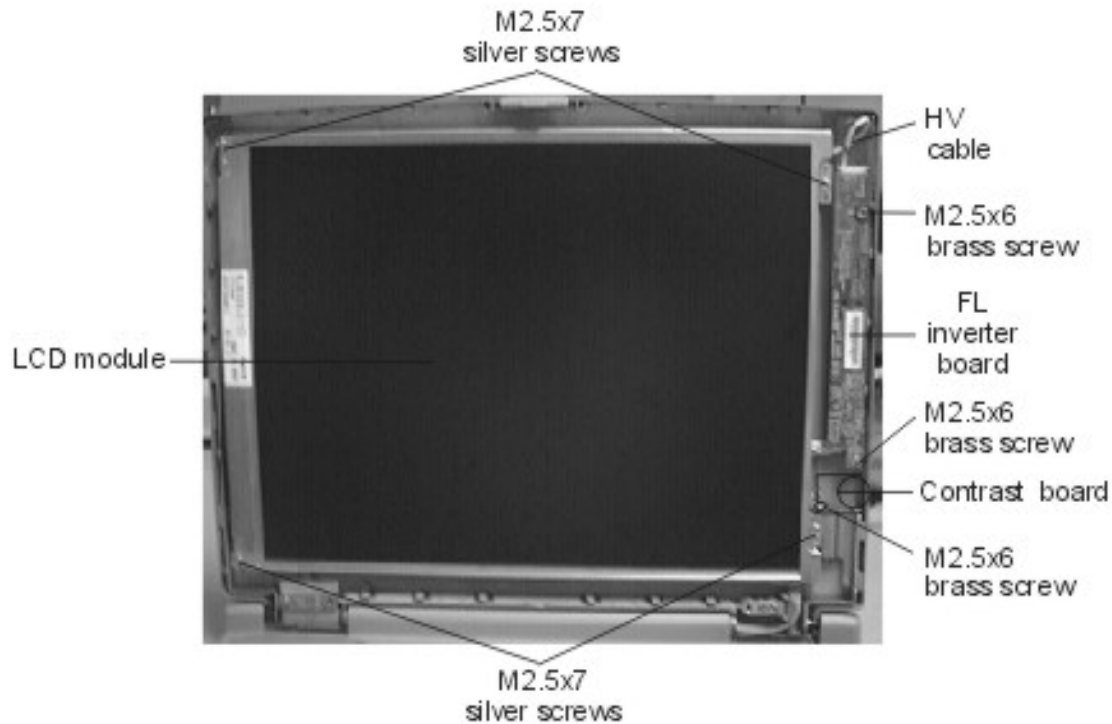
**Tough Enough for Today's World.**

# FIELD REPLACEABLE UNIT DOCUMENTATION

## Satellite™

### 4000/4010/4020 Series

#### FL INVERTER and SCREEN REMOVAL



1. Remove **two M2.5x6 brass screws** securing the **FL inverter board**.
2. Carefully rotate the **FL inverter board** out; from right to left then disconnect the **FL inverter cable** from **CN1** and the **HV cable** from **CN2**.
3. Remove **one M2.5x4 brass screw** securing the contrast board. **ON CDS MODELS ONLY!**
4. Disconnect the **contrast board cable** from PJ1 on the contrast board and lift out the board.
5. Remove **four M2.5x7 silver screws** securing the **LCD module** to the LCD cover.
6. Carefully rotate the **LCD module** from right to left of the **LCD cover**.
7. Disconnect the **LCD cable** from the **LCD module** and remove the LCD from the computer.

# TOSHIBA

**Tough Enough for Today's World.**