

IBM Network Station Family of Thin Clients
Access for today, flexibility for tomorrow



Network Station Manager V2R1 Windows NT Server Overview

November 1, 1999





NSM V2R1 Windows NT Overview Install

■ Install Highlights

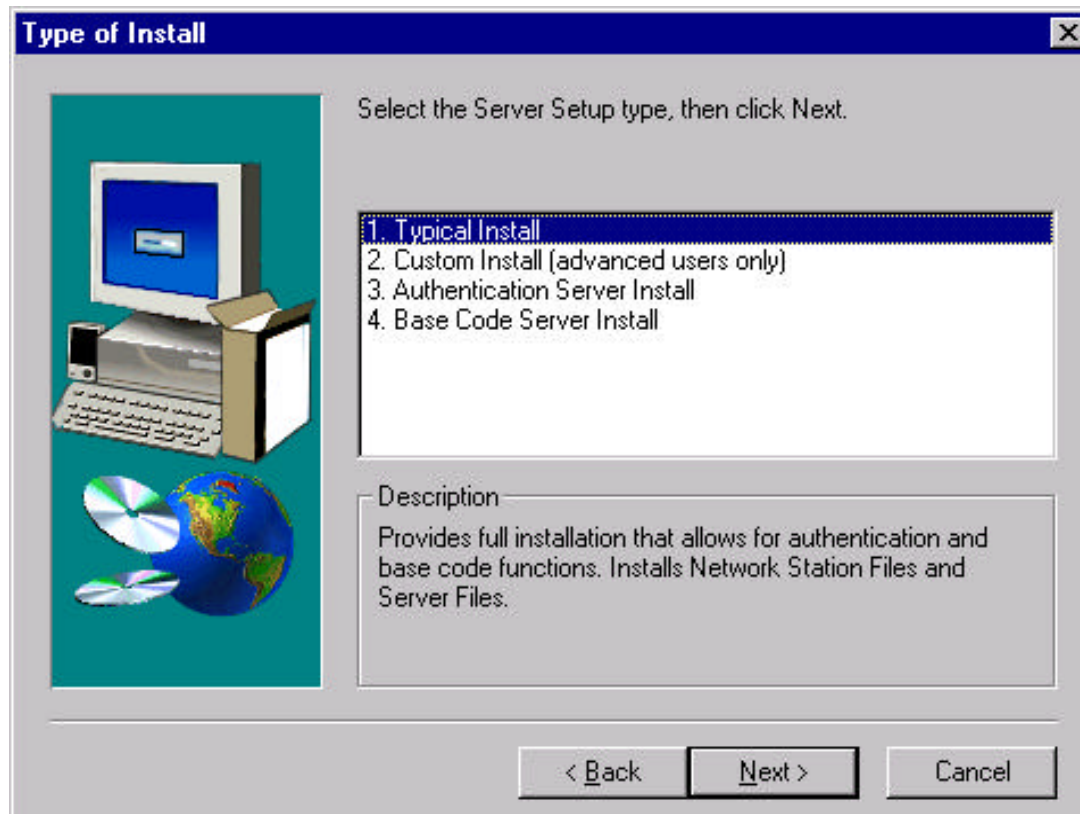
▶ Componentized Install

- Typical Install
- Authentication Server Install
- Base Code Server Install
- Custom Install
- Note:
 - *Typical Install will install Series 2xxx, 1000, and 300 client support*
 - *English is always installed, there is no client option for this language*
 - *Adding or removing components after an install will require a reinstall*



NSM V2R1 Windows NT Overview Install

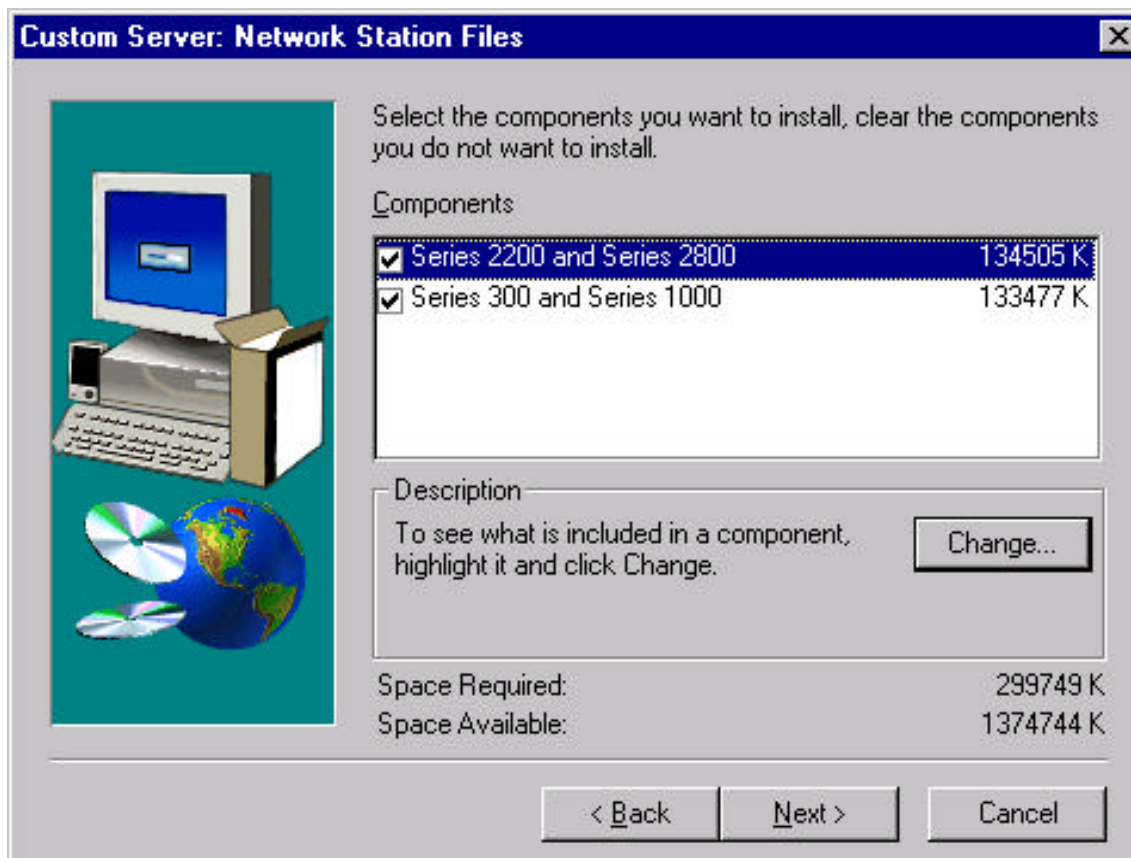
■ Install Highlights - Sample Install Screens





NSM V2R1 Windows NT Overview Install

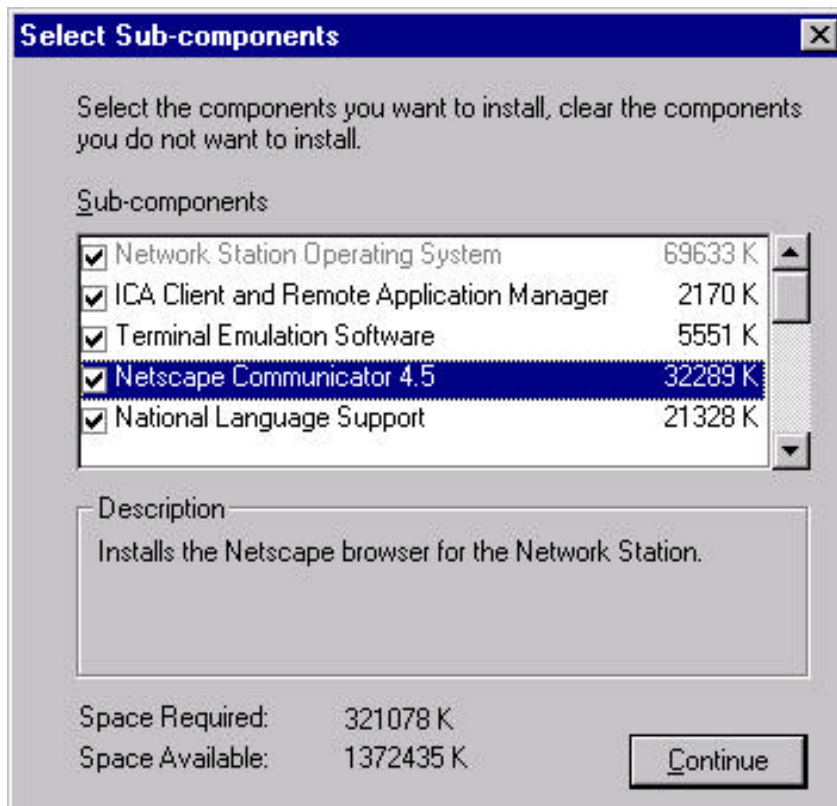
■ Install Highlights - Sample Install Screens





NSM V2R1 Windows NT Overview Install

■ Install Highlights - Sample Install Screens





NSM V2R1 Windows NT Overview Install

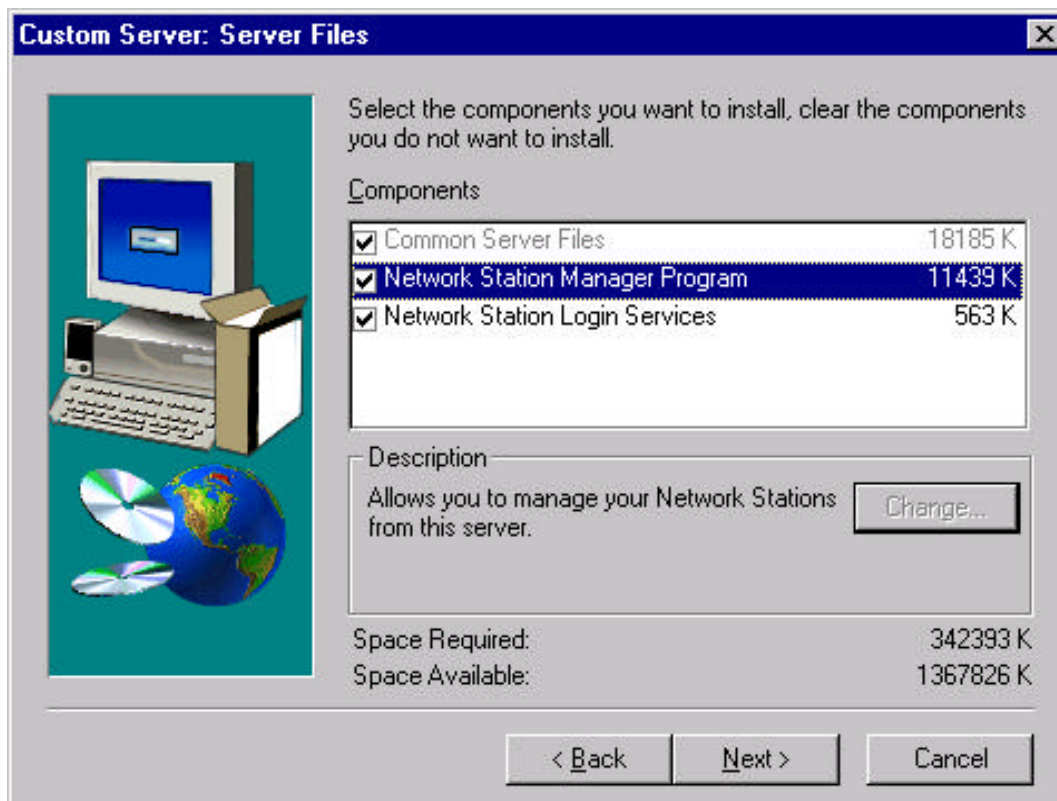
■ Install Highlights - Sample Install Screens





NSM V2R1 Windows NT Overview Install

■ Install Highlights - Sample Install Screens





NSM V2R1 Windows NT Overview

Install

■ Install Highlights (Continued)

▶ Product is shipped in three versions

- North American (128-bit encryption)
- International (40-bit encryption for client, 56-bit encryption for Lotus Web Server and server-side Netscape)
- French (40-bit encryption)

▶ North American Version

- Includes strong encryption for SSL, ICA, and Netscape components.
- Selected through a yes/no question during the North American CD install or can be installed later.

▶ Coexistence

- Both V2R1 and V1R3 can exist and run on the same system.
- Each product should install and uninstall cleanly and separately from the other.



NSM V2R1 Windows NT Overview

Install

■ Install Highlights (Continued)

► Migration from V1R3

- Migration can optionally be called during installation or run from a DOS command line after install using the nsmv2migr.exe program. The options for this utility are the same for all platforms.
- Can only be selected during a Typical Install or Authentication Server Install. Must be run manually for a Custom Install.
- When selected from install, it is an all or nothing process. All users are migrated, but no workstations. Migration will not affect V1R3 configuration files.
- Very flexible in being able to migrate in dual-server environment. Use the -p option and specify path to V1R3 \nstation directory. The source path can be a local drive, a remote server via a mapped drive, or even S/390 through a mapped drive via NFS client connection. Don't need the -p option if V1R3 is installed on the same server.
- In a dual-server migration, the set of users and groups must first be created on the Microsoft Windows NT server and placed in NSMAdmin and NSMUser groups appropriately (same as old V1R3 tool). It will not migrate user or group preferences if they are not already defined in Windows NT.



NSM V2R1 Windows NT Overview

Install

■ Install Highlights (Continued)

▶ More V1R3 Migration

- The client migration option (-c), is only valid for single-server migration, and the V1R3 install MUST be at the 3.08 level. It will cause ALL V1R3 NVRAM clients that boot to this server to be migrated to V2R1 on their next reboot.
- When migrating from an OS/390 or VM system, users will need to run a tool on the mainframe system to move files into a directory structure that is compatible with the Windows NT migration program.
- Messages are written to the Windows NT Application Event Log so they can be referenced later.

▶ UNIX Permissions of Client files

- Windows NT NSM Install must set NFS file permissions and symbolic links for files in the prodbase directory during install through an eNOD NFS API.
- This means that new client files in NetworkStationV2/ProdBase cannot be simply copied to the Windows NT server after install since they may not get the correct file permissions or have symbolic links set up correctly.



NSM V2R1 Windows NT Overview

NSM

- **Network Station Manager - Windows NT Unique Items**
 - ▶ **Requires Lotus Domino Go Web Server 4.6.2.2 or Microsoft IIS 4.0 Web server.**
 - ▶ **Web browser requirements are the same as AS/400**
 - Netscape 4.5 or higher
 - Microsoft Internet Explorer 4.01 (sp1) or higher
 - ▶ **Started with common NSM URL**
 - <http://nsmhost/networkstationv2/admin>
 - ▶ **Operates the same as the AS/400 version except for the basic authentication dialog box**
 - ▶ **NSM language is determined by the default regional setting of Windows NT at the time of product install**
 - This is the same as it was in V1R3
 - ▶ **Configuration files are now saved in the UTF-8 code page**



NSM V2R1 Windows NT Overview

NSM

■ Troubleshooting Tools

▶ Windows NT NSM Service Tool

- Run from a browser with the following URL
 - *http://nsmhost/NetworkStationV2/cgi/service.exe*
- Can also be run from a command line. The output is in HTML so the output should be redirected to a file and viewed with a browser. Example:
 - *ntnsmver > serviceinfo.html*
 - *netscape serviceinfo.html*
- Service tool has an extended output link for more details, but takes longer to run. This output may be needed in to analyze some problems.

▶ Event Viewer

- Messages from NSM and NSL are logged here in the Windows NT event log. This is a good place to look for problems that have occurred in the past.



NSM V2R1 Windows NT Overview

NSM

■ Troubleshooting Tools (continued)

▶ NFS Trace

- NFS Event trace can be started through the NFS configuration application.

▶ Lotus Domino Go Web Server

- Change service to allow it to interact with desktop. This will enable a diagnostic console which can display error messages. A trace of web server activity can also be started from here.

▶ Install

- If there is a problem setting NFS file permissions during install, an error message will direct the user to look for details in the file at:

x:\{float}\NetworkStationV2\NSM_NFS_Error.txt

This file will contain a list files and which type of error occurred during install. These errors are usually caused by build time errors and should not normally be seen.



NSM V2R1 Windows NT Overview

Service Updates

■ Service Update (PTF) Strategy

- ▶ **Service updates are currently planned to contain a complete product release and they will be cumulative (Service Update 2 will contain all of the changes from Service Update 1)**
- ▶ **Service updates can be installed stand-alone or on top of an existing V2R1 install**
- ▶ **Updates are obtained through web delivery and CDs**
- ▶ **Web delivery is done using Install Shield's Install from the Web product**
 - This will allow re-connectable connections to the image when the Internet connection is unreliable.
 - Users will need to do a small one-time download of the Install from the Web utility.
 - This NSM web image will be 200+ Mb in size and contains only eNOD and NSM components from the CD.



NSM V2R1 Windows NT Overview

Known Problems

■ Known Problems with GA Release

▶ Known problems

- DHCP must be manually installed if eNOD is already installed. The readme.txt file describes this procedure.
- The migration program nsmv2migr.exe command line help incorrectly states that the *all parameter is used to migrate everything (except clients). The correct options is -a.