

**NOTEBOOK COMPUTER**

**ROCKY II SERIES**

**USER'S GUIDE**

Copyright © 2001

All rights reserved. No part of this publication may be reproduced, transmitted, transcribed, stored in a retrieval system, or translated into any language, or computer language, in any form, or by any means, electronic, mechanical, magnetic, optical, chemical, or other, without the prior written permission of the manufacturer.

The manufacturer reserves the right to revise this publication and to make changes from time to time in the contents hereof without obligation to notify any person of such revision or changes.

The manufacturer makes no representations or warranties, either expressed or implied, with respect to the contents hereof and specifically disclaims any warranties as to merchantability or fitness for any particular purpose. Any of the manufacturer's software described in this manual is sold or licensed "as is". Should the programs prove defective following their purchase, the buyer (and not the manufacturer, its distributor, or its dealer), assumes the entire cost of all necessary servicing, repair and any incidental or consequential damages resulting from any defect in the software.

#### Trademark Acknowledgments

IBM, PC, AT, XT are registered trademarks of International Business Machines Corp.

MS-DOS and Windows are registered trademarks of Microsoft Corp.

Pentium is the registered trademark of Intel Corp.

All product and company names are trademarks or registered trademarks of their respective holders.

# Warranty

This warranty gives you specific legal rights. You may also have other right that may vary from state to state or country to country.

## One-Year Limited Warranty

The company warrants its computer hardware products against defects in materials and workmanship for a period of one year from delivery of the products. During the warranty period, the company reserves the right to either repair or replace products that prove to be defective.

### Warranty Exclusions:

The warranty on your computer shall not apply to defects resulting from:

1. Vibration, shock, drop, dust, rain, high/low temperature, fungus, etc. environmental exposure.
2. Improper or inadequate maintenance by the customer.
3. Improper site preparation and maintenance.
4. Unauthorized modification, change hardware configuration or misuse.
5. Customer supplied software or interfacing.
6. Operation outside of the specified ratings.

To maintain the warranty, you must have your computer serviced by an authorized repair depot in the country of original purchase. You must prepay all shipping charges, duties and taxes for products returned to your dealer.

### Warranty Limitations:

The warranty set forth above is exclusive and no other warranty, whether written or oral, is expressed or implied. Specifically disclaims the implied warranties of merchantability and fitness for a particular purpose.

Some states or countries do not allow limitations on how long an implied warranty lasts, so the limitation or exclusion in the previous section may not apply to you. Any implied warranty of merchantability or fitness is limited to the one-year duration of this written warranty.

### Extended Warranty:

Please consult your dealer for details.

# **EMC Notice**

## **FCC**

### **Warning!**

This equipment generates, uses, and can radiate radio frequency energy and if not installed and used in accordance with the instructions, may cause interference to radio communications. This equipment has been tested and found to comply with Class B digital devices, pursuant to Part 15 of the FCC rules that are designed to provide reasonable protection against such interference when operated in a commercial or residential environment.

### **Countermeasures if interference occurs**

You are encouraged to do the following if interference occurs while you are operating the computer:

1. Turn OFF the computer and unplug the AC adapter from the outlet to see if the interference disappears.
2. Connect the AC adapter to the outlet in another room and check if the interference still exists.
3. Use an outlet that is far away from the interfered appliance.
4. Re-orient your computer in respect to the interfered appliance to see if there is improvement.

If all of these failed, please call your dealer for help.

## **CE**

This equipment complies with the requirements set out in the Council Directive on the Approximation of the laws of the Member States relating to Electromagnetic Compatibility (89/336/EEC). For the evaluation regarding the electromagnetic compatibility, the following standards were applied:

EMI: EN55022 (CISPR 22) class B (conduction and radiation)

EMS EN55024

Harmonics: EN61000-3-2

Flicker: EN61000-3-3

ESD: EN61000-4-2

RS: EN61000-4-3

EFT: EN61000-4-4

Surge: EN61000-4-5

CS: EN61000-4-6

Power-Frequency Magnetic Field: EN61000-4-8

Voltage Dips, Interruptions: EN61000-4-11

## **UL, TÜV**

AC Adapter (TÜV includes EN60950 LVD)

## **Power Conservation**

This computer consumes much less power than conventional computers. However, you still can reduce power consumption by properly configuring the Power Management Setups.

It is recommended that you enable the power saving functions even when you are not running with the battery.

Power Management generally does not degrade the system performance while saving power.

Please read the power saving features and the setting procedures described in this manual before setting your computer.

## **Recycling**

All materials of the computer are recyclable or environmentally friendly. No CFC or related materials were used in the manufacturing process or inside the product.

Please recycle the packing materials, and at the end of the computer's life, all other materials in accordance with the local regulations.

Please refer “Material and Recycling” for the contents of the materials.

# CONTENTS

<b>GETTING STARTED.....</b>	<b>1</b>
UNPACKING .....	1
QUICK OPERATION.....	2
CONTROLS AND INDICATORS.....	3
<b>USEFUL INFORMATION.....</b>	<b>7</b>
LOCATION.....	7
RUGGEDNESS .....	7
OPERATING SYSTEMS.....	8
AC ADAPTER.....	8
BATTERY.....	9
BOOT UP AND POST.....	10
SUSPEND/RESUME.....	11
SHUTDOWN .....	11
RTC .....	11
REPLACING MODULES.....	12
<b>COMPONENTS AND FUNCTIONS .....</b>	<b>13</b>
KEYBOARD.....	13
FLOPPY DISK DRIVE.....	14
PRINTER CABLE.....	14
HARD DISK DRIVE .....	15
CD-ROM DRIVE .....	15
IRDA TRANSCEIVER.....	16
PCMCIA CARDS.....	16
DOCKUNDER (OPTIONAL) .....	16
<b>OPTIONAL DEVICES .....</b>	<b>20</b>
MEMORY CARD .....	20
2 <sup>ND</sup> BATTERY .....	20

FAX/MODEM CARD .....	20
LAN CARD .....	20
DVD ROM DRIVE .....	20
CD-RW DRIVE .....	20
2 <sup>ND</sup> HDD .....	20
TOUCH SCREEN .....	20
PCMCIA COVER .....	21
VEHICLE ADAPTER .....	21
DUAL BATTERY CHARGER .....	21
DOCKUNDER .....	21
<b>SPECIFICATIONS .....</b>	<b>22</b>
CPU .....	22
MEMORY .....	22
DISPLAY .....	22
KEYBOARD .....	23
FLOPPY DISK DRIVE .....	23
HARD DISK DRIVE .....	23
CD-ROM DRIVE .....	23
TOUCH SCREEN .....	23
I/O PORTS .....	24
AC ADAPTER .....	24
VEHICLE ADAPTER .....	24
BATTERY .....	25
SYSTEM UNIT DIMENSIONS AND WEIGHT .....	25
MATERIALS AND RECYCLING .....	25
ENVIRONMENTAL .....	26
<b>BIOS SETUP .....</b>	<b>27</b>
MAIN .....	27
ADVANCED .....	28
ADVANCED BIOS FEATURES .....	28
INTEGRATED PERIPHERALS .....	29



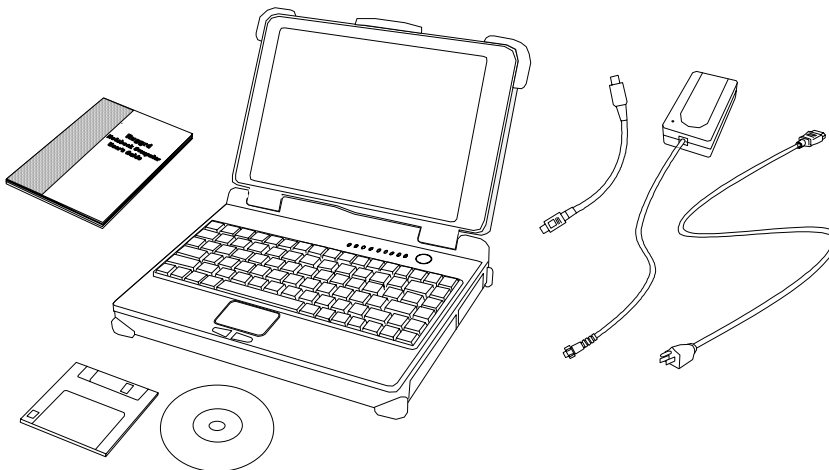
POWER MANAGEMENT .....	29
PNP/PCI CONFIGURATIONS .....	32
DEFAULTS.....	32
SECURITY .....	33
EXIT .....	33
<b>UTILITIES AND DRIVERS .....</b>	<b>35</b>
VGA UTILITY.....	35
DISPLAY CAPABILITY .....	35
MOUSE DRIVER .....	36
TOUCH SCREEN DRIVER.....	36
CD-ROM DRIVER .....	36
PCMCIA DRIVER .....	36
AUDIO DRIVER.....	37
LAN CARD DRIVER .....	37
FAX/MODEM CARD DRIVER.....	37
<b>MAINTENANCE / SERVICE .....</b>	<b>38</b>
CLEANING.....	38
TROUBLESHOOTING.....	38
RMA SERVICE .....	38

## GETTING STARTED

### Unpacking

The following components come with your computer. If anything is missing or damaged please notify the dealer immediately.

- Computer unit
- Removable FDD or CD-ROM (one of them is installed on computer and the other as accessory)
- AC Adapter
- AC Power Cord
- Utility Diskettes or CD
- User's Guide
- External Keyboard Adapter Cable
- Printer adapter cable
- Carrying Bag



### Quick Operation

- Turn loose the battery screw to remove the battery insulation sheet then fix the battery again.
- Attach the AC adapter to charge battery for at least 10 minutes.
- Turn ON the computer by pressing the power switch momentarily.
- Turn OFF the computer by either of the following:
  1. Press power switch for 4 seconds makes a “Hard” power off. System shut down immediately without saving any data or parameters.
  2. Press power switch momentarily causes “Suspend”\* or “Hibernate”\* dependent on operating system (OS) and power management settings.

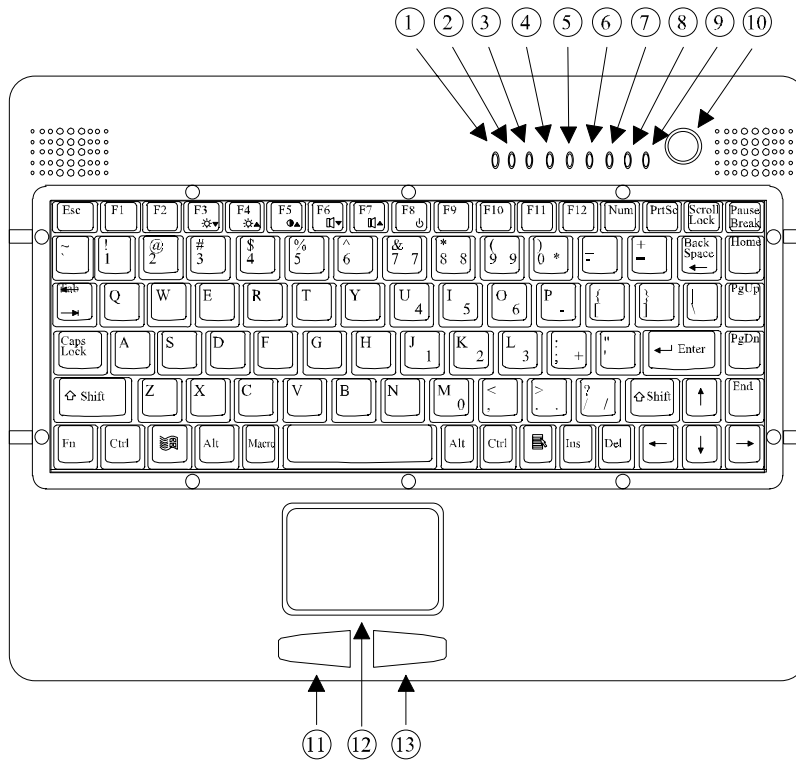
*\*: Some operating systems may not support these functions.*

3. Click **Start** → **Shut Down** in Windows to turn OFF.

Driver or application software installation may be necessary for further operation.

## Controls and Indicators

### Controls and Indicators (Upper)

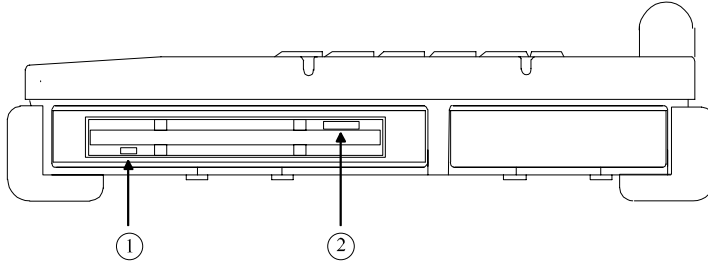


1. IrDA
2. PCMCIA
3. KB Number Lock
4. KB Caps Lock
5. KB Scroll Lock
6. HDD in use
7. Secondary Battery Charge
8. Primary Battery Charge
9. Power indicator
10. Power switch
11. Touch pad left button

- 12. Touch pad
- 13. Touch pad right button

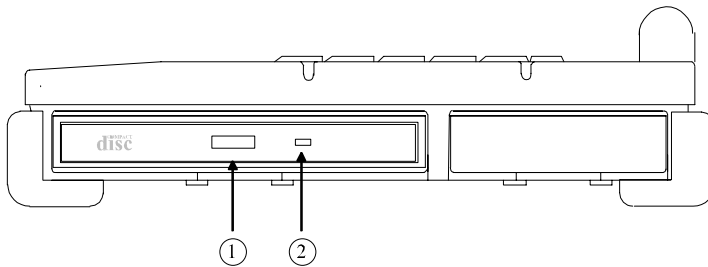
**Controls and Indicators (Right)**

**FDD Configuration:**



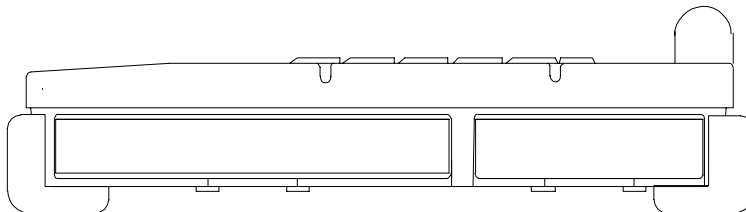
- 1. FDD in use
- 2. Diskette eject button

**CD-ROM Drive Configuration:**



- 1. CD-ROM eject button
- 2. CD-ROM in use

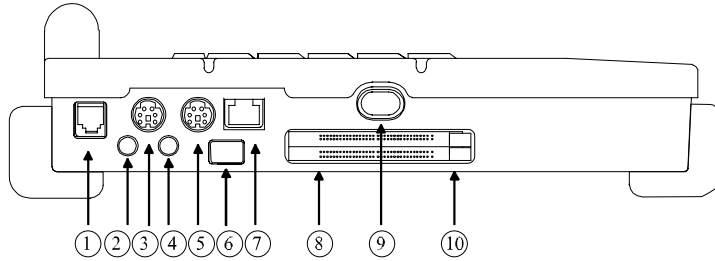
**Battery Configuration: (optional)**



No special control and indicator.

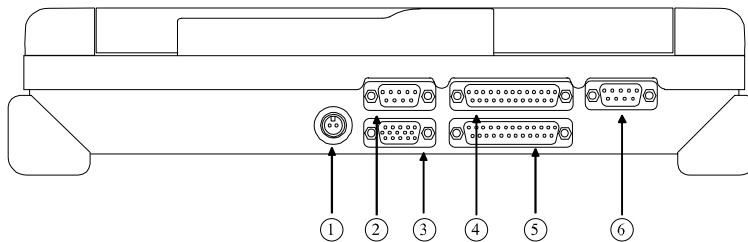
---

**Controls and Indicators (Left)**



1. Phone Jack
2. External Speaker
3. External Keyboard
4. Microphone
5. External PS/2
6. USB
7. LAN Jack
8. PCMCIA slots
9. IrDA
10. PCMCIA card eject button

**External Device Connectors (Rear)**



1. DC Power Jack
2. Serial Port COM1
3. External CRT Monitor Port
4. Docking Port
5. Printer/External FDD Port\*
- 6.

6. Serial Port COM2 (or COM3 by optional configuration)

*\*: The port is a dual function port and default as printer output. System will detect which device is attached and switch to proper output automatically. Hot swap is possible under most conditions. However, if not able to hot swap, please re-boot computer with the new device attached.*

## USEFUL INFORMATION

### Location

A clean and moisture-free environment is preferred. Make room for air circulation. Avoid areas with:

- Sudden or extreme changes in temperature.
- Extreme heat.
- Strong electromagnetic fields (near television set, motor rotation area, etc.).
- Dust or high humidity.

However, if it is necessary to work in a hostile environment, please regularly maintain your computer by cleaning dust, water, etc. to keep it under optimal condition.

### Ruggedness

The computer is designed with rugged features such as vibration, shock, dust, and rain/water protection. However, there is **NO WARRANTY** for such features. Please provide appropriate protection while operating in harsh environments.

The computer designed to withstand rainfall from top with mild wind blowing only. Please keep the keyboard facing up, i.e., normal operating direction, to maintain water resistance. **NEVER** immerse the computer into water or spray water with the system up side down. It may cause permanent damage.

The D-sub connector caps on the rear of the computer are for dust and shock protection. The connectors are sealed internally. Other I/O ports and devices on the left or right must have caps tightly closed or cable inlets sealed while exposed to water or dust.

There are optional gaskets for DB-9 and DB-25 connectors. You may install them to improve rain/dust/moisture resistance on your commercial type cable. Insert the packing into the male connector (with pins) and fasten the screws.

All connectors will corrupt if exposed to water or moisture. They corrupt even faster if the power is ON. Please take proper water-resistant measures for cable connections.

The DC jack and cable are sealed which may operate with water splashing while attached. All rubber caps should be closed when there is no cable attached.



## Operating Systems

The computer is compatible with most operating systems (OS). However, not all functions are 100% compatible.

For example, ACPI, APM, Smart Battery, etc. are not available on DOS, Windows NT, and other non-Microsoft OS. Consequently “Suspend”, “Hibernation”, “Battery Gauge” etc. would not work under such operating systems.

*ACPI: Advanced Configurations and Power Interface*

*APM: Advanced Power Management*

## AC adapter

The AC adapter performs two functions:

- It powers the computer from an external AC source.
- It charges the computer battery.

The adapter automatically detects the AC line voltage (110V or 220V) and adjusts accordingly.

The following are recommended when using the AC adapter:

- Use a properly grounded AC outlet.
- Use one AC outlet exclusively for the computer. Having other appliances on the same line may cause interference.
- Use a power strip with built-in surge protection.

Connect the AC adapter:

1. Plug the AC cord to the adapter.
2. Plug the other end of the AC cord into the wall outlet. Make sure the green LED on the adapter turns on.
3. Attach the DC plug into the power jack of the computer; turn the lock ring clockwise to secure it.

## AC Adapter Indicator

The green LED indicates that the AC power is ready.

## **Battery**

The computer will automatically switch to the battery power when the AC adapter is disconnected.

### **Battery Power Saving Tips**

The computer comes with an intelligent power-saving feature. You may extend the battery life by:

- Setup power saving functions in BIOS Power Management Setup.
- Setup power saving functions in Operating System Power Management options (e.g. Windows 98/2000/ME Power Management Options).
- Lower the intensity of the display by brightness control.
- Suspend the computer when temporarily leave the work.
- Shut down the computer when leave the work for a longer time.

### **Battery Low**

When the battery is nearly exhausted, the computer gives the following “Battery Low” warnings:

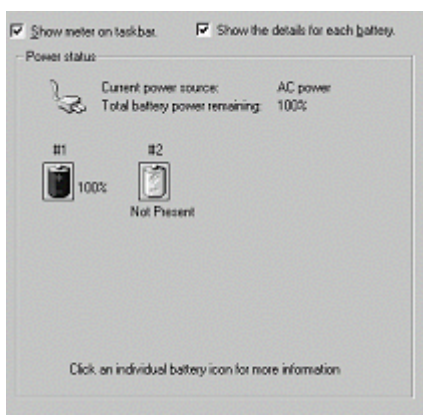
- Windows 98/2000/ME battery low warning (when operating system is Windows)
- A series of beeps per minute.
- The power LED flashes.

Once the Battery Low warning occurs, please:

1. Save and close the files you are currently working on.
2. Plug in the AC adapter to recharge the battery.

### **Battery Gauge**

In Windows 98/2000/ME, etc. you may get battery status information from battery gauge. Click the power/battery icon then the battery gauge screen pops out.



*Note: Battery characteristic varies depending on factors such as ambient temperature, charging method, load current, aging, etc.  
For example, at low temperature the chemicals of the battery are more inactive, thus decreases the output power.  
The battery gauge can only be taken as a reference. Please do not expect it to show the exact amount of the power remaining.  
There is no memory effect on Lithium Ion battery cells. However, discharge the battery to nearly empty every 2~3 months would help the internal gauge to reset its readings.*

### **Charging the Battery**

Plug in AC adapter starts the battery charge. If the battery is already full, the sense circuitry will stop high current charge within several minutes.

There are two LED indicators next to power indicator for Primary and Secondary battery respectively. Indicator turns ON when the battery is charging. They will turn OFF when the battery charge is completed.

To charge the Secondary Battery, simply install it into the computer and attach the AC adapter. The internal charger will charge the Primary and Secondary batteries at the same time.

Optional Dual Battery Charger can charge Primary and Secondary batteries externally.

### **Boot Up and POST**

The computer turns ON and loads the operating system (such as Windows) into the system memory. This start-up procedure is called "boot up".

### **The ROM BIOS Power On Self Test (POST)**

Each time the computer powers on, it automatically performs a self-test of its memory and hardware devices.

### **Suspend/Resume**

The system can enter suspend mode by either pressing the power switch or staying idle till Suspend Timeout. Windows “Suspend”, ”Standby” can also activate the function.

Please refer “**BIOS Setup Power Management**“ for details.

*Note: Suspend/Resume works under both AC adapter and battery mode.  
“Hibernate” may not work under Windows NT or other non-Windows operating systems.*

### **Shutdown**

The following procedure is recommended in shutting down the computer:

1. Save any work you want to keep into the disk.
2. Make sure none of the disk drives are active (HDD, FDD, and CD-ROM drive).
3. Remove any diskette from the FDD.
4. Proceed the shut down procedure of your Operating System
5. Let the computer shut down or push the Power Switch to turn OFF.

Failure to shut down the computer properly may result in loss of data or hardware damages.

Automatic shut down is activated at battery exhaust. Be sure to finish your work and save all your data when the battery low warning appears.

### **RTC**

Battery backed up RTC (Real Time Clock/Calendar) is built in an on-board CMOS (Complementary Metal Oxide Semiconductor) chip. The RTC keeps track of the time and date while the computer is off. The CMOS chip also stores system setup information.

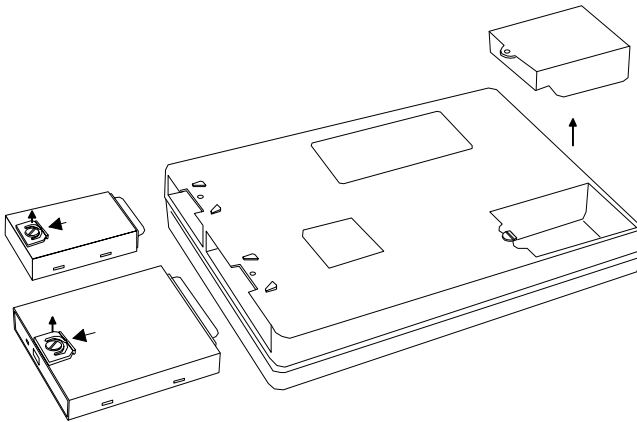
RTC battery is also recharged when AC adapter is attached. Recharge the computer approximately once per month to ensure RTC operation.

## Replacing Modules

*Caution! You must turn the power OFF before replacing the FDD, CD-ROM, and HDD modules.*

To remove the modules:

1. Turn OFF the computer or hibernate (suspend to disk).
2. Disconnect all cables from the computer.
3. Use a coin to turn loose the screws on the modules.
4. Remove the battery from the compartment.
5. Push the latch knob to release the CD-ROM or HDD module and push them outward.
6. Remove the module from the computer.



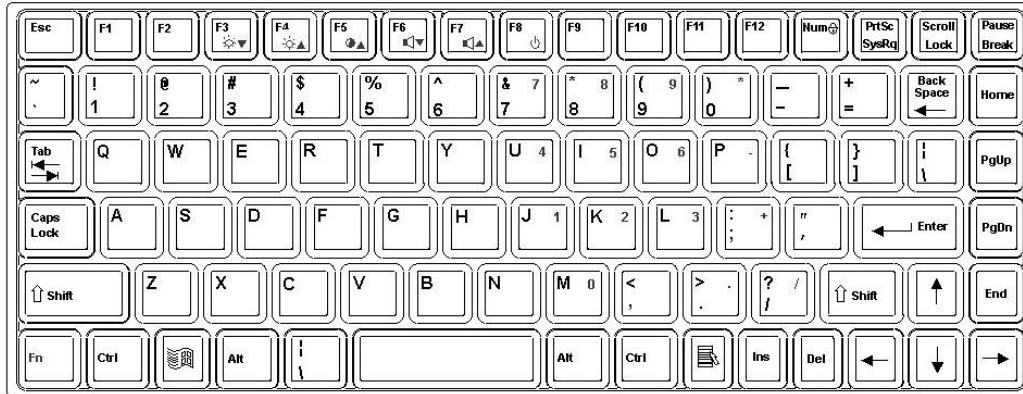
To re-install the modules:

Gently push the module into the slot. Fasten the screw to fix the module.

## COMPONENTS AND FUNCTIONS

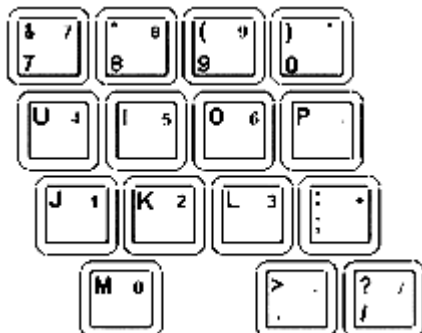
### Keyboard

The keyboard is functionally equivalent to a full size desktop keyboard. A sample key layout is shown below.



### The Numeric Keypad

The numeric keypad functions like an electronic calculator. It is embedded in the main keyboard, with the numeric figures printed on the upper right of their respective keys. The keypad has keys for the digits 0 through 9, the decimal point (.), addition (+), subtraction (-), multiplication (\*), and division (/).



To activate the keypad, press the Num Lock key. The 15 keys shown in the figure switch from alphabetic keys to numeric keys. Press Num Lock again switches the keys back to alphabetic.

### **Keyboard Backlight (optional)**

Press **[Fn] [F5]** key for approximately 1 second turns keyboard backlight ON or OFF.

### **Floppy Disk Drive**

The computer comes with a 3.5" 1.44MB floppy disk drive (FDD). The 1.44MB FDD can also read and write 720KB double side double density diskette. It is recommended that high density (2HD marking) diskette been used only.

FDD can be removed and swapped with CD-ROM drive or 2<sup>nd</sup> battery. When CD-ROM drive or 2<sup>nd</sup> battery is installed, you may still use FDD by connecting it via the rear DB-25 port.

### **LS-120 Drive (optional)**

LS-120 drive plugs to the same connector of FDD/CD-ROM drive. It cannot attach to the rear Printer/FDD connector. LS-120 interface is via IDE so there is no connector for external connection. It must be installed in the FDD/CD-ROM/2<sup>nd</sup> Battery compartment only.

No device driver needed under Window 98/2000/ME. Driver loading is necessary when working under non-Windows OS.

To boot up from LS-120 drive you should set boot sequence as "LS-120, C" in "Advanced BIOS Feature".

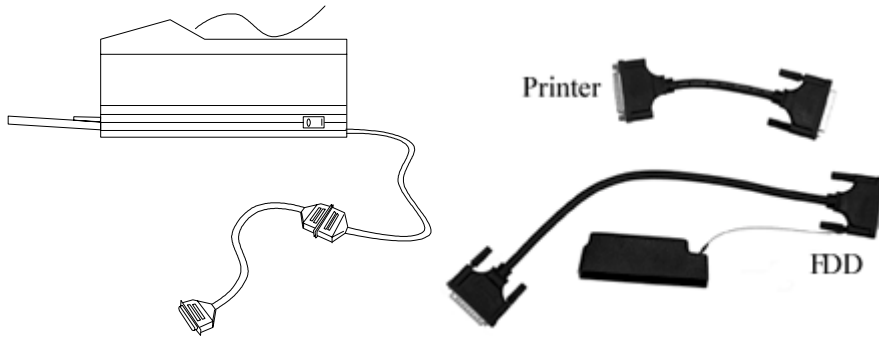
For first time use, the computer will recognize LS-120 as a conventional 1.44MB FDD and boot up normally. Then you may install Windows or load driver for DOS depending on your needs.

The diskette for LS120 is either 1.44MB or Super Disk 120MB.

Diskette eject is controlled by electric motor mechanism. Insert/Remove diskette when the power is ON.

### **Printer Cable**

For most printers there is no special requirement in connection. However, some printer cable does not contain all 25 wires. To avoid malfunction, the printer adapter cable comes with your computer should be attached to the printer cable. The purpose is to re-connect all the ground pins. Devices equivalent to printer such as scanner, Laplink cable, etc. also need this cable.



Please note FDD cable is different from printer adapter cable.

### Hard Disk Drive

The Hard Disk Drive (HDD) is a 2.5" type standard IDE interface data storage device.

HDD and FDD, CD-ROM drives are removable. This provides convenience and security. They can ONLY be removed while the power is OFF.

*Note: NEVER drop your HDD, FDD, CD-ROM module or expose them to high temperature, high humidity, or any hazardous environment. NEVER try to disassemble the module.  
Static discharge may destroy your device and data. Always pick up the modules by touching the case only.*

### CD-ROM Drive

The CD-ROM drive is a standard IDE ATAPI type, which accepts a variety of standard 12cm CDs such as CD-ROM, audio CD, CD-I, Photo CD, video CD, etc.

The following procedure assumes that all the necessary CD-ROM utilities were installed on the computer. For CD-ROM utility installation, please refer "Utilities and Drivers".

#### Put CD into CD-ROM drive

While the power is ON, push the CD-ROM drive's eject button. The tray will release. Then gently pull the tray out. Put the CD on the holder and push the tray back into the cabinet. Any dirt on the data side of the CD may cause read error. Please do not touch this side when handling CDs.



### **Read from CD-ROM drive**

The CD-ROM drive may be designated as drive D: or higher depending on your configuration. You may access it in DOS or Windows the same way you would for the floppy disk drive or hard disk drive. The CD-ROM is a read-only device. Any command attempting to write onto it will be denied.

Please avoid shock or vibration while the CD-ROM drive is active.

### **IrDA Transceiver**

You may transfer or receive data to and from another computer via infrared ray if that computer is also equipped with an IrDA transceiver. Please make sure the linking utility is IrDA compliant.

Define the port and controller type before running linking utility. The port is "COM2" and the I/O controller is SMC37C869LV.

Set COM2 port as "IR" in **Integrated Peripherals** of **BIOS Setup** to enable it.

<i>IrDA: Infrared Data Association</i>
--

### **PCMCIA Cards**

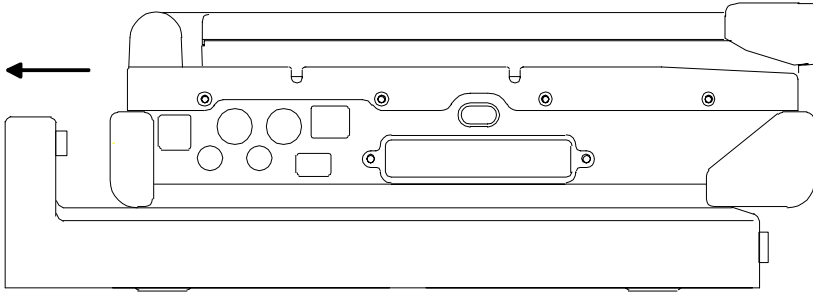
The computer supports two type-II PCMCIA cards or one type-III card. To remove the card, push the button on the right of the card to eject it. The eject button can hide into the compartment by pushing it inward gently.

### **DockUnder (optional)**

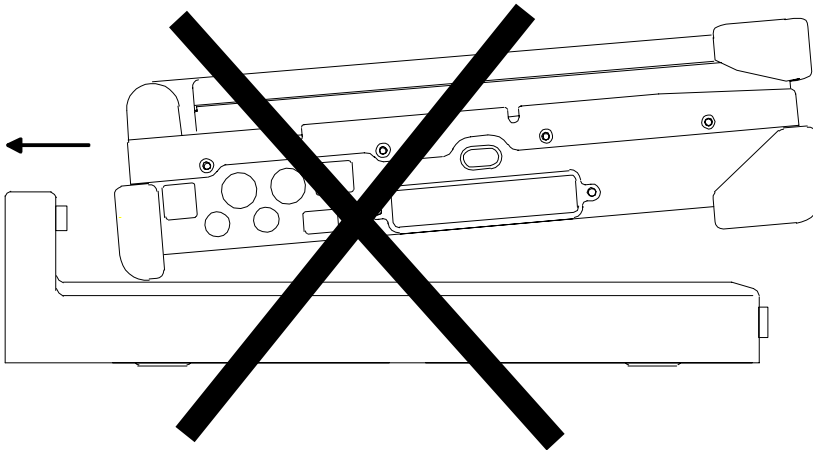
DockUnder is the device for system unit docking. The AC adapter or vehicle adapter can attach to DockUnder and automatically charge the computer while docked.

#### **Mount the DockUnder:**

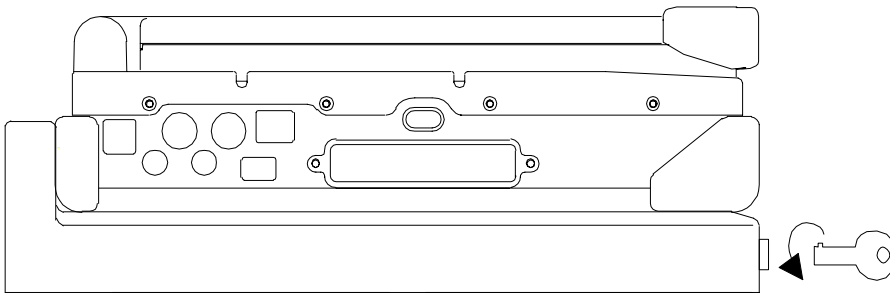
1. Turn OFF the power.
2. Open the rubber cap of the docking connector.
3. Align the docking connector.
4. Push the computer to join the guiding pins. Do not lift the computer up while docking.



*Note: Do not lift up the computer while engaging.*



5. Lock the computer.



There is 1 PCI slot on the DockUnder-Office. Maximum card dimensions is 260mm (L: length, including L-bracket thickness) x 115mm (W: width, including gold fingers) x 24 mm (H: height, including PCB 1.6mm, components side 17mm, solder side 5mm). The maximum power rating of PCI card is +5V 1A, +3.3V 1A, +12V 100mA, -12V 100mA.

To install expansion card in DockUnder-Office:

1. Unplug the AC adapter.
2. Release and remove the computer.
3. Remove the screws fixing the upper and lower covers of the DockUnder.
  1. Open the upper cover.
  2. Install the expansion card into the slot and fix the L-bracket.
  3. Assemble the upper cover.
4. Attach the computer and perform functions test.

*Note: You may have to free IRQ for your expansion card by disabling unused device in **BIOS Setup "Integrated Peripherals"**. Please check IRQ conflict before installing cards and drivers. Never dock or un-dock the computer while power is ON.*

	IRQ	DMA	
0	Timer output 0	0	Sound
1	KB	1	Sound
2	8 RTC	2	FDD
	9 ACPI (or Free)	3	Reserved (or ECP/EPP)
	10 Free (16-bit PCMCIA, or COM3*)		
	11 PCI devices or Card Bus 0/1 (Sound, LAN*, 32-bit PCMCIA, etc.)		
	12 Touch pad (PS/2 mouse)		
	13 Co-processor		
	14 HDD		
	15 CD-ROM drive		
3	COM2 (or Fax/Modem*, IrDA)		
4	COM1 (or Touch screen)		
5	Free (COM4*)		
6	FDD		
7	Parallel port 1		

---

\*: Optional devices.

## OPTIONAL DEVICES

### Memory Card

The memory card will expand your memory to facilitate better system performance. The cards are available as following:

32MB, 64MB, 128MB

### 2<sup>nd</sup> Battery

A Lithium Ion rechargeable 2<sup>nd</sup> battery may install into the CD-ROM/FDD compartment. It has the same capacity of primary battery and Smart Battery compliance.

The computer's internal charger can detect 2<sup>nd</sup> battery and perform charging accordingly.

### Fax/Modem Card

V.90 56K Fax/Modem card.

### LAN Card

100 Base-T Ethernet LAN card for a wired network.

### DVD ROM Drive

Swappable with CD-ROM drive for DVD playback. Backward compatible with CD-ROM, VCD, etc.

### CD-RW Drive

Swappable with CD-ROM drive for writing CD-R. Backward compatible with CD-ROM, VCD, etc.

### 2<sup>nd</sup> HDD

Swappable with CD-ROM drive. Set as IDE secondary master drive.

### Touch Screen

Capacitive or resistive touch screen facilitates direct finger touch or pen input instead of mouse or touch pad.

*Capacitive touch screen needs a ground loop between human body and screen panel's ground terminal. Otherwise it would not activate when touched with one hand. It is generally OK if the AC adapter is attached or the computer/panel is mounted on a vehicle's metal parts. Holding the computer/panel with the other hand will form the loop, too.*

### **PCMCIA Cover**

Besides the attached PCMCIA rubber cover, there is an optional cover with a metal frame that can be fixed by screws. The cover provides protection from dust or water for cabled PCMCIA cards. Users may glue the cable outlet to seal it.

### **Vehicle Adapter**

Converts power from car lighters or truck batteries to DC +19V, the same output ratings as AC adapters. It can power the system and charge the batteries simultaneously.

*Remove or disconnect the adapter when leaving the vehicle to avoid battery exhaustion.*

### **Dual Battery Charger**

This charger provides two slots for the Primary and Secondary battery respectively. It allows charging of both batteries simultaneously. Accepts power from AC adapter or Vehicle adapter. It takes approximately 3 hours to fully charge both batteries.

### **DockUnder**

There are 2 DockUnder models available. One for office installation and one for vehicle installation:

DockUnder-Office accepts 1 PCI card and duplicates COM1, COM2, Parallel, 2 USB, and PS/2 port. Ports are on the rear.

DockUnder-Vehicle duplicates COM1, COM2, Parallel, 2 USB, and PS/2 port. Ports are on the bottom.

## SPECIFICATIONS

### CPU

Intel Mobile Pentium III

CPU runs at 2 speeds: High speed (AC adapter mode), Low speed (Battery mode)  
The CPU speed switches automatically.

### Memory

**System memory** Minimum: 64MB  
Expandable: 128MB, 192MB, 256MB, 384MB, 512MB

**Cache memory** Internal level-1 32KB, level-2 256 KB

**Video memory** 8MB

### Display

The display is a SVGA compatible LCD (Liquid Crystal Display) of 800 x 600 dots (horizontal x vertical) or 1024 x 768 dots with 16M true color. The computer is also capable of displaying Super XGA 1280 x 1024 dots full screen on external CRT monitor (Cathode Ray Tube).

LCD applies a "Panning" technique to display resolutions higher than 800 x 600 or 1024 x 768 dots. In Panning, you may move the cursor out of the screen boundary, then the display will scroll to show the hidden area.

### LCD:

Type:	12.1" Active TFT Color 13.3" Active TFT Color
Resolution:	800 x 600 pixels (12.1") 1024 x 768 pixels (13.3")
Mode:	VGA, EGA, MGA, SVGA, and XGA
Color:	16.8 million true colors on 800 x 600 and 1024 x 768 mode
Characters x Row:	80 x 25

### **Keyboard**

Number of keys:	89
Key travel:	2.5 mm (standard) 1.5 mm (optional backlight)
Function:	Emulates standard 101/102-key keyboard

### **Floppy Disk Drive**

Standard:	
Size:	3.5"
Capacity:	1.44MB (formatted)
Rotation:	300 RPM
Transfer Rate:	500KB/sec
Average Access:	94 ms (with settling)

### **Hard Disk Drive**

Type:	2.5"
Interface:	IDE Ultra DMA 33 compliant

### **CD-ROM Drive**

Speed:	24 x
Interface:	(ATAPI)
Data transfer rate:	16.7MB/sec
Modes:	CD-ROM mode 1 & 2, CD-Audio, VCD, Multi-session Photo CD
Dimensions:	128mm (W) x 130mm (D) x 12.7mm (H)
Weight:	280g

### **Touch screen**

Type:	Capacitive or Resistive
Interface:	Serial
Resolution:	>1024x1024



## **I/O ports**

- Parallel port
- Two Serial ports
- External CRT monitor port
- External Keyboard port
- External PS/2 port
- Audio ports (External Speaker, Microphone)
- RJ11 Phone jack for internal Fax/Modem (optional)
- RJ45 jack for internal LAN card (optional)
- 2 type II or 1 type-III PCMCIA slots
- Printer/External FDD port
- Docking port
- USB port (Universal Serial Bus)

## **AC Adapter**

Voltage:	AC 90 - 240 V
Frequency:	50/60 Hz
Output Voltage:	DC 19V
Maximum Power:	60 Watts
Dimension:	122 mm(W) x 55mm(D) x 29mm(H)
Weight:	240 g (0.52 lb.)

## **Vehicle Adapter**

Input Voltage	12V/24V (10~32V) Auto-sense
Input Current	2.5A/5.5A max. (12V/24V respectively)
Output Voltage	19V +/-5%
Output Current	2.8A
Wiring	Cigarette lighter/ Truck battery

---

Application                      Car or Truck installation

**Battery**

**Primary Battery:**

Type:                                9 x 18650 cells Lithium Ion  
Capacity:                          10.8V 5400mAH  
Dimension:                        103 mm(W) x 73 mm(D) x 38 mm(H)  
Weight:                             435 g (0.95 lb.)

**2<sup>nd</sup> Battery (optional):**

Type:                                9 x 18650 cells Lithium Ion  
Capacity:                          10.8V 5400mAH  
Dimension:                        150 mm(W) x 90 mm(D) x 20 mm(H)  
Weight:                             560 g (1.2 lb.)

**System Unit Dimensions and Weight**

Width:                              312mm (12.3")  
Depth:                              246mm (9.7")  
Height:                             62.5mm (2.5" )  
Weight :                            4.7Kg (10.3 lb., including FDD and primary battery)

*Note: Weight varies depending on system configurations.*

**Materials and Recycling**

Materials of the computer are as follows:

- Cabinet: Aluminum alloy ADC-12 or A380,  
Magnesium alloy AZ91D,  
UL grade PC+ABS GE C6200 or TN-3813BW
- Bracket: Aluminum 5052, Steel with Nickel plating, or Stainless Steel  
S304
- PCB: FR-4, UL 94V0
- Battery: Rechargeable Lithium Ion, 9 cells per pack

Packing: Carton: Unbleached paper  
Cushion: Recyclable PE  
Carrying bag: Recyclable PE Fiber  
User's Guide: Paper

Please recycle the parts according to local regulations.

### **Environmental**

Temperature: 0 ~ 45°C (32 ~ 113°F) operating  
-20 ~ 60°C (-4 ~ 140°F) storage

Humidity: 5~95% Non-condensing operating  
95% maximum storage

Altitude: 0 ~ 4570 meters (0 ~ 40,000 feet) operating

## BIOS SETUP

Press **[Del]** at boot up to enter BIOS setup. Use arrow keys to select options and **[PgUp]** **[PgDn]** to modify them. When finished, move to "Save & Exit Setup" and press **[Enter]** then press "Y".

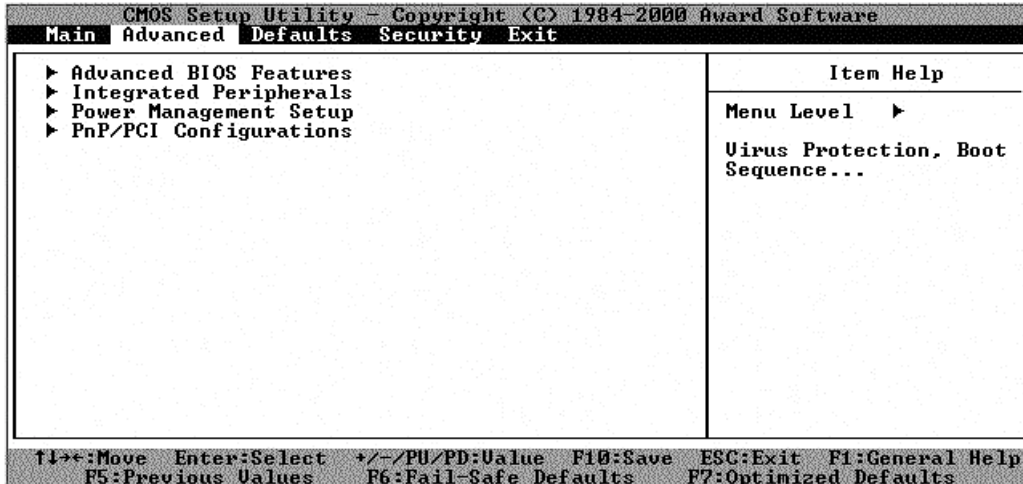
### Main

CMOS Setup Utility - Copyright (C) 1984-2000 Award Software		
Main <b>Advanced Defaults Security Exit</b>		
Date <mm:dd:yy>	Wed, Jan 3 2001	Item Help
Time <hh:mm:ss>	16 : 57 : 53	Menu Level ▶
▶ IDE Primary Master		Change the day, month, year and century
▶ IDE Secondary Master		
Drive A	[1.44M, 3.5 in.]	
LCD&CRT	[Both]	
Base Memory	640K	
Extended Memory	1024K	
Total Memory	2048K	
↑↓:Move Enter:Select +/-/PU/PD:Value F10:Save ESC:Exit F1:General Help F5:Previous Values F6:Fail-Safe Defaults F7:Optimized Defaults		

You may set time, date, HDD, FDD parameters in Main Setup. Set IDE Primary Master (HDD) and IDE Secondary Master (other IDE devices, such as CD-ROM drive) as "Auto". Since the HDD is detected automatically, you usually do not need to setup its parameters.

*Note: The contents may vary depending on computer configuration.*

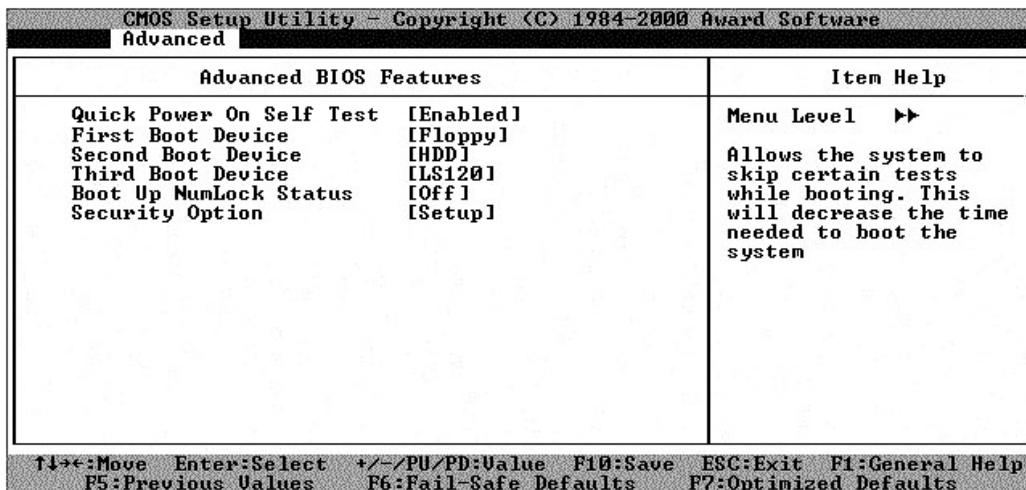
**Advanced**



Includes Advanced BIOS Features, Integrated Peripherals, Power Management, and PnP/PCI Configurations.

*PnP: Plug and Play devices.*

**Advanced BIOS Features**



You may set a quicker boot up (minimized self test procedure) or define boot up drive sequence, boot up status, etc. in this window.

**Security option:**

“Setup”: Password prompt at BIOS Setup. Only authorized user may perform setup.

“System”: Password prompt at boot up. Only authorized user may boot up the computer.

**Integrated Peripherals**

CMOS Setup Utility - Copyright (C) 1984-2000 Award Software	
Advanced	
Integrated Peripherals	Item Help
USB Keyboard Support	[Enabled]
COM1	[3F8/IRQ4]
COM1/Touch Screen Mode	[COM1]
COM2	[2F8/IRQ3]
COM2 Mode	[Standard]
FIR Mode Use DMA	[1]
Parallel Port	[378/IRQ7]
Parallel Port Mode	[Normal]
ECP Mode Use DMA	[3]
Parallel Port EPP Type	[EPP1.7]
Menu Level >>	

↑↓←→:Move Enter:Select +/-/PU/PD:Value F10:Save ESC:Exit F1:General Help  
 F5:Previous Values F6:Fail-Safe Defaults F7:Optimized Defaults

Serial, Parallel, and other ports’ modes are defined by this setup. You may disable some devices to free IRQ when necessary.

**Power Management**

CMOS Setup Utility - Copyright (C) 1984-2000 Award Software	
Advanced	
Power Management Setup	Item Help
Power Management	[Min Saving]
Doze Mode	[1 Min]
Standby Mode	[1 Hour]
Suspend Mode	[1 Hour]
HDD Power Down	[15 Min]
Suspend Mode Option	[Auto]
Auto Suspend Time Out	[1 Hour]
SpeedStep support	[Disabled]
Menu Level >>	

↑↓←→:Move Enter:Select +/-/PU/PD:Value F10:Save ESC:Exit F1:General Help  
 F5:Previous Values F6:Fail-Safe Defaults F7:Optimized Defaults

The Power Management supports various operating systems (OS). Doze and SpeedStep are OS-independent. Other options work in accordance with the OS power management components.

Windows 2000/ME would enable ACPI mode while Windows 95 enables APM mode.

Other OS (DOS, Windows NT, etc.) without ACPI or APM would apply generic power management.

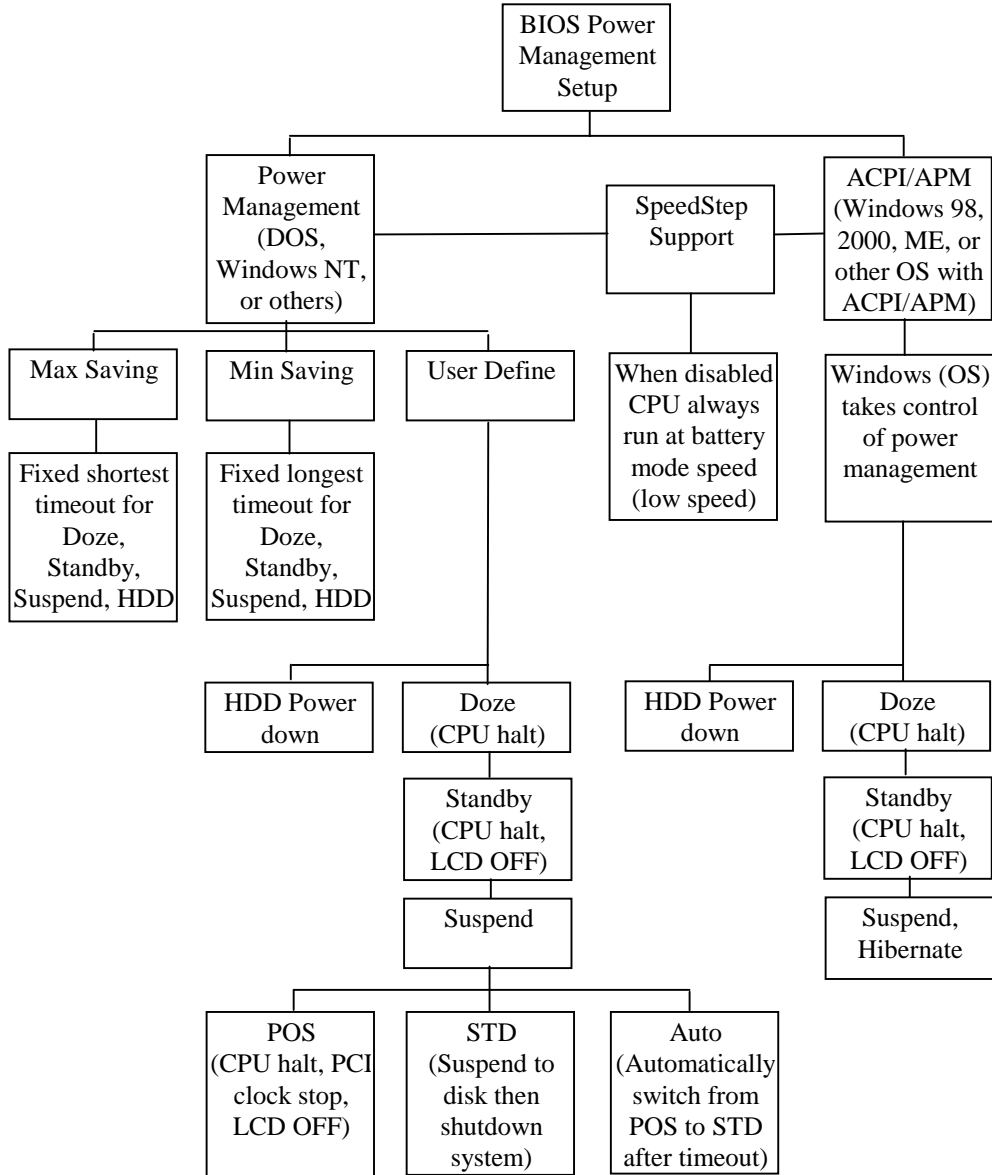
*POS: Power On Suspend (system does not turn off)*

*STD: Suspend To Disk (system turns off)*

*SpeedStep: Intel proprietary CPU speed control for mobile models (code name "Geyserville")*

<i>SpeedStep</i>	<i>AC adapter operation</i>	<i>Battery operation</i>
<i>Enabled</i>	<i>High speed</i>	<i>Low speed</i>
<i>Disabled</i>	<i>Low speed</i>	<i>Low speed</i>

**Power Management Functions:**



If STD is set, you should allocate a disk space to store the memory data. A utility **ZVHDD.EXE** performs FAT file allocation.

Run ZVHDD.EXE under DOS prompt.

Following is a sample command:

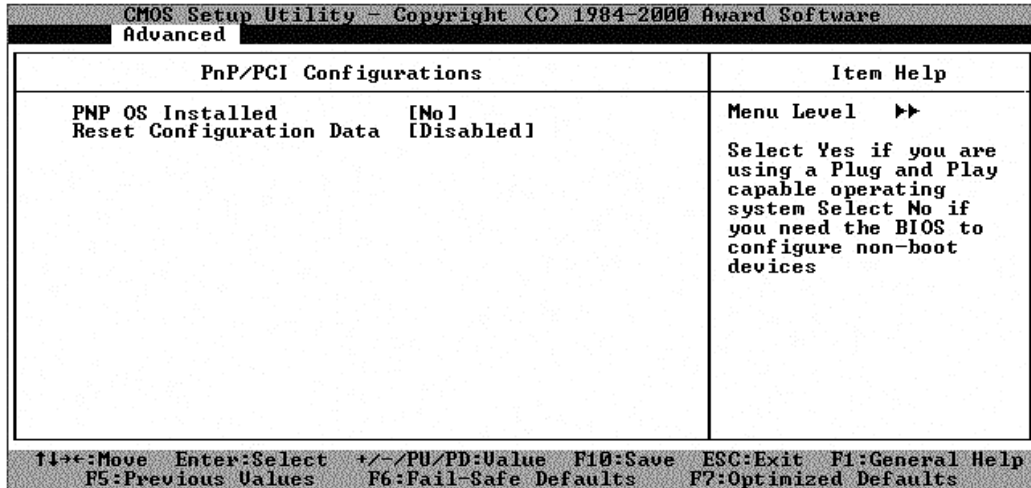
**ZVHDD /C /FILE /M:136**



The system will create a partition on the HDD to store memory data with file size of 136MB. You must specify a file size larger than your system memory plus video memory (8MB). For instance, if system memory is 128MB you should at least set 136MB.

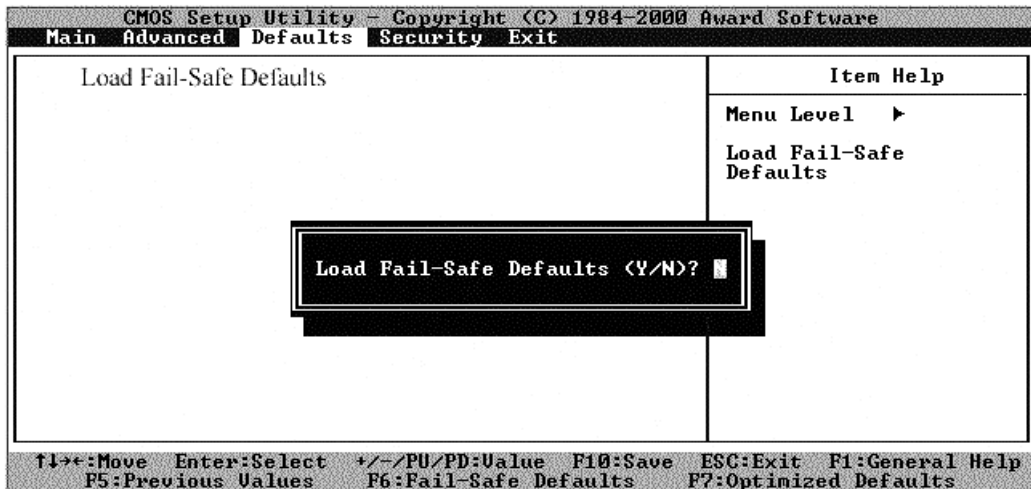
Type **ZVHDD /?** for more information.

### PnP/PCI Configurations



You only need to set this option when using a non-Windows OS.

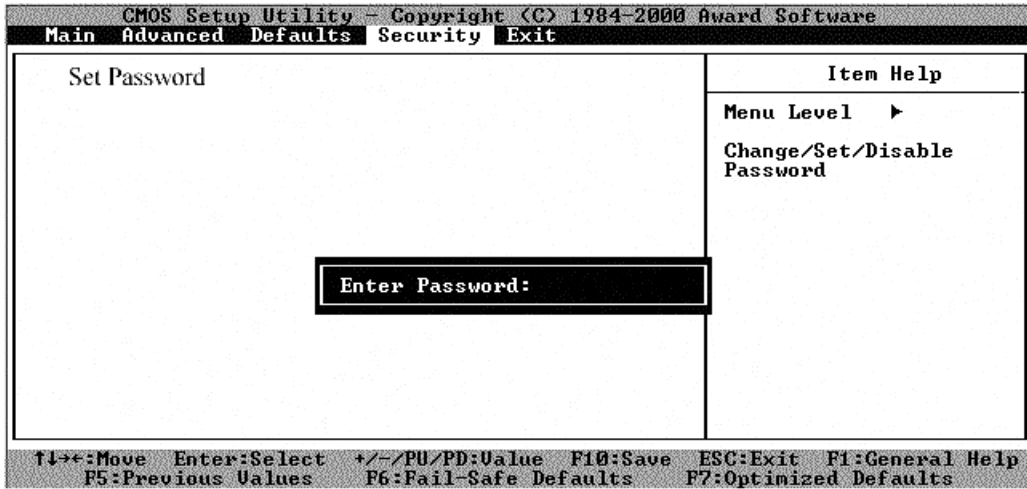
### Defaults



Load Fail-Safe Defaults:

You may load the factory setup parameters by this option. Default setup is usually the most fail-safe setting. Be sure to set your personal setup if there are additional devices installed.

### Security

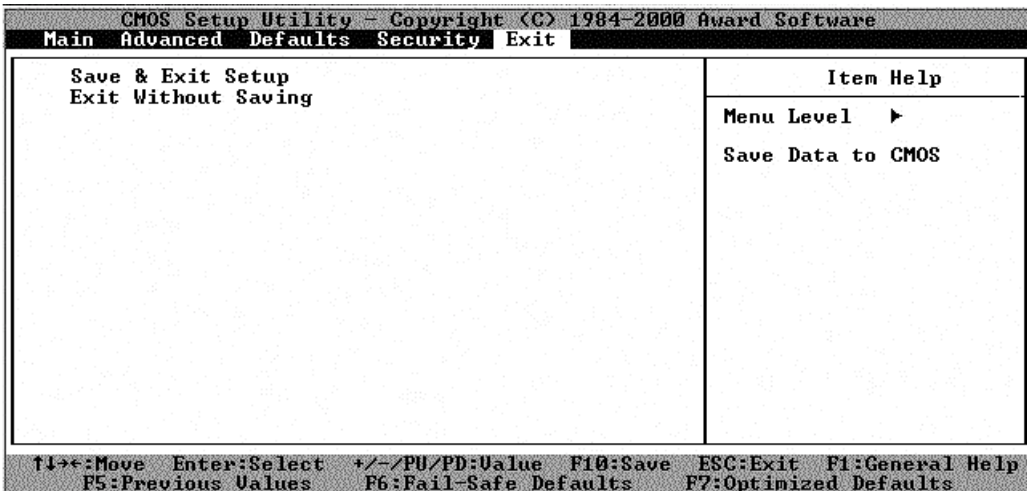


Set Password:

Set the password for the user who works with this computer.

Security setup options are available in **Advanced BIOS Features**.

### Exit



Choose “Save & Exit Setup” when you are sure of the setup. Choose “Exit Without Saving” when setup change is not needed.

## UTILITIES AND DRIVERS

*Note: Most device drivers are available in Windows 98/2000/ME. Only when the default driver does not work properly you need to install the factory bundled drivers.*

*Driver installation is necessary for DOS, Windows NT, or other non-Microsoft OS.*

*The utility CD includes most drivers.*

*Re-install drivers or perform "Driver Update" to replace the Windows default drivers.*

### VGA Utility

#### Display Capability

Resolution & Color	LCD	CRT	LCD + CRT
640x 480x 256 color	<input type="radio"/>	<input type="radio"/>	<input type="radio"/>
640x 480x 64K color	<input type="radio"/>	<input type="radio"/>	<input type="radio"/>
640x 480x 16M color	<input type="radio"/>	<input type="radio"/>	<input type="radio"/>
800x 600x 256 color	<input type="radio"/>	<input type="radio"/>	<input type="radio"/>
800x 600x 64K color	<input type="radio"/>	<input type="radio"/>	<input type="radio"/>
800x 600x 16M color	<input type="radio"/>	<input type="radio"/>	<input type="radio"/>
1024x 768x 256 color	<input type="radio"/>	<input type="radio"/>	<input type="radio"/>
1024x 768x 64K color	<input type="radio"/>	<input type="radio"/>	<input type="radio"/>
1024x 768x 16M color	<input type="radio"/>	<input type="radio"/>	<input type="radio"/>
1280x 1024x 256 color	<input type="radio"/> *	<input type="radio"/>	<input type="radio"/> *
1280x 1024x 64K color	<input type="radio"/> *	<input type="radio"/>	<input type="radio"/> *
1280x 1024x 16M color	<input type="radio"/> *	<input type="radio"/>	<input type="radio"/> *

1600x 1200x 256 color	<input type="radio"/> *	<input type="radio"/>	<input type="radio"/> *
1600x 1200x 64K color	<input type="radio"/> *	<input type="radio"/>	<input type="radio"/> *

\*: By Panning.

The table lists typical display modes only. The system also supports standard video modes with lower resolution and color.

**Windows 98/2000/ME/NT Driver Installation:**

Insert the Driver CD into the CD-ROM. Click **Display** in **Control Panel** then select **Settings**, follow prompt to complete driver installation. Windows 98/2000/ME may recommend using their driver, but you should confirm changing to the factory bundled driver.

Back to **Settings** window, choose proper **Colors** and **Screen Area**, then click **OK** and restart Windows.

**Mouse Driver**

The mouse driver is not included in utilities It is usually not necessary to install a mouse driver because the operating system will do it automatically.

You may obtain mouse driver from the dealer if it's really needed.

**Touch Screen Driver**

First please enter BIOS Setup and set COM1 port as "Touch Screen". (Optional COM4 may be configured as touch screen, too.)

Then install the drivers under Windows by **Add Hardware**.

**CD-ROM Driver**

In Windows 98/2000/ME/NT, you don't need to install drivers, because it is included in the drivers list.

Only DOS needs the driver

**PCMCIA Driver**

**Windows 98/2000/ME/NT**

The driver is automatically installed under Windows.

Windows 98/2000/ME/NT can also detect new PCMCIA cards or by **Add Hardware**. You simply insert your PCMCIA card and click the icon, then follow the prompt to complete the installation.

### Audio Driver

In Windows 98/2000/ME click **System** → **Hardware** → **Device Manager** → choose **Sound, video and game controllers**, then choose audio device to update driver.

In Windows NT, Click **Multimedia** → **Peripheral** → **Driver** to install it.

### LAN Card Driver

In Windows 98/2000/ME click **System** → **Hardware** → **Device Manager** → choose **Network adapters**, then choose the appropriate device and click **Driver** → **Update Driver**. Follow the prompt to complete installation.

In Windows NT click **Network** → **Adapter** → **New ..** to install driver.

LAN card is not recommended for working under Windows 3.1.

### Fax/Modem Card Driver

First you should set COM2 as **Fax/Modem** in **Integrated Peripheral** of **BIOS Setup**.

Please also check whether IrDA is disabled in Windows configuration.

Windows 98/2000/ME will detect Fax/Modem card as new hardware and begin driver installation.

In Window NT click **Modem** and follow prompt to install driver.

Restart the computer to enable your new device.

## MAINTENANCE / SERVICE

### Cleaning

Wipe the exterior with a clean, soft, and lint-free cloth. If there is difficulty to remove dirt, apply non-ammonia, non-alcohol based glass cleaner onto the cloth.

An air gun is recommended for cleaning water and dust. For salty water please clean with fresh water then blow-dry with an air gun. Be sure not to turn the computer up side down while there is water being applied.

ALWAYS turn OFF the power, unplug the power cord and remove the battery before cleaning.

### Troubleshooting

Should the computer failed to function properly, you may try the following to troubleshoot it.

- Check AC/vehicle adapter, battery, and the power source.
- Minimize the configuration, i.e., remove extra peripherals and devices.
- Remove the modules one by one (HDD, CD-ROM, FDD, Battery, etc.).
- Remove the software suspected.
- Set BIOS fail-safe default.
- Re-install operating system and application software.

### RMA Service

If all of the user troubleshooting approaches still cannot help, consult the dealer for service. When sending out the computer, please follow the re-packing guides:

- Remove the CD/diskette (if any) in the CD-ROM/floppy disk drive.
- Use the original shipping container and packing materials if possible.
- When not using the original packing material, wrap the equipment with soft material (e.g., PU/ PE form) then put it into a hard carton.
- Secure the separate parts so they would not mix together during transportation.

- Send ALL parts of your configuration, including hardware/software, if possible.
- Include DETAILED descriptions of the problems you encountered, and the list of your hardware/software configuration.



Recycled / Recycleable  
Printed in Taiwan