

IBM Network Station Family of Thin Clients
Access for today, flexibility for tomorrow



Network Station Manager V2R1 Overview

August 29, 1999





Network Station Manager

What's New

■ UI Enhancements

- ▶ New look and feel
- ▶ Integrated scope panel
- ▶ Re-categorized setup tasks

■ Coexistence

- ▶ V1R3 NSM and V2R1 NSM can coexist on the same server
- ▶ New V2R1 NSM URL - <http://servername/networkstationv2/admin>
- ▶ V1R3 NSM must be used for series 100 Network Stations

■ Registry Integration

- ▶ All NSM preferences written to XML 'download profiles'
- ▶ Command-line interface to edit the profiles
- ▶ Kiosk template support
- ▶ Migration from V1R3 preference files



Network Station Manager

What's New

- **Launchbar configuration**

- ▶ **New UI that replaces the V1R3 Startup/Programs and Startup/Menus setup tasks**
- ▶ **Allows configuration of launchbar/folder hierarchy for the V2R1 desktop**
- ▶ **Allows configuration of new applications**



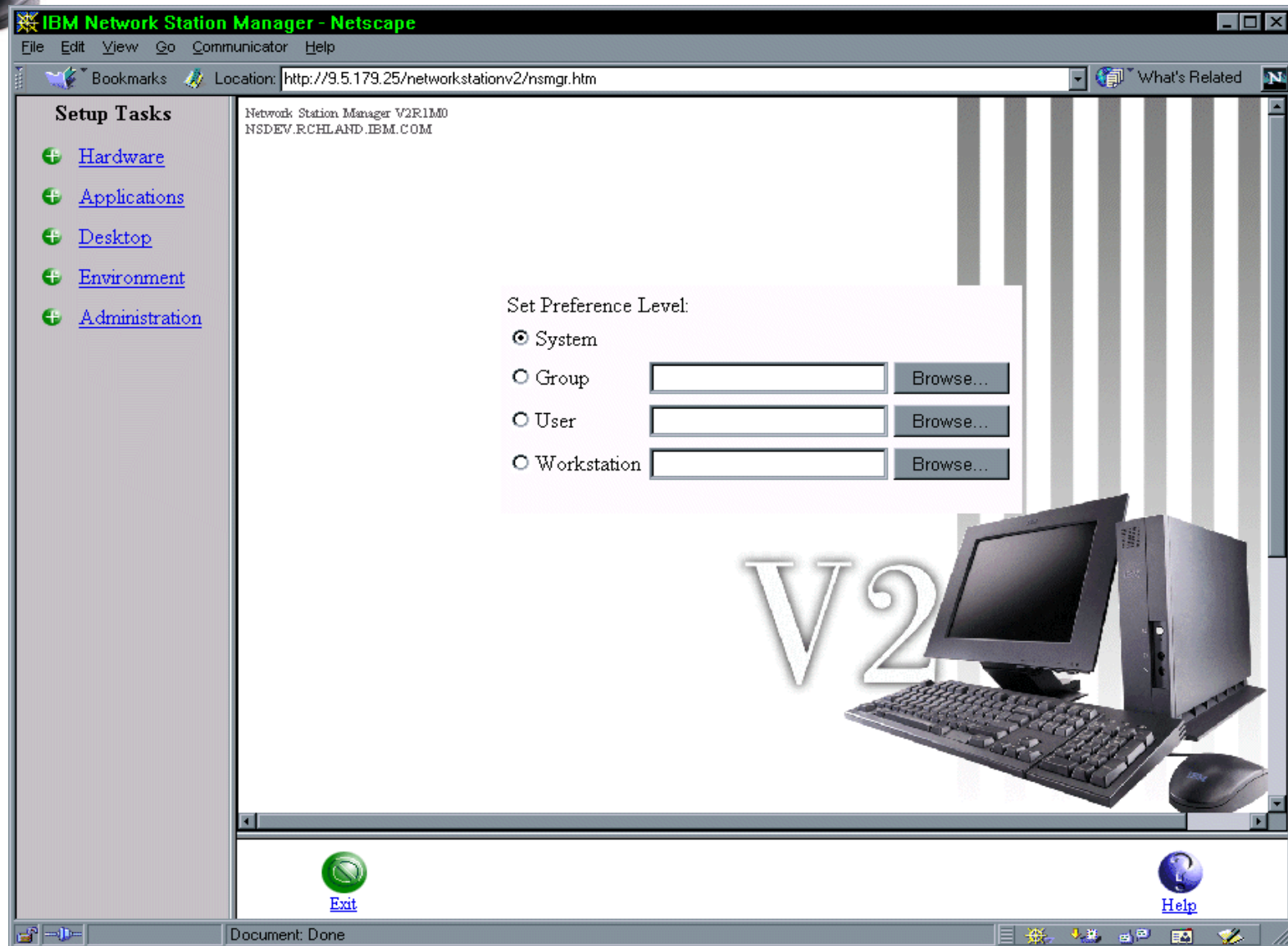
Network Station Manager

What's New

- **Other new NSM configuration options**
 - ▶ Configuration of parameters for new NC desktop and OS
 - ▶ Deep color support
 - ▶ Multiple serial printer and serial device support
 - ▶ VT Emulator preference configuration
 - ▶ Netscape internal JVM and Java Plugin support
 - ▶ ICA Connection Entry configuration for the ICA Remote Application Manager
 - ▶ Custom mount point configuration
 - ▶ Euro support
 - ▶ Flashcard image configuration
- **What's been removed**
 - ▶ Some V1R3 desktop/OS parameters that do not apply to the new OS
 - ▶ Omron support
 - ▶ JITC configuration
 - ▶ Support for some languages and keyboards

Network Station Manager

Main Screen with Integrated Scope





Network Station Manager

V2R1 Admin View Features

Hardware

Workstations

- Mouse settings
- Keyboard settings
- Monitor settings
- Local services
- Domain name server
- Boot parameters
- Workstation management

Printers

- Printer services (LPD/LPR)
- Printer lists

Serial Devices

- Serial device services**
- Other serial devices**

Applications

5250

- Keyboard mapping
- Keypad
- Record/Playback
- Colors
- Appearance
- Allow use of

Additional Parameters

3270

- Keyboard mapping
- Keypad

Applications (continued)

3270 (continued)

- Record/Playback
- Colors
- Appearance
- Allow use of
- Additional Parameters**

VT Emulator

- Keyboard**
- Allow use of**
- Advanced settings**
- Additional Parameters**

Netscape Communicator

- Proxy Configuration
- Java
- Network
- Mail server type
- Netscape Java classpath**
- Garbage collection**
- Memory settings**
- Properties (optional)**

Applet Viewer

- Applet Viewer classpath**
- Garbage collection
- Memory settings
- Properties (optional)

ICA Remote App Manager

- ICA connection entries**

Desktop

Display

- Window appearance**
- Launch bar options**
- Fonts
- Desktop buttons**

Launch Bar

Folders

- 5250 Emulator
- 3270 Emulator
- VT Emulator

Windows-based App

ICA Remote App Manager

- Netscape Communicator
- Java Application
- Java Applet

File Manager

Text Editor

Calendar

Calculator

Audio Player

Video Player

Real Player

Paint

- Remote Program

- Local Program

Custom URL

Advanced Diagnostics

Desktop (continued)

Launch Bar (continued)

Print Monitor

Calibration Tools

XTerm

Network Station Manager

Environment

General

- Environment variables to set

Network

- Personal
- Proxies
- Proxy exceptions
- Mail and news servers
- Ports

Additional mount points

Language

Enable Euro Support

- Language selections

Administration

User's Group

Flash Manager

Applications

Image selection

Hardware support

NSM configuration

Network Station Manager

V2R1 User View Features



Hardware

Workstations

Mouse settings
 Keyboard settings
 Monitor settings
 Local services
 Domain name server
 Boot parameters
 Workstation management

Printers

Printer services
 (LPD/LPR)
 Printer lists

Serial Devices

Serial device services
Other serial devices

Applications

5250

Keyboard mapping
 Keypad
 Record/Playback
 Colors
 Appearance
 Allow use of
Additional Parameters

3270

Keyboard mapping
 Keypad

Applications (continued)

3270 (continued)

Record/Playback
 Colors
 Appearance
 Allow use of
Additional Parameters

VT Emulator

Keyboard
Allow use of
Advanced settings
Additional Parameters

Netscape Communicator

Proxy Configuration
 Java
 Network
 Mail server type
Netscape Java

classpath

Garbage collection
Memory settings
Properties (optional)

Applet Viewer

Applet Viewer classpath
 Garbage collection
 Memory settings
 Properties (optional)

ICA Remote App Manager

ICA connection entries

Desktop

Display

Window appearance
Launch bar options
 Fonts
Desktop buttons

Launch Bar

Folders

5250 Emulator
 3270 Emulator
 VT Emulator

Windows-based App

ICA Remote App

Manager

Netscape Communicator
 Java Application
 Java Applet
File Manager
Text Editor
Calendar
Calculator
Audio Player
Video Player
Real Player
Paint
 Remote Program
 Local Program
Custom URL
Advanced Diagnostics

Desktop (continued)

Launch Bar (continued)

Print Monitor
Calibration Tools
XTerm
Network Station Manager

Environment

General

Environment variables to set

Network

Personal
 Proxies
 Proxy exceptions
 Mail and news servers
 Ports
Additional mount points

Language

Enable Euro Support
 Language selections

Administration

User's Group

Flash Manager

Applications
Image selection
Hardware support
NSM configuration



Network Station Manager

Support Requirements

- **Supported browsers**

- ▶ Netscape 4.5 or above
- ▶ Microsoft Internet Explorer 4 or above

- **Platform requirements**

- ▶ **AS/400**

- Supported on V4R2, V4R3, and V4R4
- NS Wizard must be run before using NSM
 - *Ensures that the appropriate products, PTFs, and HTTP server directives are installed.*