

GS SOUND CARD

SCC-1



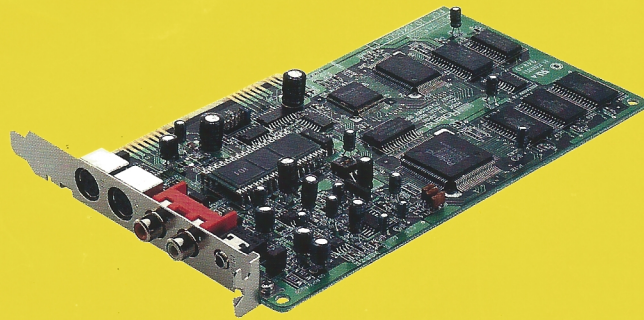
for **IBM**® compatible



Experience the difference in music sound quality

The SCC-1 GS Sound Card is a sound synthesizer and MIDI interface for IBM-compatible personal computers, incorporating new Roland digital sound sampling technology.

The SCC-1 provides a great selection of high-quality musical instrument sounds and sound effects that you can use with multimedia and other computer music applications.



 **Roland**®

True CD-quality sound for your PC

1 Exceptional Sound Quality

The SCC-1 contains 317 incredibly realistic acoustic and electronic instrument sounds, plus nine separate drum sets and a set of sound effects. On-board digital reverb/delay and chorus help recreate naturally occurring room ambience for each instrument. The SCC-1's outstanding sound quality makes it perfect for any application, from computer games to professional business presentations.

● SCC-1 Main Tone Mapping (GS Capital/General MIDI Sound set)

1	Piano 1	33	Acoustic Bs.	65	Soprano Sax	97	Ice Rain
2	Piano 2	34	Fingered Bs.	66	Alto Sax	98	Soundtrack
3	Piano 3	35	Picked Bs.	67	Tenor Sax	99	Crystal
4	Honky-tonk	36	Fretless Bs.	68	Baritone Sax	100	Atmosphere
5	E.Piano 1	37	Slap Bass 1	69	Oboe	101	Brightness
6	E.Piano 2	38	Slap Bass 2	70	English Horn	102	Goblin
7	Harpichord	39	Synth Bass 1	71	Bassoon	103	Echo Drops
8	Clav.	40	Synth Bass 2	72	Clarinet	104	Star Theme
9	Celesta	41	Violin	73	Piccolo	105	Sitar
10	Glockenspiel	42	Viola	74	Flute	106	Banjo
11	Music Box	43	Cello	75	Recorder	107	Shamisen
12	Vibraphone	44	Contrabass	76	Pan Flute	108	Koto
13	Marimba	45	Tremolo Str.	77	Bottle Blow	109	Kalimba
14	Xylophone	46	Pizzicato Str.	78	Shakuhachi	110	Bag Pipe
15	Tubular-bell	47	Harp	79	Whistle	111	Fiddle
16	Santur	48	Timpani	80	Ocarina	112	Shanai
17	Organ 1	49	Strings	81	Square Wave	113	Tinkle Bell
18	Organ 2	50	Slow Strings	82	Saw Wave	114	Agogo
19	Organ 3	51	Syn. Strings 1	83	Syn. Callope	115	Steel Drums
20	Church Org. 1	52	Syn. Strings 2	84	Chiffer Lead	116	Woodblock
21	Reed Organ	53	Choir Aahs	85	Charang	117	Taiko
22	Accordion Fr.	54	Voice Oohs	86	Solo Vox	118	Melo. Tom 1
23	Harmonica	55	Syn. Vox	87	5th Saw Wave	119	Synth Drum
24	Bandneon	56	Orchestra Hit	88	Bass & Lead	120	Reverse Cym.
25	Nylon-str. Gt.	57	Trumpet	89	Fantasia	121	Gt. Fret noise
26	Steel-str. Gt.	58	Trombone	90	Warm Pad	122	Breath Noise
27	Jazz Gt.	59	Tuba	91	Polysynth	123	Seashore
28	Clean Gt.	60	Muted Trumpet	92	Space Voice	124	Bird
29	Muted Gt.	61	French Horn	93	Bowed Glass	125	Telephone 1
30	Overdrive Gt.	62	Brass 1	94	Metal Pad	126	Helicopter
31	Distortion Gt.	63	Synth Brass 1	95	Halo Pad	127	Applause
32	Gt. Harmonics	64	Synth Brass 2	96	Sweep Pad	128	Gun Shot

● SCC-1 Drums Set

DRUMS SET	Standard set	Room set	Power set
Electronic set	TR-808 set	Jazz set	Brush set
Orchestra set	CM-64/32L set	SFX SET	SFX set

2 GS/General MIDI/MPC Compatible

To ensure compatibility with the widest variety of applications, the SCC-1 supports Roland's GS format for musical performance data. This format, which standardizes tone mapping and other sound source parameters, is a superset of General MIDI System Level 1, endorsed by Microsoft® for Windows™ and MPC applications. These standards make it possible for the SCC-1 to consistently and accurately play back music created on any compatible system.

© IBM is a registered trademark of the International Business Machines Corporation.

© Microsoft is a registered trademark and Windows is a trademark of Microsoft Corporation.

3 Powerful multitimbral capability

The SCC-1 can simultaneously produce the sounds of up to 16 different individual and ensemble instruments. With 24-voice polyphony, you can create rich, full orchestrations in virtually any musical style.

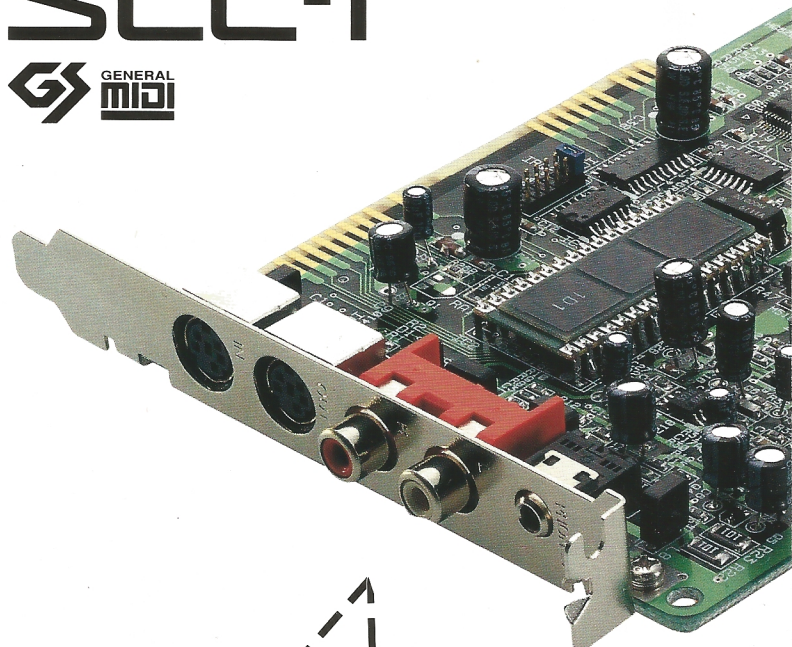
4 MT-32/LAPC-I Compatible

The SCC-1 includes 128 Tones that emulate the tone assignments of the MT-32, CM-32L, LAPC-I and the LA section of the CM-64. Using the included MT-32 Emulation utility software, the SCC-1 can play back most song data created for the Roland MT-32, LAPC-I or CM-32L without modification. This makes the SCC-1 compatible with any computer game that utilizes the Mt-32's tone assignments*.

* The SCC-1 will not respond to MT-32 System Exclusive messages.

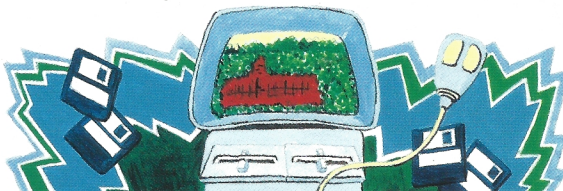
GS SOUND CARD

SCC-1

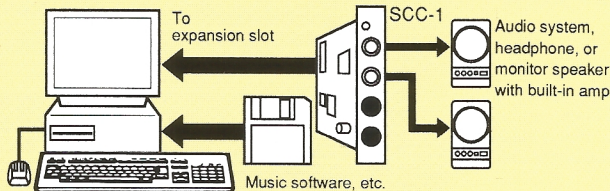


Games...

Nothing adds greater excitement to computer games than the SCC-1's dynamic sounds and sound effects. In addition to a wide range of third-party MT-32 compatible games already on the market, several games developed with GS format music will soon be making their debuts. Computer games have never sounded so impressive!



5 Quick and easy MIDI capability

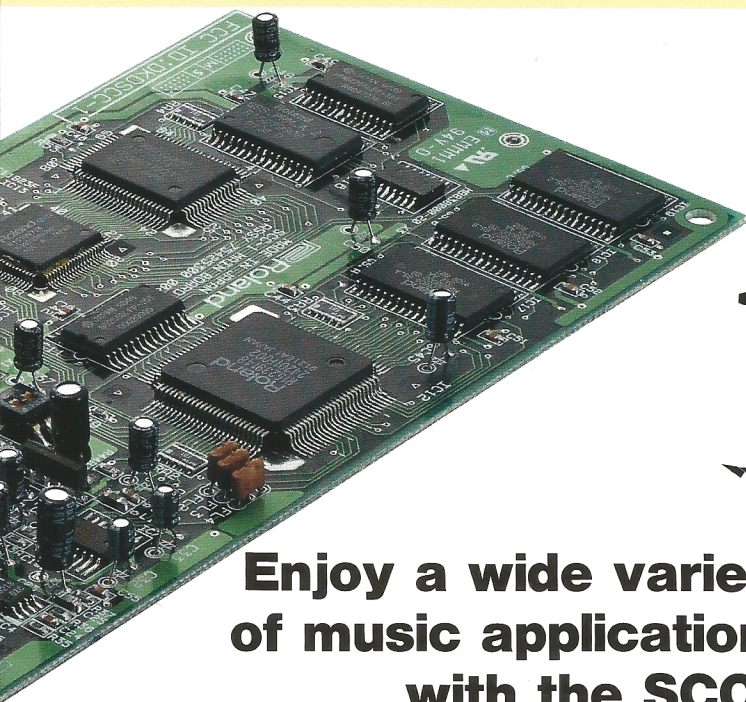


Just insert the SCC-1 sound card in your computer and connect it to your stereo, audio system or headphones. MIDI and audio cables are already included in the SCC-1 package, along with a utility disk which will check your system for proper operation and allow you to play the included six demo songs. Since the SCC-1 also features an MPU-401 compatible MIDI interface, you can immediately use all available MPU-401 compatible software.



Roland's GS format standardizes the most important MIDI parameters for present and future Roland MIDI musical instruments. All Roland GS format

synthesizers have similar sounds and sound enhancement features, so that music created on one will play back identically on all others. This not only ensures a wide variety of sound sources for GS music, but it also means your sequencers will always be playable regardless of future hardware changes or updates. Roland's GS format is a superset of the General MIDI System Level 1 adopted by all major MIDI hardware and software companies. GS sound sources include General MIDI System Level 1 features, plus additional parameters such as Reverb, Chorus and sound variations that add depth and realism to your music. Roland's GS format helps protect your investment in MIDI hardware today and for tomorrow.



Enjoy a wide variety of music applications with the SCC-1

Interactive listening...

Now you can listen to your favorite music, and change the performance any way you like. Various Standard MIDI Files song data are already available, such as Roland's SMF Music Data Series, that are fully editable with appropriate software. You can change the tempo, mute or select new instruments, and sing or play along with full accompaniment on the SCC-1 sound card, bringing you a whole new way to enjoy music.



Education...

With appropriate software, the SCC-1 is perfect for music education. You can learn about music fundamentals including note recognition, intervals, chords and rhythm. For example, MIDI-based music tutorials can use the SCC-1 to provide musical examples for you to practice via a MIDI keyboard. With its realistic instrument sounds, the SCC-1 can also assist with the study of orchestration, arranging and composition.

Multimedia...

The SCC-1 provides impressive accompaniment for leading multimedia software titles that support MIDI. MPC compatibility ensures that the SCC-1 will be useful with a variety of software for working, learning and playing on your multimedia computer. The SCC-1 can also be used to compose original music for everything from desktop presentations to video productions.

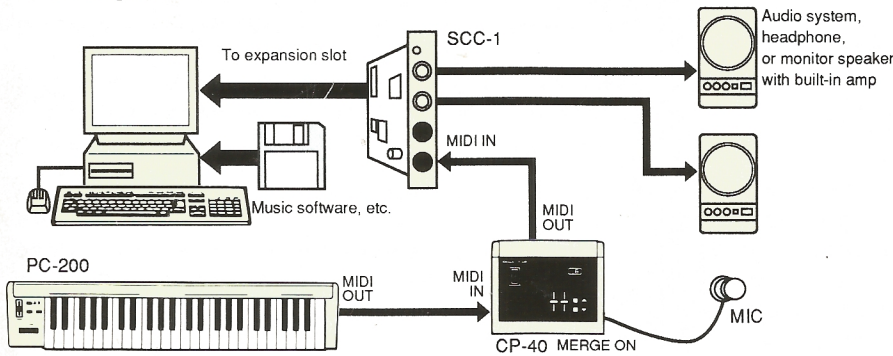
Creative computing and composition

The SCC-1 is well-equipped for home and professional level sequencing and composition tasks. With its MPU-401-compatible interface, you can use any of the many popular sequencing and notation programs currently available. In addition, software which supports the GS format enable you to take full advantage of the musical power and capabilities of the SCC-1.

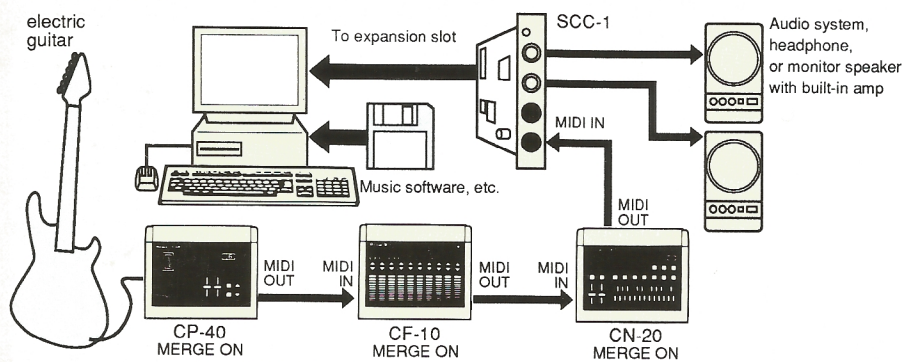


You can connect the SCC-1 to other MIDI instruments such as pitch-to-MIDI converters, keyboards or sound modules to facilitate the recording of your own performances and increase your available sounds. This allows you to create as simple or complex a MIDI system as you wish.

■ **Example 1**



■ **Example 2**



■ **Specifications**

Multitimbral Capability :
16 Parts (with 1 or 2 Rhythm parts)
Maximum Polyphony : 24 voices
Effects :
Reverb and Chorus
(with separate amounts per part)
Tone :
317 (GS Capital and variations)
9 Rhythm Sets
1 Sound Effects Set
MIDI Interface :
Roland MPU-401 Compatible
(without tape sync, din sync or metronome option)
Selectable IRQ2-7
Selectable Base I/O Address 330H-336H
Connections :
Audio Line Out : RCA phone jack × 2 (L/R)
Headphone Out : MINI stereo (1/8")
MIDI In/Out : MINI Din to MIDI cable × 2 (included)
Power Supply :
Source : PC Buss (internal)
Current Draw : 200mA @ 5v, 20mA @ 12v
Dimensions :
198 (W) × 126 (D) × 23 (H) mm
(7-13/16" × 4-15/16" × 7/8")
Weight : 170 g (6 oz)
Included Accessories :
MIDI Connection cable × 2
Audio cable × 2
Utility software (3.5" and 5.25" disks)
Requirements :
PC/XT/AT or compatible with half-size 8-bit slot; PS/1 Model B32, PS/1 models with Adapter Card Unit; PS/2 Models 25, 30, 30-286, 35 SX and 40 SX; or similar ISA-type computers

© IBM PC, XT, AT, PS/1 and PS/2 are trademarks of the International Business Corporation.

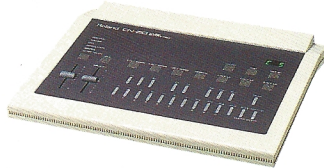
Options

● **PC-200 MIDI Keyboard Controller**



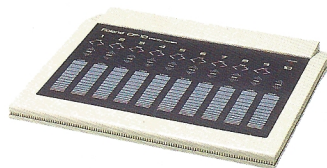
Compact 49-note MIDI keyboard ideal for desktop use and realtime performance and recording.

● **CN-20 Music Entry Pad**



Even if you have little or no keyboard skills, you can easily enter MIDI data by simply pressing the appropriate note or chord buttons on the CN-20's front panel. You can even input volume and pitch bend data with data sliders.

● **CF-10 Digital Fader**



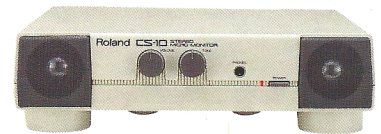
Volume and panning of multiple parts can be controlled simultaneously via MIDI.

● **CP-40 Pitch to MIDI Converter**



Microphone converts your voice or any acoustic instrument sounds into MIDI messages, enabling easy playback of any sound from your favorite instrument.

● **CS-10 Stereo Monitor Amp**



Integrates a stereo amplifier and speaker system in a compact unit that fits under most CRT monitors for personal desktop use.

● **MA-12C Micro Monitor**



Magnetically shielded integrated amplifier/monitor with a 10W amplifier and 4" speaker offers full sound reproduction with separate high/low boost controls and three inputs.

※ Specifications and appearance subject to change without notice.



Roland Corp US

7200 Dominion Circle
Los Angeles, CA, 90040-3647
U.S.A.

Phone(213)685-5141