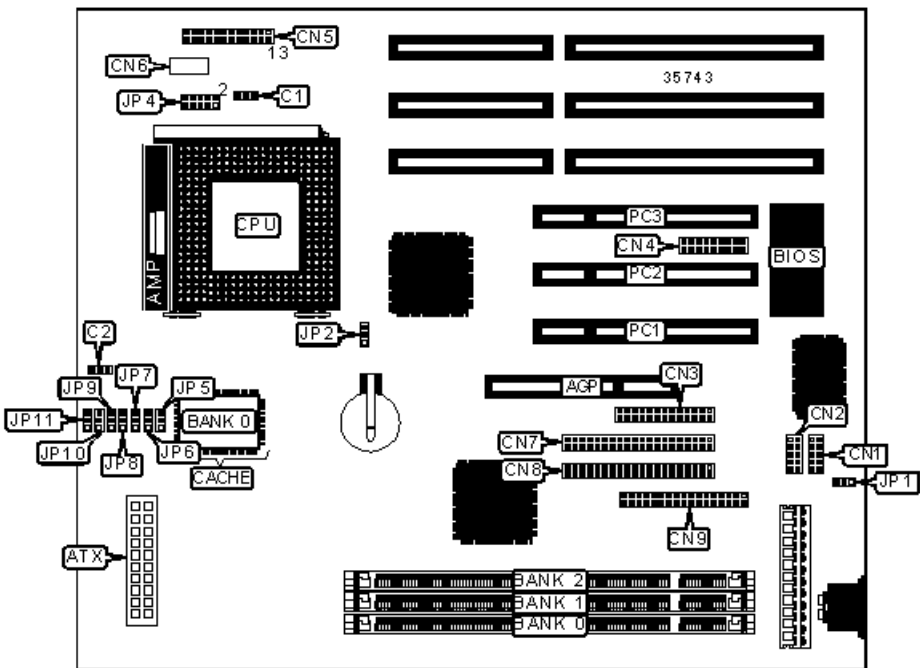


CHAINTECH COMPUTER COMPANY, LTD.

CT-5AGM2

Device Type	Mainboard
Processor	CX 6X86/IBM 6X86/CX 6X86L/IBM 6X86L/CX 686MX/IBM 6X86MX/CX MII/IBM MII/AM K5/AM K6/AM K6-2/IDT C6/Pentium/Pentium MMX
Processor Speed	133/166/200/225/233/266/300MHz
Chip Set	VIA MVP3
Video Chip Set	None
Maximum Onboard Memory	384MB (EDO & SDRAM supported)
Maximum Video Memory	None
Cache	512KB
BIOS	Award
Dimensions	240mm x 220mm
I/O Options	32-bit PCI slots (3), floppy drive interface, green PC connector, IDE interfaces (2), parallel port, PS/2 mouse interface, serial ports (2), IR connector, USB connectors (2), ATX power connector, AGP slot



CONNECTIONS			
Purpose	Location	Purpose	Location
AGP slot	AGP	Turbo LED	CN5/pins 13 & 14
ATX power connector	ATX	Green PC connector	CN5/pins 16 & 17
CPU fan power	C1	Green PC LED	CN5/pins 18 & 19
Chassis fan power	C2	Reset switch	CN5/pins 21 & 22

Serial port 2	CN1	IDE interface LED	CN5/pins 23 & 24
Serial port 1	CN2	Fan 78 connector	CN6
Parallel port	CN3	IDE interface 2	CN7
USB, IR, PS/2 mouse	CN4	IDE interface 1	CN8
Power LED & keylock	CN5/pins 1 – 5	Floppy drive interface	CN9
Speaker	CN5/pins 7 – 10	32-bit PCI slots	PC1 – PC3
Soft off power supply	CN5/pins 11 & 12		

USER CONFIGURABLE SETTINGS

	Function	Label	Position
	Power supply select AT	JP1	Pins 1 & 2 closed
	Power supply select ATX	JP1	Pins 2 & 3 closed
»	CMOS memory normal operation	JP2	Pins 1 & 2 closed
	CMOS memory clear	JP2	Pins 2 & 3 closed

DIMM CONFIGURATION

Size	Bank 0	Bank 1	Bank 2
8MB	(1) 1M x 64	None	None
16MB	(1) 2M x 64	None	None
16MB	(1) 1M x 64	(1) 1M x 64	None
24MB	(1) 2M x 64	(1) 1M x 64	None
24MB	(1) 1M x 64	(1) 1M x 64	(1) 1M x 64
32MB	(1) 4M x 64	None	None
32MB	(1) 2M x 64	(1) 1M x 64	(1) 1M x 64
32MB	(1) 2M x 64	(1) 2M x 64	None

40MB	(1) 4M x 64	(1) 1M x 64	None
40MB	(1) 2M x 64	(1) 2M x 64	(1) 1M x 64
48MB	(1) 4M x 64	(1) 1M x 64	(1) 1M x 64
48MB	(1) 4M x 64	(1) 2M x 64	None
48MB	(1) 2M x 64	(1) 2M x 64	(1) 2M x 64
56MB	(1) 4M x 64	(1) 2M x 64	(1) 1M x 64

DIMM CONFIGURATION (CON'T)

Size	Bank 0	Bank 1	Bank 2
64MB	(1) 8M x 64	None	None
64MB	(1) 4M x 64	(1) 2M x 64	(1) 2M x 64
64MB	(1) 4M x 64	(1) 4M x 64	None
72MB	(1) 8M x 64	(1) 1M x 64	None
72MB	(1) 4M x 64	(1) 4M x 64	(1) 1M x 64
80MB	(1) 8M x 64	(1) 1M x 64	(1) 1M x 64
80MB	(1) 8M x 64	(1) 2M x 64	None
80MB	(1) 4M x 64	(1) 4M x 64	(1) 2M x 64
88MB	(1) 8M x 64	(1) 2M x 64	(1) 1M x 64
96MB	(1) 8M x 64	(1) 2M x 64	(1) 2M x 64
96MB	(1) 8M x 64	(1) 4M x 64	None
96MB	(1) 4M x 64	(1) 4M x 64	(1) 4M x 64
104MB	(1) 8M x 64	(1) 4M x 64	(1) 1M x 64
112MB	(1) 8M x 64	(1) 4M x 64	(1) 2M x 64
128MB	(1) 16M x 64	None	None
128MB	(1) 8M x 64	(1) 4M x 64	(1) 4M x 64

128MB	(1) 8M x 64	(1) 8M x 64	None
136MB	(1) 16M x 64	(1) 1M x 64	None
136MB	(1) 8M x 64	(1) 8M x 64	(1) 1M x 64
144MB	(1) 16M x 64	(1) 1M x 64	(1) 1M x 64
144MB	(1) 16M x 64	(1) 2M x 64	None
144MB	(1) 8M x 64	(1) 8M x 64	(1) 2M x 64
152MB	(1) 16M x 64	(1) 2M x 64	(1) 1M x 64
160MB	(1) 16M x 64	(1) 2M x 64	(1) 2M x 64
160MB	(1) 16M x 64	(1) 4M x 64	None
168MB	(1) 16M x 64	(1) 4M x 64	(1) 1M x 64
176MB	(1) 16M x 64	(1) 4M x 64	(1) 2M x 64
192MB	(1) 16M x 64	(1) 4M x 64	(1) 4M x 64
192MB	(1) 16M x 64	(1) 8M x 64	None
192MB	(1) 8M x 64	(1) 8M x 64	(1) 8M x 64
200MB	(1) 16M x 64	(1) 8M x 64	(1) 1M x 64
208MB	(1) 16M x 64	(1) 8M x 64	(1) 2M x 64
224MB	(1) 16M x 64	(1) 8M x 64	(1) 4M x 64
256MB	(1) 16M x 64	(1) 8M x 64	(1) 8M x 64
384MB	(1) 16M x 64	(1) 16M x 64	(1) 16M x 64
Note: Board accepts EDO & SDRAM memory.			

DIMM FREQUENCY CONFIGURATION

Frequency		JP11
»	Runs at CPU clock	Pins 1 & 2 closed
	Runs at AGP clock	Pins 2 & 3 closed

CACHE CONFIGURATION**Size****Bank 0**

512KB

(1) 64K x 64

CPU SPEED SELECTION (CX 6X86)

CPU speed	Clock speed	Multiplier	JP5	JP6	JP7	JP8	JP9	JP10
166MHz	66MHz	2x	1 & 2	2 & 3	2 & 3	2 & 3	1 & 2	1 & 2
200MHz	75MHz	2x	1 & 2	1 & 2	2 & 3	2 & 3	1 & 2	1 & 2

Note: Pins designated should be in the closed position.

CPU SPEED SELECTION (IBM 6X86)

CPU speed	Clock speed	Multiplier	JP5	JP6	JP7	JP8	JP9	JP10
166MHz	66MHz	2x	1 & 2	2 & 3	2 & 3	2 & 3	1 & 2	1 & 2
200MHz	75MHz	2x	1 & 2	1 & 2	2 & 3	2 & 3	1 & 2	1 & 2

Note: Pins designated should be in the closed position.

CPU SPEED SELECTION (CX 6X86L)

CPU speed	Clock speed	Multiplier	JP5	JP6	JP7	JP8	JP9	JP10
166MHz	66MHz	2x	1 & 2	2 & 3	2 & 3	2 & 3	1 & 2	1 & 2
200MHz	75MHz	2x	1 & 2	1 & 2	2 & 3	2 & 3	1 & 2	1 & 2

Note: Pins designated should be in the closed position.

CPU SPEED SELECTION (IBM 6X86L)

CPU speed	Clock speed	Multiplier	JP5	JP6	JP7	JP8	JP9	JP10
166MHz	66MHz	2x	1 & 2	2 & 3	2 & 3	2 & 3	1 & 2	1 & 2
200MHz	75MHz	2x	1 & 2	1 & 2	2 & 3	2 & 3	1 & 2	1 & 2

Note: Pins designated should be in the closed position.

CPU SPEED SELECTION (CX 6X86MX)

CPU speed	Clock speed	Multiplier	JP5	JP6	JP7	JP8	JP9	JP10
166MHz	66MHz	2x	1 & 2	2 & 3	2 & 3	2 & 3	1 & 2	1 & 2
200MHz	66MHz	2.5x	1 & 2	2 & 3	2 & 3	2 & 3	2 & 3	1 & 2
200MHz	75MHz	2x	1 & 2	1 & 2	2 & 3	2 & 3	1 & 2	1 & 2
233MHz	75MHz	2.5x	1 & 2	1 & 2	2 & 3	2 & 3	2 & 3	1 & 2
233MHz	83MHz	2x	1 & 2	2 & 3	1 & 2	2 & 3	1 & 2	1 & 2

Note: Pins designated should be in the closed position.

CPU SPEED SELECTION (IBM 6X86MX)

CPU speed	Clock speed	Multiplier	JP5	JP6	JP7	JP8	JP9	JP10
166MHz	66MHz	2x	1 & 2	2 & 3	2 & 3	2 & 3	1 & 2	1 & 2
200MHz	66MHz	2.5x	1 & 2	2 & 3	2 & 3	2 & 3	2 & 3	1 & 2
200MHz	75MHz	2x	1 & 2	1 & 2	2 & 3	2 & 3	1 & 2	1 & 2
233MHz	75MHz	2.5x	1 & 2	1 & 2	2 & 3	2 & 3	2 & 3	1 & 2
233MHz	83MHz	2x	1 & 2	2 & 3	1 & 2	2 & 3	1 & 2	1 & 2

Note: Pins designated should be in the closed position.

CPU SPEED SELECTION (CX MII)

CPU speed	Clock speed	Multiplier	JP5	JP6	JP7	JP8	JP9	JP10
300MHz	66MHz	3.5x	1 & 2	2 & 3	2 & 3	1 & 2	1 & 2	1 & 2
300MHz	75MHz	3x	1 & 2	1 & 2	2 & 3	1 & 2	2 & 3	1 & 2

Note: Pins designated should be in the closed position.

CPU SPEED SELECTION (IBM MII)

CPU speed	Clock speed	Multiplier	JP5	JP6	JP7	JP8	JP9	JP10
-----------	-------------	------------	-----	-----	-----	-----	-----	------

300MHz	66MHz	3.5x	1 & 2	2 & 3	2 & 3	1 & 2	1 & 2	1 & 2
300MHz	75MHz	3x	1 & 2	1 & 2	2 & 3	1 & 2	2 & 3	1 & 2

Note: Pins designated should be in the closed position.

CPU SPEED SELECTION (IDT C6)

CPU speed	Clock speed	Multiplier	JP5	JP6	JP7	JP8	JP9	JP10
200MHz	66MHz	3x	1 & 2	2 & 3	2 & 3	1 & 2	2 & 3	1 & 2
225MHz	75MHz	3x	1 & 2	1 & 2	2 & 3	1 & 2	2 & 3	1 & 2

Note: Pins designated should be in the closed position.

CPU SPEED SELECTION (AM K5)

CPU speed	Clock speed	Multiplier	JP5	JP6	JP7	JP8	JP9	JP10
166MHz	66MHz	2.5x	1 & 2	2 & 3	2 & 3	2 & 3	2 & 3	1 & 2

Note: Pins designated should be in the closed position.

CPU SPEED SELECTION (AM K6)

CPU speed	Clock speed	Multiplier	JP5	JP6	JP7	JP8	JP9	JP10
166MHz	66MHz	2.5x	1 & 2	2 & 3	2 & 3	2 & 3	2 & 3	1 & 2
200MHz	66MHz	3x	1 & 2	2 & 3	2 & 3	1 & 2	2 & 3	1 & 2
233MHz	66MHz	3.5x	1 & 2	2 & 3	2 & 3	1 & 2	1 & 2	1 & 2
266MHz	66MHz	4x	1 & 2	2 & 3	2 & 3	2 & 3	1 & 2	2 & 3
300MHz	66MHz	4.5x	1 & 2	2 & 3	2 & 3	2 & 3	2 & 3	2 & 3

Note: Pins designated should be in the closed position.

CPU SPEED SELECTION (AM K6-2)

CPU speed	Clock speed	Multiplier	JP5	JP6	JP7	JP8	JP9	JP10
266MHz	66MHz	4x	1 & 2	2 & 3	2 & 3	2 & 3	1 & 2	2 & 3

300MHz	100MHz	3x	1 & 2	1 & 2	1 & 2	1 & 2	2 & 3	1 & 2
--------	--------	----	-------	-------	-------	-------	-------	-------

Note: Pins designated should be in the closed position.

CPU SPEED SELECTION (INTEL)

CPU speed	Clock speed	Multiplier	JP5	JP6	JP7	JP8	JP9	JP10
133MHz	66MHz	2x	1 & 2	2 & 3	2 & 3	2 & 3	1 & 2	1 & 2
166MHz	66MHz	2.5x	1 & 2	2 & 3	2 & 3	2 & 3	2 & 3	1 & 2
200MHz	66MHz	3x	1 & 2	2 & 3	2 & 3	1 & 2	2 & 3	1 & 2

Note: Pins designated should be in the closed position.

CPU SPEED SELECTION (INTEL MMX)

CPU speed	Clock speed	Multiplier	JP5	JP6	JP7	JP8	JP9	JP10
166MHz	66MHz	2.5x	1 & 2	2 & 3	2 & 3	2 & 3	2 & 3	1 & 2
200MHz	66MHz	3x	1 & 2	2 & 3	2 & 3	1 & 2	2 & 3	1 & 2
233MHz	66MHz	3.5x	1 & 2	2 & 3	2 & 3	1 & 2	1 & 2	1 & 2

Note: Pins designated should be in the closed position.

CPU VOLTAGE SELECTION

Voltage	JP4
2.2v	Pins 3 & 4 closed
2.8v	Pins 7 & 8 closed
2.9v	Pins 1 & 2, 7 & 8 closed
3.2v	Pins 5 & 6, 7 & 8 closed
3.3v	Pins 1 & 2, 5 & 6, 7 & 8 closed
3.5v	Pins 1 & 2, 3 & 4, 5 & 6, 7 & 8 closed