



# Zip 100MB IDE Internal Drive

---

*User's Guide*

OPTIONS  
*by IBM*

**Note:** If you are using this product in the United States, Canada, or Puerto Rico, be sure to read the information under Appendix C, “Product Warranty and Notices” on page 3-13 before using this information and the product it supports.

*For all other countries, the warranty terms and conditions applicable in the country of purchase are available from IBM or your reseller.*

### **First Edition (September 1998)**

**The following paragraph does not apply to the United Kingdom or any country where such provisions are inconsistent with local law:** INTERNATIONAL BUSINESS MACHINES CORPORATION PROVIDES THIS PUBLICATION “AS IS” WITHOUT WARRANTY OF ANY KIND, EITHER EXPRESS OR IMPLIED, INCLUDING, BUT NOT LIMITED TO, THE IMPLIED WARRANTIES OF MERCHANTABILITY OR FITNESS FOR A PARTICULAR PURPOSE. Some states do not allow disclaimer of express or implied warranties in certain transactions, therefore, this statement may not apply to you.

This publication could include technical inaccuracies or typographical errors. Changes are periodically made to the information herein; these changes will be incorporated in new editions of the publication. IBM may make improvements and/or changes in the product(s) and/or the program(s) described in this publication at any time.

This publication was developed for products and services offered in the United States of America. IBM may not offer the products, services, or features discussed in this document in other countries, and the information is subject to change without notice. Consult your local IBM representative for information on the products, services, and features available in your area.

Requests for technical information about IBM products should be made to your IBM reseller or IBM marketing representative.

**Copyright International Business Machines Corporation 1998. All rights reserved.**

Note to U.S. Government Users — Documentation related to restricted rights — Use, duplication or disclosure is subject to restrictions set forth in GSA ADP Schedule Contract with IBM Corp.

## *Contents*

<b>Safety: Read First</b> . . . . .	v
<b>Product Registration</b> . . . . .	vi
<b>About This Book</b> . . . . .	vi

---

<b>Part 1: Quick Installation Guide</b> . . . . .	1-1
---	-----

---

<b>Part 2: User's Guide</b> . . . . .	2-1
---------------------------------------	-----

<b>Introduction</b> . . . . .	2-1	<b>Using the Zip IDE Drive and Zip Diskettes</b> . . . . .	2-9
<b>Installation Requirements</b> . . . . .	2-1	Formatting Zip Diskettes . . . . .	2-10
<b>Installing the Drive</b> . . . . .	2-2	Transferring Files to a Zip 100 MB Diskette . . . . .	2-10
<b>Installing the Zip Drive Software</b> . . . . .	2-7	Copying Zip Diskettes Using Copy Machine . . . . .	2-11
Installing the Zip Software for Windows 98, Windows 95, or Windows NT . . . . .	2-7	Read/Write-Protecting Zip Diskettes . . . . .	2-11
Installing the Zip Software for Windows 3.1 . . . . .	2-8	Reducing Power Consumption When Using Zip Diskettes . . . . .	2-11
Installing the Zip Software for OS/2 Version 4 . . . . .	2-8	Removing a Zip Diskette during a Power Failure . . . . .	2-12
Installing the Zip Software for DOS Version 5.0 or Higher . . . . .	2-8		
<b>Installing Other Applications on the Drive</b> . . . . .	2-9		

---

**Part 3: Appendixes** . . . . . 3-1

**Appendix A. Safety Information** . . . . . 3-1

**Appendix B. Help and Service Information** . . . . . 3-11

Step 1: Problem Solving . . . . . 3-11

Step 2: Preparing for the Call . . . . . 3-12

Step 3: Placing the Call to IBM . . . . . 3-12

**Appendix C. Product Warranty and Notices** . . . . . 3-13

Product Warranty . . . . . 3-13

Notices . . . . . 3-15

Trademarks . . . . . 3-16

Electronic Emission Notices . . . . . 3-16

## Safety: Read First



**CAUTION:** Read the Safety Information in the Appendix, page 3-1, before installing this product.

**Bitte beachten:** Vor der Installation dieses Produkts bitte die Sicherheitsinformationen im Anhang (Seite 3-1) durchlesen.

**ATTENTION:** Lire les Consignes de Sécurité en Annexe, page 3-1, avant d'installer ce produit.

**Precaución:** Antes de instalar este producto, lea la información sobre seguridad que aparece en el apéndice, páginas 3 a 1.

**注意:** この製品をインストールする前に、付録ページ 3-1 の安全に関する表示をお読み下さい。

**ATTENZIONE:** Prima di procedere all'installazione di questo dispositivo, leggere le Informazioni sulla sicurezza nell'Appendice a

**ADVERTÊNCIA:** Leia a informação sobre segurança no Apêndice, página 3-1, antes de instalar este produto.

**OPOZORNĚNÍ:** Před instalací tohoto výrobku si přečtěte Informace o bezpečnosti v Dodatku, str. 3-1.

**BEMÆRK:** Læs sikkerhedsinformationen i tillægget, side 3-1, før du installerer dette produkt.

**LET OP:** Voordat dit produkt wordt geïnstalleerd dient de informatie over veiligheid in de bijlage op pagina 3-1 gelezen te worden.

**ATTENTION:** Avant d'installer ce produit, veuillez lire les renseignements en matière de sécurité à la page 3-1 de l'Annexe.

**VAROITUS:** Lue liitteen sivulla 3-1 olevat turvallisuusohjeet, ennen tämän laitteen asentamista.

**זהירות:** קרא את הוראות הבטיחות המופיעות בנספח, עמ' 3-1, לפני התקנת מכשיר זה.

**FIGYELMEZTETÉS:** Mielőtt beszerelné a terméket, olvassa el a függelék 3-1 oldalán található biztonsági információkat.

**주의:** 본 제품을 설치하기 전에 부록의 3쪽 1항에 있는 안전 수칙을 숙독한다.

**ADVARSEL:** Les informasjonen om sikkerhet i Appendiks, side 3-1, før du installerer dette produktet.

**UWAGA:** Przed zainstalowaniem tego wyrobu należy przeczytać informację dotyczącą bezpieczeństwa w Załączniku na str. 3-1.

**CUIDADO:** Leia as Informações de Segurança no Anexo, página 3-1, antes de instalar este produto.

**小心:** 請在安裝本產品之前仔細閱讀3-1頁附錄中的安全信息。

**Opozorilo:** Upoštevajte varnostna obvestila v dodatku, stran 3-1., preden napravo instalirate.

**WARNING:** Läs säkerhetsinformationen i bilagan, sid. 3-1 innan du installerar denna produkt.

## *Product Registration*

Thank you for purchasing OPTIONS by IBM. Please take a few moments to register your product and provide us with information that will help IBM to better serve you in the future. Your feedback is valuable to us in developing products and services that are important to you, as well as in developing better ways to communicate with you. Register your option on the IBM Web site at:

<http://www.pc.ibm.com/register>

IBM will send you information and updates on your registered product unless you indicate on the Web site questionnaire that you do not want to receive further information.

## *About This Book*

This manual contains information on the Zip 100 MB IDE Internal Drive. The manual is divided into the following parts:

- Part 1:** Abbreviated installation instructions and usage information in the following languages: English, German, French, Spanish, Italian, Brazilian Portuguese, and Japanese
- Part 2:** Detailed information on installation, operation, and problem-solving
- Part 3:** Safety information, product specifications, help and service information, and product warranty and notices

<p><b>Note:</b> The illustrations in this manual might be slightly different from your hardware.</p>
--

---

## Part 1: Quick Installation Guide

This section contains abbreviated installation instructions. For more detailed information, go to "Part 2: User's Guide" on page 2-1.

The IBM Zip 100 MB IDE Internal Drive is a 3.5-inch ATAPI (ATA Packet Interface) drive that works only with Zip diskettes, and can be installed only in computers that use the AT attachment/integrated drive electronics (ATA/IDE) architecture. You can conserve space on your hard disk drive by using your Zip IDE drive to store and organize storage-intensive files on Zip 100 MB<sup>1</sup> diskettes. Zip 100 MB diskettes can easily hold large-capacity files that contain multimedia, imaging, transaction processing, or databases. The Zip IDE drive and Zip diskettes are supported by Microsoft Windows 98, Windows 95, Windows NT, Windows 3.1, OS/2 Version 4 and DOS Version 5.0 or higher.

In addition to this User's Guide, your option package contains:

- Zip 100 MB IDE internal drive
- Zip Tools CD-ROM
- IDE cable
- Accessory kit (mounting screws)
- Tower and desktop bezels

Contact your place of purchase if parts are missing or damaged. Be sure to retain your proof of purchase. It might be required to receive warranty service.

Follow these steps to install the Zip 100 MB IDE internal drive in your computer.

---

### Step 1. Opening the Computer

1. Turn off the computer and all attached devices.
2. Unplug the cables from the power outlets for your computer and all attached devices.

It is now safe to open your computer.

For specific information about opening your computer, see the documentation that comes with the computer.

---

<sup>1</sup> MB means 1 000 000 bytes.

---

## Step 2. Unpacking the Drive

Follow these steps when you unpack your drive.

1. Do not open the antistatic bag until you are ready to install the drive. Static electricity can damage the drive and other computer components.
2. Touch your hand and the inner conductive surface of the antistatic bag containing the drive to an unpainted metal surface on the computer for two seconds. This drains static electricity from the bag and your body.
3. Before handling the drive, ground yourself by touching an unpainted surface on the computer. Ground yourself again after leaving and returning to your work area.
4. Always handle the drive by its edges. Do not touch any exposed printed circuitry, components or connector pins.
5. While installing the drive, avoid all unnecessary handling. Rough handling can damage the heads, rotating disks, and bearings inside the drive housing.
6. If you must put the drive down, place the antistatic bag on a flat padded surface, such as a magazine, and place the drive on the bag with the component side facing up.
7. Do not insert a Zip diskette when the drive power is off.

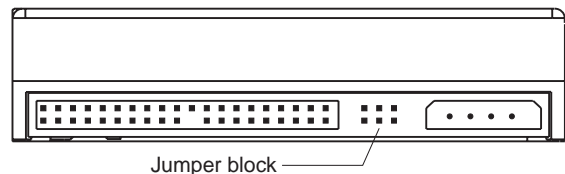
---

## Step 3. Setting the Configuration Jumpers

You can configure your Zip IDE drive as Slave, Master, or Cable Select.

**Note:** The Cable Select configuration does not apply to IBM computers. If you are using an IBM computer, disregard the Cable Select information below.

The jumper setting configurations for your drive are shown in the following diagram:



■ ■ ■ Slave  
■ ■ ■ (Factory Setting)

■ ■ ● Master

● ■ ■ Cable Select



Use the following guidelines to determine the correct configuration for your Zip IDE drive:

#### **Slave**

The Zip IDE drive comes configured as a Slave so that you can install it as a second drive on an IDE connection when the first drive is a Master. If there is one drive connected to the cable before the Zip IDE drive is installed, the first drive is probably configured as a Master. However, some IDE drives require a configuration other than Master when a second drive is connected to the IDE interface cable. Also, many CD-ROM drives will not support a Slave drive. If you connect the Zip IDE drive to the same IDE interface cable as a CD-ROM drive, you might need to configure the Zip IDE drive as the Master and the CD-ROM drive as the Slave.

Refer to the documentation that came with your existing IDE drive for jumper setting information.

#### **Master**

Configure the Zip IDE drive as a Master if you are installing the Zip drive as the only drive on the IDE cable, or if the Zip IDE drive will be one of two drives connected to the cable, and the other drive is configured as a Slave. A Zip IDE drive that is configured as a Master will support a drive (a second Zip IDE drive, an IDE hard disk drive, or a CD-ROM drive) that is configured as a Slave.

#### **Cable Select**

**Note:** The Cable Select configuration does not apply to IBM computers. If you are using an IBM computer system, disregard the Cable Select information below.

Some systems use special ATA cables with two wires reversed in the device connectors to allow the drives to be ordered by the cable rather than by the jumper position. The Cable Select position is to be used only for systems equipped with these special cables. See the documentation that comes with your computer to determine if your ATA adapter requires you to place the jumpers in the Cable Select position.

If you place the jumpers in the Cable Select position, the IDE cable automatically assigns the Master and Slave settings based on the position of the drive on the cable. You must use the Cable Select setting for this cabling system whether the Zip IDE drive is the only drive or the second drive connected to the cable. The drive closest to the IDE controller is automatically the Master drive. Any other devices on the IDE cable must also be set to Cable Select.

#### **What to Do Next**

If you are installing the drive in a 3.5-inch bay, go to “Step 5. Mounting the Drive in the Bay” on page 1-4.

If you are installing the drive in a 5.25-inch bay, you must purchase a 3.5-inch to 5.25-inch conversion kit (not included with this option) from a commercial dealer. Then, continue with “Step 4. Preparing the Drive for a 5.25-inch Bay” on page 1-4.

---

#### Step 4. Preparing the Drive for a 5.25-inch Bay

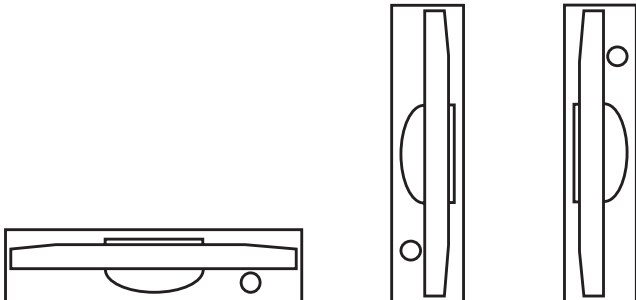
You must use a commercially available 3.5-inch to 5.25-inch conversion kit to install the Zip IDE drive in a 5.25-inch bay. See the documentation that comes with your conversion kit for directions on installing the drive in a 5.25-inch bay.

---

#### Step 5. Mounting the Drive in the Bay

**Attention:** Be sure to use the mounting screws that come with your drive. You might damage your drive if you use mounting screws that are too long.

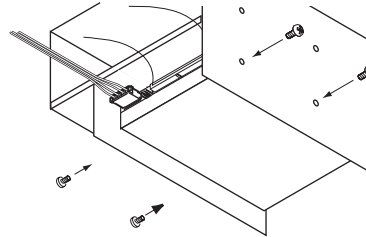
You can mount the drive horizontally or vertically in your computer.



To mount the drive in the bay:

1. Locate a vacant drive bay and remove the panel cover.

2. Slide the drive into the bay.
3. Align the front of the Zip drive with other drives installed in the computer.
4. Align the drive-bay screw holes with the threaded holes in the drive housing or expansion brackets. If there is not clear access to the drive-bay screw holes, refer to the documentation that came with your computer for additional instructions.
5. Hand thread the screws to lightly secure the drive in the bay, as shown.



(If the drive is held in place securely by rails, you will not need to use the mounting screws.)

6. Check the drive alignment and tighten the screws.  
*Do not overtighten.*

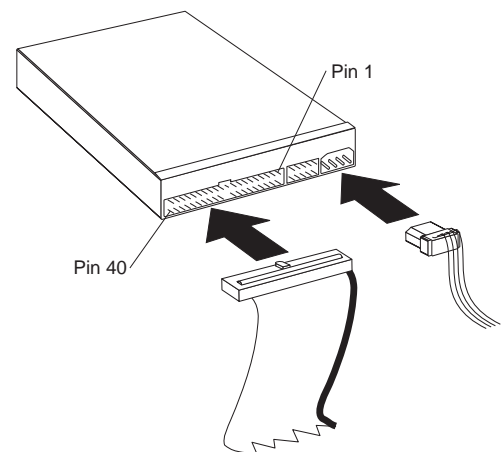
---

## Step 6. Connecting the Drive and the Cables

Connect the drive to an available 40-pin connector on the IDE interface cable. The interface cable can have up to three connectors. For the best signal quality when you are connecting only one device on the IDE cable, connect one end of the cable to the IDE port and connect the device to the connector on the other end of the cable. Do not use the middle connector.

If you are connecting two devices on the IDE cable, connect one end of the cable to the IDE port and connect the Master and Slave devices to the remaining connectors on the other end. Many computers have two cables for attaching up to four ATA devices. For best performance, attach fast devices (hard disk drives) on one cable and slower devices (CD-ROM drives, tape drives or removable media drives) on the second cable. If you must move a slower device to a second cable, see your computer manual for information on correctly configuring the device.

Connect an available DC power-cable connector to the four-pin DC power connector on the Zip IDE drive, as shown.



The cable connector is keyed and fits only one way. Be sure that the cables will not be pinched or crowded by the computer cover and that all other cable and power connections are secure.

---

## Step 7. Completing the Installation of the Drive

To complete the installation of the drive:

1. Verify that the drive is securely mounted and the cables are firmly attached.
2. Verify that the cables do not interfere with the computer cover and do not block the power-supply fan blades or air-flow paths.
3. Reinstall the computer cover.

4. Reconnect all devices. Make sure that the keyboard, mouse, and monitor cables are firmly connected.
5. Reconnect all AC power cords.

---

## Step 8. Installing the Zip Drive Software

To install the Zip drive device driver and the Zip Tools software for Windows 98, Windows 95, or Windows NT:

1. Turn on your computer and start your operating system.
2. Insert the Zip Tools CD-ROM into your computer CD-ROM drive.
3. If the Zip Tools installation program does not start automatically, click on **Start**, select **Run**, type **x:\install** where **x** is the letter for the CD-ROM drive and click on **OK**.
4. Click on the icon for your preferred language.
5. Click on **Install Iomega software** and follow the on-screen instructions.
6. If the program restarts your operating system before the installation of the Zip Tools software, run Install again from the installation CD-ROM after Windows restarts.

To install the Zip drive device driver and Zip Tools software for Windows 3.1:

1. Turn on your computer.
2. Insert the Zip Tools CD-ROM into your computer CD-ROM drive.
3. Start Windows.

4. In **Program Manager**, select **File**, then **Run**.
5. In the command line box, type **x:\english\w31stuff\setup** where **x** is the letter of your CD-ROM drive.
6. Click on **OK** or press Enter.

To install the Zip drive device driver and Zip Tools software for OS/2 Version 4:

1. Go to the OS/2 Device Driver Web (**OS/2 Device Driver Pak On-Line**) page at <http://service.ibm.com/os2ddpak/index.htm>.
2. Complete the on-screen license agreement.
3. Click on **Removable Disks**.
4. Click on **Iomega**.
5. Click on **Iomega Zip ATA Drive**.
6. Click on **IDEDASD.EXE** to download the OS/2 device driver for the Zip drive.
7. Run the IDEDASD.EXE self-extracting file.
8. Follow installation instructions contained in the README.TXT file.

To install the Zip drive device driver and Zip Tools software for DOS Version 5.0 or higher:

1. Turn on your computer.
2. Insert the Zip Tools CD-ROM into your computer CD-ROM drive.

3. Type **x:\language\DOSSTUFF\install** at the DOS prompt where **x** is the letter of your CD-ROM drive, and *language* is the language you prefer for on-screen instructions.
4. Select **Do Express Install** in the *SCSI* installation utility program.
5. Restart the computer after the software installation completes.

For detailed information on using your Zip IDE drive and Zip 100 MB diskettes, see “Using the Zip IDE Drive and Zip Diskettes” on page 2-9.

## ***Quick Installation Guide (Translated)***

The IBM Zip 100 MB IDE Internal Drive is a 3.5-inch ATAPI (ATA Packet Interface) drive that works only with Zip diskettes, and can be installed only in computers that use the AT attachment/integrated drive electronics (ATA/IDE) architecture. You can conserve space on your hard disk drive by using your Zip IDE drive to store and organize storage-intensive files on Zip 100 MB<sup>2</sup> diskettes. Zip 100 MB diskettes can easily hold large-capacity files that contain multimedia, imaging, transaction processing, or databases. The Zip IDE drive and Zip diskettes are supported by Microsoft Windows 98, Windows 95, Windows NT, Windows 3.1, OS/2 Version 4 and DOS Version 5.0 or higher.

In addition to this User's Guide, your option package contains:

- Zip 100 MB IDE internal drive
- Zip Tools CD-ROM
- IDE cable
- Accessory kit (mounting screws)
- Tower and desktop bezels

Contact your place of purchase if parts are missing or damaged. Be sure to retain your proof of purchase. It might be required to receive warranty service.

Follow these steps to install the Zip 100 MB IDE internal drive in your computer.

---

### **Step 1. Opening the Computer**

1. Turn off the computer and all attached devices.
2. Unplug the cables from the power outlets for your computer and all attached devices.

It is now safe to open your computer.

For specific information about opening your computer, see the documentation that comes with the computer.

---

### **Step 2. Unpacking the Drive**

Follow these steps when you unpack your drive.

1. Do not open the antistatic bag until you are ready to install the drive. Static electricity can damage the drive and other computer components.
2. Touch your hand and the inner conductive surface of the antistatic bag containing the drive to an unpainted metal surface on the computer for two seconds. This drains static electricity from the bag and your body.

---

<sup>2</sup> MB means 1 000 000 bytes.

3. Before handling the drive, ground yourself by touching an unpainted surface on the computer. Ground yourself again after leaving and returning to your work area.
4. Always handle the drive by its edges. Do not touch any exposed printed circuitry, components or connector pins.
5. While installing the drive, avoid all unnecessary handling. Rough handling can damage the heads, rotating disks, and bearings inside the drive housing.
6. If you must put the drive down, place the antistatic bag on a flat padded surface, such as a magazine, and place the drive on the bag with the component side facing up.
7. Do not insert a Zip diskette when the drive power is off.

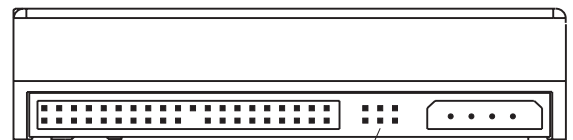
---

### Step 3. Setting the Configuration Jumpers

You can configure your Zip IDE drive as Slave, Master, or Cable Select.

**Note:** The Cable Select configuration does not apply to IBM computers. If you are using an IBM computer system, disregard the Cable Select information below.

The jumper setting configurations for your drive are shown in the following diagram:



■ ■ ■ Slave  
 (Factory Setting)

■ ■ ● Master

● ● ■ Cable Select

Use the following guidelines to determine the correct configuration for your Zip IDE drive:

#### **Slave**

The Zip IDE drive comes configured as a Slave so that you can install it as a second drive on an IDE connection when the first drive is a Master. If there is one drive connected to the cable before the Zip IDE drive is installed, the first drive is probably configured as a Master. However, some IDE drives require a configuration other than Master when a second drive is connected to the IDE interface cable. Also, many CD-ROM drives will not support a Slave drive. If you connect the Zip IDE drive to the same IDE interface cable as a CD-ROM drive, you might need to configure the Zip IDE drive as the Master and the CD-ROM drive as the Slave.

Refer to the documentation that came with your existing IDE drive for jumper setting information.

#### **Master**

Configure the Zip IDE drive as a Master if you are installing the Zip drive as the only drive on the IDE cable, or if the Zip IDE drive will be one of two drives connected to the cable, and the other drive is configured as a Slave. A Zip IDE drive that is configured as a Master will support a drive (a second Zip IDE drive, an IDE hard disk drive, or a CD-ROM drive) that is configured as a Slave.

#### **Cable Select**

**Note:** The Cable Select configuration does not apply to IBM computers. If you are using an IBM computer system, disregard the Cable Select information below.

Some systems use special ATA cables with two wires reversed in the device connectors to allow the drives to be ordered by the cable rather than by the jumper position. The Cable Select position is to be used only for systems equipped with these special cables. See the documentation that comes with your computer to determine if your ATA adapter requires you to place the jumpers in the Cable Select position.

If you place the jumpers in the Cable Select position, the IDE cable automatically assigns the Master and Slave settings based on the position of the drive on the cable. You must use the Cable Select setting for this cabling system whether the Zip IDE drive is the only drive or the second drive connected to the cable. The drive closest to the IDE controller is automatically the Master drive. Any other devices on the IDE cable must also be set to Cable Select.

#### **What to Do Next**

If you are installing the drive in a 3.5-inch bay, go to “Step 5. Mounting the Drive in the Bay.”

If you are installing the drive in a 5.25-inch bay, you must purchase a 3.5-inch to 5.25-inch conversion kit (not included with this option) from a commercial dealer. Then, continue with “Step 4. Preparing the Drive for a 5.25-inch Bay.”



---

#### Step 4. Preparing the Drive for a 5.25-inch Bay

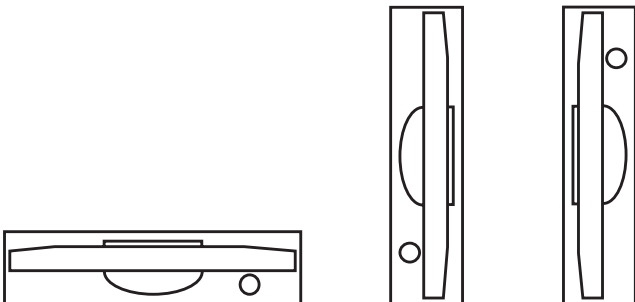
You must use a commercially available 3.5-inch to 5.25-inch conversion kit to install the Zip IDE drive in a 5.25-inch bay. See the documentation that comes with your conversion kit for directions on installing the drive in a 5.25-inch bay.

---

#### Step 5. Mounting the Drive in the Bay

**Attention:** Be sure to use the mounting screws that come with your drive. You might damage your drive if you use mounting screws that are too long.

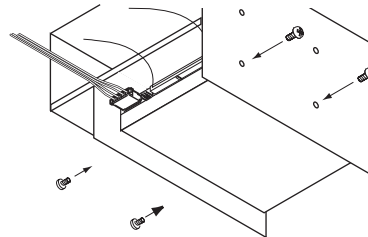
You can mount the drive horizontally or vertically in your computer.



To mount the drive in the bay:

1. Locate a vacant drive bay and remove the panel cover.

2. Slide the drive into the bay.
3. Align the front of the Zip drive with other drives installed in the computer.
4. Align the drive-bay screw holes with the threaded holes in the drive housing or expansion brackets. If there is not clear access to the drive-bay screw holes, refer to the documentation that came with your computer for additional instructions.
5. Hand thread the screws to lightly secure the drive in the bay, as shown.



(If the drive is held in place securely by rails, you will not need to use the mounting screws.)

6. Check the drive alignment and tighten the screws.  
*Do not overtighten.*

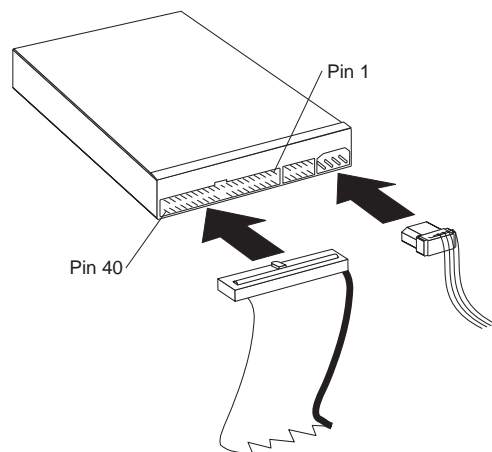
---

## Step 6. Connecting the Drive and the Cables

Connect the drive to an available 40-pin connector on the IDE interface cable. The interface cable can have up to three connectors. For the best signal quality when you are connecting only one device on the IDE cable, connect one end of the cable to the IDE port and connect the device to the connector on the other end of the cable. Do not use the middle connector.

If you are connecting two devices on the IDE cable, connect one end of the cable to the IDE port and connect the Master and Slave devices to the remaining connectors on the other end. Many computers have two cables for attaching up to four ATA devices. For best performance, attach fast devices (hard disk drives) on one cable and slower devices (CD-ROM drives, tape drives or removable media drives) on the second cable. If you must move a slower device to a second cable, see your computer manual for information on correctly configuring the device.

Connect an available DC power-cable connector to the four-pin DC power connector on the Zip IDE drive, as shown.



The cable connector is keyed and fits only one way. Be sure that the cables will not be pinched or crowded by the computer cover and that all other cable and power connections are secure.

---

## Step 7. Completing the Installation of the Drive

To complete the installation of the drive:

1. Verify that the drive is securely mounted and the cables are firmly attached.
2. Verify that the cables do not interfere with the computer cover and do not block the power-supply fan blades or air-flow paths.
3. Reinstall the computer cover.

4. Reconnect all devices. Make sure that the keyboard, mouse, and monitor cables are firmly connected.
5. Reconnect all AC power cords.

---

## Step 8. Installing the Zip Drive Software

To install the Zip drive device driver and the Zip Tools software for Windows 98, Windows 95, or Windows NT:

1. Turn on your computer and start your operating system.
2. Insert the Zip Tools CD-ROM into your computer CD-ROM drive.
3. If the Zip Tools installation program does not start automatically, click on **Start**, select **Run**, type **x:\install** where **x** is the letter for the CD-ROM drive and click on **OK**.
4. Click on the icon for your preferred language.
5. Click on **Install Iomega software** and follow the on-screen instructions.
6. If the program restarts your operating system before the installation of the Zip Tools software, run Install again from the installation CD-ROM after Windows restarts.

To install the Zip drive device driver and Zip Tools software for Windows 3.1:

1. Turn on your computer.
2. Insert the Zip Tools CD-ROM into your computer CD-ROM drive.
3. Start Windows.

4. In **Program Manager**, select **File**, then **Run**.
5. In the command line box, type **x:\english\w31stuff\setup** where **x** is the letter of your CD-ROM drive.
6. Click on **OK** or press Enter.

To install the Zip drive device driver and Zip Tools software for OS/2 Version 4:

1. Go to the OS/2 Device Driver Web (**OS/2 Device Driver Pak On-Line**) page at <http://service.ibm.com/os2ddpak/index.htm>.
2. Complete the on-screen license agreement.
3. Click on **Removable Disks**.
4. Click on **Iomega**.
5. Click on **Iomega Zip ATA Drive**.
6. Click on **IDEDASD.EXE** to download the OS/2 device driver for the Zip drive.
7. Run the IDEDASD.EXE self-extracting file.
8. Follow installation instructions contained in the README.TXT file.

To install the Zip drive device driver and Zip Tools software for DOS Version 5.0 or higher:

1. Turn on your computer.
2. Insert the Zip Tools CD-ROM into your computer CD-ROM drive.

3. Type **x:\language\DOSSTUFF\install** at the DOS prompt where **x** is the letter of your CD-ROM drive, and *language* is the language you prefer for on-screen instructions.
4. Select **Do Express Install** in the *SCSI* installation utility program.
5. Restart the computer after the software installation completes.

---

## Product Registration

Thank you for purchasing OPTIONS by IBM. Please take a few moments to register your product and provide us with information that will help IBM to better serve you in the future. Your feedback is valuable to us in developing products and services that are important to you, as well as in developing better ways to communicate with you. Register your option on the IBM Web site at:

<http://www.pc.ibm.com/register>

IBM will send you information and updates on your registered product unless you indicate on the Web site questionnaire that you do not want to receive further information.

---

## Product Service and Warranty Information

For technical support, support hours, and warranty terms and conditions, see the enclosed inserts, or contact your IBM reseller or IBM marketing representative.

---

## Part 2: User's Guide

### *Introduction*

The IBM Zip 100 MB IDE Internal Drive is a 3.5-inch ATAPI (ATA Packet Interface) drive that works only with Zip diskettes, and can be installed only in computers that use the AT attachment/integrated drive electronics (ATA/IDE) architecture. You can conserve space on your hard disk drive by using your Zip IDE drive to store and organize storage-intensive files on Zip 100 MB<sup>3</sup> diskettes. Zip 100 MB diskettes can easily hold large-capacity files that contain multimedia, imaging, transaction processing, or databases. The Zip IDE drive and Zip diskettes are supported by Microsoft Windows 98, Windows 95, Windows NT, Windows 3.1, OS/2 Version 4 and DOS Version 5.0 or higher.

In addition to this User's Guide, your option package contains:

- Zip 100 MB IDE internal drive
- Zip Tools CD-ROM
- IDE cable
- Accessory kit (mounting screws)
- Tower and desktop bezels

Contact your place of purchase if parts are missing or damaged. Be sure to retain your proof of purchase. It might be required to receive warranty service.

### *Installation Requirements*

To install the Zip IDE drive you must have:

#### **Documentation**

The documentation that comes with your computer and operating system.

#### **IDE bus adapter**

Your computer must have an IDE port on the system board or on an IDE bus adapter. If the interface cable connectors in your computer have 40 pins, your computer uses the IDE architecture. If you are not sure about your IDE bus adapter, see the documentation that comes with your computer.

#### **IDE cables and connectors**

The IDE cables connect the IDE port on the system board, or on an IDE adapter, to your IDE storage devices. IDE storage devices are hard disk drives, CD-ROM drives, and tape drives.

---

<sup>3</sup> MB means 1 000 000 bytes.

If your computer has two IDE ports (one IDE cable on each port), you can attach up to four devices (two devices on each cable).

**Note:** Not all cables have connections for two IDE devices.

### Mounting brackets and tools

Most computers have 3.5-inch and 5.25-inch drive bays. The Zip IDE drive you are installing is designed for a 3.5-inch bay, but it can be adapted to a 5.25-inch bay. Common bay dimensions are:

- 3.5-inch—10.2 cm x 15.2 cm x 2.6 cm (4 in. x 6 in. x 1 in.)
- 5.25-inch—15.2 cm x 20.3 cm x 4.1 cm (6 in. x 8 in. x 1.63 in.)

You might need special mounting hardware for some installations. For more information on mounting a drive in your computer, contact your dealer or refer to the documentation that comes with your computer.

You will need a flat-blade and a Phillips-head screwdriver.

## *Installing the Drive*

The instructions in this section are general guidelines that apply to most computers. For specific information on installing a drive in your computer, see the documentation that comes with your computer.

---

### Step 1. Opening Your Computer

Before opening your computer, complete the following steps:

1. Turn off the computer and all attached devices.
2. Unplug the cables from the power outlets for your computer and all attached devices.

It is now safe to open your computer. Locate a vacant drive bay and remove the panel cover. For specific information about opening your computer, see the documentation that comes with the computer.

---

### Step 2. Unpacking the Drive

Use the following procedure to unpack and handle the drive. To prevent damage and static-electricity discharge, limit handling to a minimum.

1. Do not open the antistatic bag until you are ready to install the drive. Static electricity can damage the drive and other computer components.
2. Touch your hand and the inner conductive surface of the antistatic

bag containing the drive to an unpainted metal surface on the computer for two seconds. This drains static electricity from the bag and your body.

3. Before handling the drive, ground yourself by touching an unpainted surface on the computer. Ground yourself again after leaving and returning to your work area.
4. Always handle the drive by its edges. Do not touch any exposed printed circuitry, components or connector pins.
5. While installing the drive, avoid all unnecessary handling. Rough handling can damage the heads, rotating disks, and bearings inside the drive housing.
6. If you must put the drive down, place the antistatic bag on a flat padded surface, such as a magazine, and place the drive on the bag with the component side facing up.
7. Do not insert a Zip diskette when the drive power is off.

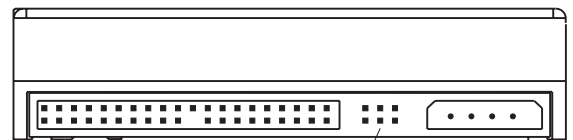
---

### Step 3. Setting the Configuration Jumpers

You can configure your Zip IDE drive as Slave, Master or Cable Select.

**Note:** The Cable Select configuration does not apply to IBM computers. If you are using an IBM computer, disregard the Cable Select information below.

The jumper setting configurations for your drive are shown in the following diagram:



■ ■ ■ Slave  
 ■ ■ ■ (Factory Setting)

■ ■ ● Master

● ■ ■ Cable Select

Use the following guidelines to determine the correct configuration for your Zip IDE drive:

#### **Slave**

The Zip IDE drive comes set in the Slave configuration so that you can install it as a second drive on an IDE connection when the first drive is configured as a Master. However, the first drive might require a configuration other than Master when you connect an additional drive to the IDE interface cable. For example, many CD-ROM drives will not support a Slave drive. If you connect the Zip IDE drive to the same IDE interface cable as a CD-ROM drive, you might need to configure the Zip IDE drive as the Master and the CD-ROM drive as the Slave.

Refer to the documentation that came with your existing IDE drive to verify the correct jumper settings for your drives.

#### **Master**

Configure the Zip IDE drive as a Master if you are installing the Zip IDE Drive as the only drive on the IDE cable, or if the Zip IDE drive will be one of two drives connected to the cable, and the other drive is configured as a Slave. A Zip IDE drive that is configured as a Master will support a drive that is configured as a Slave (a second Zip IDE drive, an IDE hard disk drive, or a CD-ROM drive).

#### **Cable Select**

**Note:** The Cable Select configuration does not apply to IBM computers. If you are using an IBM computer, disregard the Cable Select information below.

Some systems use special ATA cables with two wires reversed in the device connectors to allow the drives to be ordered by the cable rather than by the jumper position. The Cable Select position is to be used only for systems equipped with these special cables. See the documentation that comes with your computer to determine if your ATA adapter requires you to place the jumpers in the Cable Select position.

If you do not have documentation, look at the IDE interface cable. On a Cable Select system, there is an open connection on one of the wires between the first and second drive connectors. However, if there are no breaks or holes in the interface cable, it is probably not a Cable Select system.

If you place the jumpers in the Cable Select position, the IDE cable automatically assigns the master and slave settings based on the position of the drive on the cable. You must use the Cable Select setting whether the Zip IDE drive is the only drive or the second drive connected to the cable. The drive closest to the IDE controller is automatically the Master drive. Any other devices on the IDE cable must also be set to Cable Select.



## What to Do Next

If you are installing the drive in a 3.5-inch bay, go to “Step 5. Mounting the Drive in the Bay” on page 2-5.

If you are installing the drive in a 5.25-inch bay, you must purchase a 3.5-inch to 5.25-inch conversion kit (not included with this option) from a commercial dealer. Then, continue with “Step 4. Preparing the Drive for a 5.25-inch Bay” on page 2-5.

---

### Step 4. Preparing the Drive for a 5.25-inch Bay

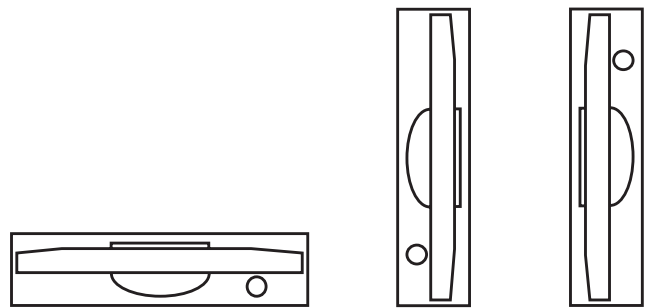
You must use a commercially available 3.5-inch to 5.25-inch conversion kit to install the Zip IDE drive in a 5.25-inch bay. See the documentation that comes with your conversion kit for directions on installing the drive in a 5.25-inch bay.

---

### Step 5. Mounting the Drive in the Bay

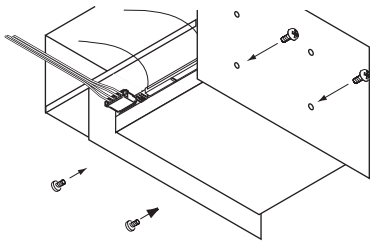
**Attention:** Be sure to use the mounting screws that come with the 3.5-inch Universal Installation kit. You might damage your drive if you use mounting screws that are too long.

You can mount the drive horizontally or vertically in your computer.



To mount the drive in the bay:

1. Locate a vacant drive bay and remove the panel cover.
2. Slide the drive into the bay.
3. Align the front of the Zip drive with other drives installed in the computer.
4. Align the drive-bay screw holes with the threaded holes in the drive housing or expansion brackets. If there is not clear access to the drive-bay screw holes, refer to the documentation that came with your computer for additional instructions.
5. Hand thread the screws to lightly secure the drive in the bay, as shown.



(If the drive is held in place securely by rails, you will not need to use the mounting screws.)

6. Check the drive alignment and tighten the screws.  
*Do not overtighten.*

---

## Step 6. Attaching the Cables to the Drive

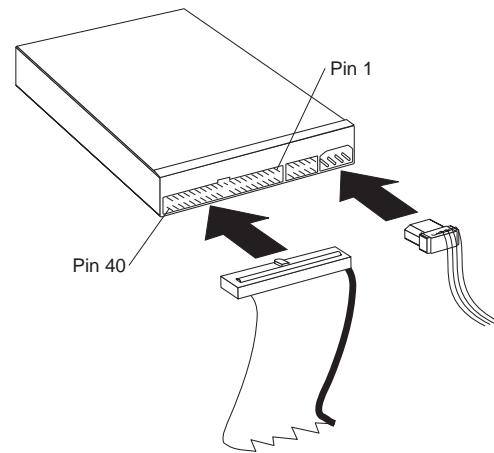
Use the following procedure to attach the cables.

1. Locate a free device connector on the IDE interface cable in your computer.

The connector on one end and the connector in the middle connect to the storage devices. The other end of the cable connects to the IDE port. The IDE port can be on the computer system board or on an adapter installed in an expansion slot. For the best signal quality when you have only one device on the IDE cable, connect the device to the connector on the end opposite the IDE port.

2. Attach an available connector on the interface cable to the connector on the drive, as shown. Be sure that the colored wire

is connected to pin 1 on the drive connector and is the closest wire to the four-pin DC power connector.



3. Find an unused power connector on a cable coming from the computer power supply and attach it to the four-pin DC power connector. The power connector is keyed so that it attaches one way only. Do not force it. If the connector does not attach using reasonable pressure, recheck the orientation of the cable connector to the drive connector, and try again.

If all power cables are in use, purchase a DC Y-connector (available at many electronic stores) and split a connection to provide power for more devices.

---

## Step 7. Completing the Installation of the Drive

To complete the installation of the drive:

1. Verify that the drive is securely mounted and the cables are firmly attached.
2. Verify that the cables do not interfere with the computer cover and do not block the power-supply fan blades or air-flow paths.
3. Reinstall the computer cover.
4. Reconnect all devices. Make sure that the keyboard, mouse, and monitor cables are firmly connected.
5. Reconnect all AC power cords.

## *Installing the Zip Drive Software*

You must install the Zip drive device driver from the Zip Tools CD-ROM so that you can use the utility programs that allow the Zip IDE drive to work with your computer.

---

### **Installing the Zip Software for Windows 98, Windows 95, or Windows NT**

To install the Zip drive device driver and Tools software for Windows 98, Windows 95, or Windows NT:

1. Turn on your computer and start your operating system.
2. Insert the Zip Tools CD-ROM into your computer CD-ROM drive.
3. If the Zip Tools installation program does not start automatically, click on **Start**, select **Run**, type **x:\install** where **x** is the drive letter for the CD-ROM drive and click on **OK**.
4. Click on the icon for your preferred language.
5. Click on **Install Iomega software** and follow the on-screen instructions.
6. If the program restarts your operating system before the installation of the Zip Tools software, run Install again from the installation CD-ROM after Windows restarts.

---

### Installing the Zip Software for Windows 3.1

To install the Zip drive device driver and Tools software for Windows 3.1:

1. Turn on your computer.
2. Insert the Zip Tools CD-ROM into your computer CD-ROM drive.
3. Start Windows.
4. In **Program Manager**, select **File**, then **Run**.
5. In the command line box, type **x:\english\w31stuff\setup** where **x** is the letter of your CD-ROM drive.
6. Click on **OK** or press Enter.

---

### Installing the Zip Software for OS/2 Version 4

To install the Zip drive device driver and Zip Tools software for OS/2 Version 4:

1. Go to the OS/2 Device Driver Web (**OS/2 Device Driver Pak On-Line**) page at <http://service.ibm.com/os2ddpak/index.htm>.
2. Complete the on-screen license agreement.
3. Click on **Removable Disks**.
4. Click on **Iomega**.
5. Click on **Iomega Zip ATA Drive**.

6. Click on **IDEDASD.EXE** to download the OS/2 device driver for the Zip drive.
7. Run the IDEDASD.EXE self-extracting file.
8. Follow installation instructions in the README.TXT file.

---

### Installing the Zip Software for DOS Version 5.0 or Higher

To install the Zip drive device driver and Tools software for DOS Version 5.0 or higher:

1. Turn on your computer.
2. Insert the Zip Tools CD-ROM into your computer CD-ROM drive.
3. Type **x:\language\DOSSTUFF\install** at the DOS prompt where **x** is the letter of your CD-ROM drive, and *language* is the language you prefer for on-screen instructions.
4. Select **Do Express Install** in the SCSI installation utility program.
5. Restart the computer after the software installation completes.

## *Installing Other Applications on the Drive*

IBM does not support any software for your Zip drive that was not included in the option package.

Some applications and games can be installed only on a hard disk. To install these programs on the Zip IDE drive, you must first double-click on the Zip drive icon in **My Computer** or **Windows Explorer**, and then select **Make Nonremovable**. Your computer will now recognize your Zip IDE drive as a hard disk drive and you can install your application. After the software installation completes, double-click on the Zip drive icon and select **Make Removable** to restore disk removability.

Some software programs will display **System Error** on the computer screen if there is no diskette in your Zip IDE drive. Simply insert a Zip diskette (not included) in the Zip drive to continue the software installation.

## *Using the Zip IDE Drive and Zip Diskettes*

**Attention:** You must use Zip 100 MB diskettes (not included) with your Zip IDE drive. You will damage your drive if you use any other kind of diskette.

You can use your Zip drive like any other drive on your computer system. Your Zip drive will have its own drive letter, and you can copy files to and from the Zip drive.

You can use the Zip IDE Drive and Zip diskettes to:

- Conserve hard disk drive space by storing up to 100 MB of data on a Zip diskette
- Transport large amounts of information on Zip diskettes
- Back up and archive files
- Store multimedia files that use large amounts of storage space

**Attention:** You must turn on your computer before inserting or removing a Zip diskette.

## Formatting Zip Diskettes

You must use the format utility program in the Tools folder to format a Zip diskette.

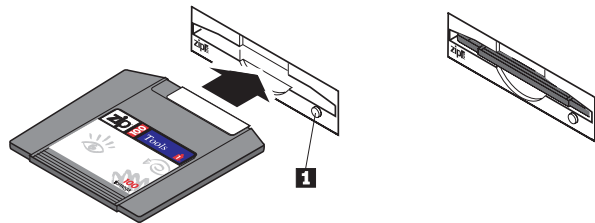
To format a Zip diskette:

1. Insert the Zip diskette in the Zip drive.
2. Go to the **My Computer** window and right-click on the Zip drive icon.
3. Select **Format**.
4. Follow the on-screen instructions.

## Transferring Files to a Zip 100 MB Diskette

To transfer files from your computer to a Zip 100 MB diskette:

1. Insert the Zip 100 MB diskette into the Zip IDE drive, as shown. When you insert a Zip diskette in the drive, the drive-busy light 1 will come on for a moment.



(If the light stays on, push the diskette-eject button to eject the Zip diskette and then reinsert the diskette.)

2. Click on the Zip diskette icon or drive letter.
3. Use the file transfer procedures for your operating system to copy files on your computer to the Zip IDE drive. The Zip drive stores the files on the Zip diskette.

If you are using Windows 98, Windows 95 or Windows NT, you can click on the **1-Step Backup/Restore** icon in your Zip Tools folder to back up data from your hard disk drive to a Zip diskette.

---

## Copying Zip Diskettes Using Copy Machine

**Note:** You cannot use the Windows CopyDisk or DOS DiskCopy utility programs to copy files from Zip diskettes. Instead, you must use the Copy Machine utility program in the Zip Tools folder. Copy Machine copies Zip diskettes using only the Zip IDE drive.

To copy a Zip diskette using Copy Machine:

1. Double-click on the **Copy Machine** icon in your Zip Tools folder.
2. Insert the Zip diskette you want to copy.
3. Follow the on-screen instructions.

For information on additional Copy Machine options, click on the Copy Machine Help button.

---

## Read/Write-Protecting Zip Diskettes

The Tools software included with your Zip drive device driver includes a read/write-protect utility program for Windows that allows you to:

Write-protect a Zip diskette without having to use a mechanical write protect switch.

Assign a password that will be needed to disable write-protect on your Zip diskette.

Read-protect a Zip diskette so that it cannot be read from, or written to, without using an assigned password.

To read/write-protect a Zip diskette in Windows 98 or Windows 95:

1. Double-click on the **My Computer** icon.
2. Read/Write-protect the Zip diskette by right-clicking on the disk icon and choosing the Protect option.  
**Note:** If a Zip diskette is not inserted in the drive, the Protect option will not be available.

Repeat the steps above to remove the read/write-protection.

To read/write-protect a Zip diskette in Windows 3.1:

1. Double-click on the **Tools** icon in the Tools folder.
2. Select **Tools** from the menu and then select **Disk Protect**.

Repeat the steps above to remove the read/write-protection.

---

## Reducing Power Consumption When Using Zip Diskettes

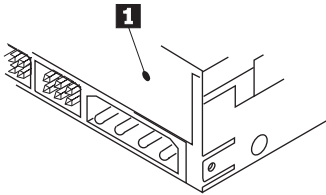
The Zip IDE drive also has an automatic sleep mode that reduces power consumption and prolongs the life of Zip diskettes by spinning down a diskette after 15 minutes of inactivity. The diskette automatically spins up again when you access it. You can adjust the sleep mode time using the Tools software included with your device driver.

---

## Removing a Zip Diskette during a Power Failure

**Attention:** You must turn off your computer and all attached devices before using the emergency diskette-eject hole.

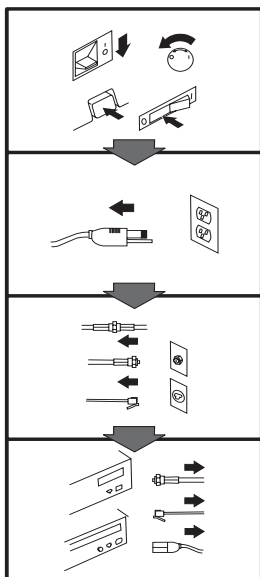
If you must remove a Zip diskette from the drive during a power failure, access the rear of the Zip IDE drive and push a straightened paper clip into the emergency diskette-eject hole 1 that is located just above the power connector, as shown below.



Do not forcibly remove the Zip diskette from the drive. If the diskette does not eject immediately, try the emergency diskette-eject procedure again.



### Appendix A. Safety Information



#### **To Disconnect:**

##### **⚠ Danger:**

Electrical current from power, telephone, and communication cables is hazardous. To avoid shock hazard, disconnect cables as shown before opening the computer covers to install this product. The power cord must be used with a properly grounded outlet.

- Turn Everything OFF.
- First, remove power cord from outlet. (In the U.K., by law, the power cord must be disconnected after the telephone line cable.)
- Remove signal cables from receptacles.
- Remove all cables from devices.

#### **Vor dem Entfernen der Anschlüsse:**

##### **⚠ Vorsicht:**

Befolgen Sie die folgenden Schritte, um gesundheitliche Schäden durch stromführende Telefon- und Verbindungskabel auszuschließen. Um eine Berührungsspannung zu vermeiden, Kabel vor dem Öffnen der Computerabdeckungen bei der Installation dieses Produktes, wie abgebildet, herausziehen. Das Netzkabel darf nur an eine ordnungsgemäß geerdete Steckdose angeschlossen werden.

- Schalten Sie alle Geräte AUS.
- Ziehen Sie zuerst das Netzkabel aus der Steckdose.
- Entfernen Sie die Signalkabel von den Anschlußbuchsen.
- Entfernen Sie alle Kabel von den Geräten.

#### **Précautions de déconnexion**

##### **⚠ Danger:**

Le courant électrique des câbles électriques, téléphoniques et de communication est dangereux. Pour éviter tout risque d'électrocution, déconnectez les câbles comme indiqué avant d'ouvrir les capots de l'ordinateur pour installer ce produit. Il convient d'utiliser le câble d'alimentation avec une prise correctement raccordée à la terre.

- Eteignez tous les appareils.
- Débranchez tout d'abord le câble d'alimentation de la prise de courant. (Au Royaume-Uni, la législation exige que le câble d'alimentation soit débranché après le câble téléphonique.)
- Débranchez les câbles de signalisation des prises femelles.
- Débranchez l'ensemble des câbles des périphériques.

#### **Para desconectarse**

##### **⚠ Peligro:**

La corriente eléctrica procedente de cables de alimentación, teléfono y comunicaciones es peligrosa. Para evitar descargas eléctricas, desconecte los cables tal y como se muestra y abra las cubiertas del ordenador antes de instalar este producto. El cable de alimentación debe utilizarse con una toma debidamente conectada a tierra.

- Desconecte todo.
- En primer lugar, retire el cable de alimentación de la toma. (En el Reino Unido, la legislación determina que el cable de alimentación se desconecte después del cable de línea telefónica.)
- Retire los cables de señal de los receptáculos correspondientes.
- Retire todos los cables de los dispositivos.

取外し時：

**⚠ 危険：**

電源、電話及び通信ケーブルからの電流は危険なものです。電気ショックの危険を避けるために、この製品をインストールするためにコンピューターのカバーを取外す前に、次の順序でケーブルを取外してください。

- すべての電源を切ってください。
- 最初にコンセントから電源コードを取外してください。
- コネクターから通信ケーブルを取外してください。
- 装置から全てのケーブルを取外してください。

**Per scollegare:**

**⚠ Pericolo:**

La corrente elettrica che attraversa i cavi di alimentazione, i cavi telefonici e i cavi per le comunicazioni è pericolosa. Per evitare il rischio di scosse elettriche, prima di procedere all'apertura del coperchio dell'elaboratore per installare il dispositivo, scollegare i cavi nel modo qui indicato. Il cavo di alimentazione deve essere inserito in una presa elettrica collegata correttamente a terra.

- Spegnerne tutto (posizione OFF).
- Innanzitutto, scollegare il cavo di alimentazione dalla presa. (nel Regno Unito, per disposizione di legge, è obbligatorio scollegare il cavo di alimentazione dopo aver scollegato il cavo telefonico).
- Scollegare i cavi di segnale dai connettori.
- Scollegare tutti i cavi dai dispositivi.

**Para desligar**

**⚠ Perigo:**

A corrente elétrica da unidade de alimentação, do telefone e dos cabos de comunicação é perigosa. Para evitar o risco de choques elétricos, desligue os cabos de acordo com as instruções relativas à instalação antes de abrir as tampas do computador para instalar este produto. O cabo de alimentação deve ser usado numa tomada devidamente ligada a terra.

- Desligue tudo
- Primeiro remova o cabo de alimentação da tomada. (De acordo com as leis do Reino Unido, o cabo de alimentação deve ser desligado depois do cabo da linha telefônica.)
- Remova os cabos de sinal dos receptáculos.
- Remova todos os cabos dos dispositivos.

**Odpojení:**

**⚠ Výstraha:**

Elektrický proud ze sit'ových, telefonních a komunikačních kabelů je nebezpečný. Abyste při instalaci tohoto výrobku předešli úrazu elektrickým proudem, před otevřením krytů počítače odpojte kabely dle obrázku. Sit'ový kabel musí být použit s řádně uzemněnou zásuvkou.

- Vypněte všechna připojená zařízení.
- Nejdříve odpojte sit'ový kabel ze zásuvky. (Ve Spojeném království musí být podle zákona sit'ový kabel odpojen až po odpojení telefonní přípojky).
- Odpojte signálové kabely.
- Odpojte všechny kabely periferních zařízení.

**Læs følgende inden frakobling:**

**⚠ Fare:**

Elektrisk strøm fra strømførende kabler og telefon- og kommunikationskabler er farlig. For at undgå elektrisk stød skal du sørge for at koble kablerne fra som vist, før du åbner computerens dæksler for at installere dette produkt. Den strømførende ledning skal tilsluttes en jvndet stikkontakt.

- SLUK for alt.
- Fjern først den strømførende ledning fra stikkantaten. (I Storbritannien skal den strømførende ledning frakobles efter telefonkablet iflg. lov).
- Fjern signalkabler fra kontakter.
- Fjern alle kabler fra enheder.

### Ontkoppelen

#### Gevaarlijk:

Elektrische stroom afkomstig uit netsnoeren, telefoonkabels en communicatiekabels kan gevaarlijk zijn. Als u dit produkt wilt installeren, moet u, ter voorkoming van elektrische schokken, voordat u de computer openmaakt de kabels, zoals afgebeeld, ontkoppelen. Sluit het netsnoer altijd aan op een geaard stopcontact.

- Zet alles UIT.
- Haal eerst de stekker uit het stopcontact. (In het Verenigd Koninkrijk bent u wettelijk verplicht eerst de telefoonkabel en pas dan het netsnoer los te maken.)
- Haal de signaalkabels uit de ingangen.
- Verwijder alle kabels van de apparaten.

### Pour déconnecter

#### Danger:

Le courant électrique des câbles électriques, téléphoniques et de communication est dangereux. Pour éviter tout risque d'électrocution lors de l'installation de ce produit, déconnectez les câbles tel que montré avant d'ouvrir les couvercles de l'ordinateur. Utilisez le câble d'alimentation avec une prise correctement raccordée à la terre.

- Éteignez tous les appareils.
- Débranchez d'abord le câble d'alimentation de la prise de courant. (Au Royaume-Uni, la réglementation exige que le câble d'alimentation soit débranché après le câble téléphonique.)
- Débranchez les câbles de transmission du signal des prises femelles.
- Débranchez tous les câbles des appareils.

### Irrota laite seuraavasti:

#### Vaara:

Virta-, puhelin- ja tietoliikennejohdoissa liikkuva sähkövirta on vaarallista. Voit tätä laitetta asentaessasi välttää sähköiskut irrottamalla johtimet esitetyllä tavalla ennen tietokoneen kansion avaamista. Virtajohto on liitettävä oikein maadoitettuun pistorasiaan.

- Katkaise kaikista laitteista virta.
- Irrota virtajohto pistorasiasta. (Yhdistyneiden Kuningaskuntien lain mukaan virtajohto on irrotettava ennen puhelinjohdon irrottamista.)
- Irrota signaalkaapelit vastakkeista.
- Irrota kaikki johdot laitteista.

### כדי לנתק:

#### סכנה:

זרם חשמלי מכבלי כח, טלפון ותקשורת מהווה סכנה. כדי למנוע התחשמלות, נתק את הכבלים לפי האיור לפני פתיחת מארז המחשב לשם התקנת מכשיר זה. את כבל החשמל יש לחבר לשקע מוארק כראוי.

- כבה את כל המפסקים.
- נתק תחילה את כבל החשמל מהשקע (בבריטניה החוק דורש לנתק את כבל החשמל אחרי כבל הטלפון).
- נתק את כבלי האותות משקעיהם.
- נתק את כל הכבלים מההתקנים השונים.

### Szétcsatlakoztatás

#### Balesetvesztély:

A hálózati, telefon és kommunikációs kábelben levő elektromos áram veszélyes. Az áramütés veszélyének elhárítása érdekében, a termék beszerelésekor, a számítógép burkolatának felnyitása előtt húzza ki a vezetékeket. A hálózati vezetékek megfelelően földeltnek kell lennie.

- Kapcsoljon mindent KI.
- Először a hálózati vezetéket húzza ki az aljzatból. (Az Egyesült Királyságban előírás, hogy a hálózati vezetéket a telefonvezeték után kell szétcsatlakoztatni.)
- Húzza ki a jel-kábelt az aljzatából.
- Húzza ki az összes vezetéket a berendezésekből.

차단하려면 :

⚠ 위험 :

전원, 전화, 통신 케이블에서 나오는 전류는 유해하다. 쇼크 위험을 없애려면 본 제품 설치를 위해 컴퓨터 뚜껑을 열기 전에 케이블을 차단한다. 전원 코드는 제대로 접지된 콘덴사와 사용돼야 한다.

- 모든 전원을 차단한다.
- 우선 콘덴사에서 전원 코드를 뺀다. (영국에서는 법으로, 전화선을 뺀 다음 전원 코드를 차단해야 한다.)
- 수신기로 부터 신축 케이블을 뺀다.
- 컴퓨터 장치에서 모든 케이블을 뺀다.

**Frakobling**

⚠ Fare:

Elektrisk strøm fra strøm -, telefon - og kommunikasjonskabler er farlig. For å unngå fare for støt, må du koble fra kabler, som vist, før du åpner datamaskindeksler for å installere dette produktet. Strømledningen må kun brukes i jordede stikkontakter.

- Slå alt AV.
- Trekk først ut strømledningen fra stikkontakten. (I Storbritannia sier loven at strømledningen må kobles fra etter telefonledningen.)
- Trekk ut signalkablene fra kontaktene.
- Trekk ut alle kablene fra enhetene.

**Aby rozłączyć:**

⚠ Ostrzeżenie:

Prąd elektryczny obecny w kablach zasilania, telefonicznych lub komunikacyjnych jest niebezpieczny. Aby uniknąć porażenia, przed otwarciem pokrywy komputera w celu zainstalowania tego wyrobu, należy odłączyć kable, jak to zostało pokazane. Musi być użyty przewód zasilania elektrycznego z odpowiednim uziemieniem.

- Wyłącz wszystko (położenie OFF).
- W pierwszej kolejności odłącz przewód zasilania elektrycznego z gniazdka. (W Wielkiej Brytanii prawo nakazuje, by przewód zasilania został odłączony po kablu linii telefonicznej).
- Wyłącz kable sygnałowe z gniazdek.
- Wyłącz wszystkie kable z urządzeń.

**Para desligar:**

⚠ Perigo:

A corrente eléctrica da unidade de alimentação, do telefone e dos cabos de comunicação é perigosa. Para evitar o risco de choques eléctricos, desligue o cabo de acordo com as indicações antes de abrir a caixa do computador para instalar este produto. O cabo de alimentação deve ser utilizado numa tomada devidamente ligada à terra.

- Desligue tudo.
- Primeiro, retire o cabo de alimentação da tomada. (De acordo com as leis do Reino Unido, o cabo de alimentação deve ser desligado depois do cabo da linha telefónica.)
- Retire os cabos de sinal das tomadas.
- Retire todos os cabos dos dispositivos.

**斷開步驟 :**

⚠ 危險 :

動力電纜、電話電纜和通信電纜上的電流是危險的。為避免電擊危險，在打開電腦機蓋安裝本產品之前斷開電纜，如圖所示。動力電纜必須妥善接地。

- 關掉一切電源。
- 首先將動力電纜從輸出端取下。(根據英國法律規定，動力電纜必須在電話電纜之後斷開。)
- 從插座上取下信號電纜。
- 從裝置上取下所有電纜。

### ***Izključenje:***

#### **⚠ Nevarnost:**

Struja iz električnega, telefonskega ali komunikacijskega voda je nevarna. V namenu, da se izognete šoku, izključite vode, kot kaže slika, preden dvignete računalniške pokrove, da bi napravo instalirali. Strujni vod je treba uporabljati s primerno ozemljitvijo.

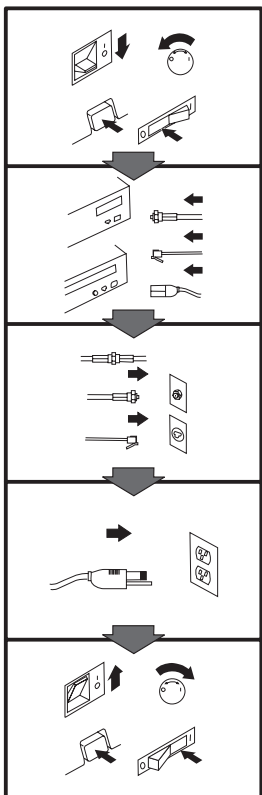
- Izključite vse (na "OFF").
- Najprej odstranite strujni vod iz izhodnega vtikaljšča. (V Veliki Britaniji je po zakonu treba strujni vod izključiti po telefonskem vodu).
- Odstranite signalne vode iz sprejemnikov.
- Odstranite vse vode iz naprav.

### ***Urkoppling***

#### **⚠ Fara:**

Ström från el-, tele- och kommunikationskablar måste behandlas med försiktighet. För att undvika att få en elektrisk stöt måste du innan du öppnar höljet på datorn koppla ur kablarna enligt beskrivningen nedan. Strömkabeln måste alltid användas i ett jordat uttag.

- Stäng av allting.
- Ta först ur strömkabeln från strömuttaget. (I Storbritannien måste enligt lag strömkabeln tas ur efter telefonkabeln.)
- Ta bort signalkablarna från uttagen.
- Ta bort alla kablarna från enheterna.



### To Connect:

#### ⚠ Danger:

Electrical current from power, telephone, and communication cables is hazardous. To avoid shock hazard, connect cables as shown after closing the computer covers. The power cord must be used with a properly grounded outlet.

- Turn everything OFF.
- Attach all cables to devices. (In the U.K., by law, the telephone cable must be connected after the power cord.)
- Attach signal cables to receptacles.
- Attach power cord to outlet.
- Turn device ON.

### Vor dem Anschließen:

#### ⚠ Vorsicht:

Befolgen Sie die folgenden Schritte, um gesundheitliche Schäden durch stromführende Telefon- und Verbindungskabel auszuschließen. Um eine Berührungsspannung zu vermeiden, Kabel nach dem Schließen der Computerabdeckungen, wie abgebildet, anschließen. Das Netzkabel darf nur an eine ordnungsgemäß geerdete Steckdose angeschlossen werden.

- Schalten Sie alle Geräte AUS.
- Schließen Sie alle Kabel an die Geräte an.
- Schließen Sie die Signalkabel an die dafür vorgesehenen Anschlußbuchsen an.
- Verbinden Sie das Netzkabel mit der Steckdose.
- Schalten Sie das Gerät EIN.

### Avant de vous connecter

#### ⚠ Danger:

Le courant électrique des câbles électriques, téléphoniques et de communication est dangereux. Pour éviter tout risque d'électrocution, connectez les câbles comme indiqué après avoir replacé les capots de l'ordinateur. Il convient d'utiliser le câble d'alimentation avec une prise correctement raccordée à la terre.

- Mettez tous les appareils hors tension.
- Raccordez l'ensemble des câbles aux périphériques. (Au Royaume-Uni, la législation exige que le câble téléphonique soit branché après le câble d'alimentation).
- Raccordez les câbles de signalisation aux prises femelles.
- Raccordez le câble d'alimentation à la prise de courant.
- Mettez les appareils sous tension.

### Para conectarse

#### ⚠ Peligro:

La corriente eléctrica procedente de cables de alimentación, teléfono y comunicaciones es peligrosa. Para evitar descargas eléctricas, conecte los cables tal y como se muestra después de cerrar las cubiertas del ordenador. El cable de alimentación debe utilizarse con una toma debidamente conectada a tierra.

- Desconecte todo.
- Conecte todos los cables a los dispositivos. (En el Reino Unido, la legislación determina que el cable de teléfono se conecte después del cable de alimentación.)
- Conecte los cables de señal de los receptáculos correspondientes.
- Conecte el cable de alimentación a una toma.
- Active el dispositivo.

接続時：

⚠ 危険：

電源、電話及び通信ケーブルからの電流は危険なものです。電気ショックの危険を避けるために、コンピューターのカバーを取り付け後に、次の順序でケーブルを接続してください。

- すべての電源を切ってください。
- すべてのケーブルを装置に接続してください。
- コネクタに通信ケーブルを接続してください。
- コンセントに電源コードを接続してください。
- 装置の電源を入れてください。

*Per collegare:*

⚠ Pericolo

La corrente elettrica che attraversa i cavi di alimentazione, i cavi telefonici e i cavi per le comunicazioni è pericolosa. Per evitare il rischio di scosse elettriche, collegare i cavi nel modo qui indicato solo dopo aver chiuso l'elaboratore con il coperchio. Il cavo di alimentazione deve essere inserito in una presa elettrica collegata correttamente a terra.

- Spegnerne tutto (posizione OFF).
- Collegare tutti i cavi ai dispositivi. (nel Regno Unito, per disposizione di legge, è obbligatorio collegare il cavo telefonico dopo aver collegato il cavo di alimentazione).
- Collegare i cavi di segnale agli appositi connettori.
- Collegare il cavo di alimentazione a una presa elettrica
- Accendere la periferica (posizione ON)

*Para ligar:*

⚠ Perigo:

A corrente elétrica da unidade de alimentação, do telefone e dos cabos de comunicação é perigosa. Para evitar o risco de choques elétricos, ligue os cabos de acordo com as instruções relativas à instalação depois de fechar as tampas do computador. O cabo de alimentação deve ser usado numa tomada devidamente ligada à terra.

- Desligue tudo
- Ligue os cabos aos dispositivos. (De acordo com as leis do Reino Unido, o cabo de alimentação deve ser desligado depois do cabo da linha telefônica.)
- Ligue os cabos de sinal aos receptáculos.
- Ligue o cabo de alimentação à tomada.
- Ligue o dispositivo.

*Připojení:*

⚠ Výstraha:

Elektrický proud ze síťových, telefonních a komunikačních kabelů je nebezpečný. Abyste předešli úrazu elektrickým proudem, kabely dle obrázku připojte až po uzavření krytů počítače. Síťový kabel musí být použit s řádně uzemněnou zásuvkou.

- Vypněte všechna zařízení.
- Připojte všechny kabely periferních zařízení. (Ve Spojeném království musí být podle zákona telefonní přípojka připojena až po připojení síťového kabelu).
- Připojte signálové kabely.
- Připojte síťový kabel do zásuvky.
- Zapněte přístroj.

*Læs følgende inden tilkobling:*

⚠ Fare:

Elektrisk strøm fra strømførende kabler og telefon- og kommunikationskabler er farlig. For at undgå elektrisk stød skal du sørge for at koble kablerne til som vist, før du lukker computerens dæksler igen. Den strømførende ledning skal tilsluttes en javdet stikkontakt.

- SLUK for alt.
- Tilslut alle kabler til enheder. (I Storbritannien skal telefonkablet tilsluttes efter den strømførende ledning iflg. lov).
- Tilslut signalkabler til kontakter.
- Tilslut den strømførende ledning til stikkontakten.
- TÆND for enheden.

### Aansluiten

#### Gevaarlijk:

Elektrische stroom afkomstig uit netsnoeren, telefoonkabels en communicatiekabels kan gevaarlijk zijn. Ter voorkoming van elektrische schokken, moet u nadat de computer dichtgemaakt is de kabels, zoals afgebeeld, aansluiten. Sluit het netsnoer altijd aan op een geaard stopcontact.

- Zet alles UIT.
- Bevestig de snoeren aan de apparaten. (In het Verenigd Koninkrijk bent u wettelijk verplicht eerst het netsnoer en pas dan de telefoonkabel aan te sluiten.)
- Bevestig de signaalkabels in de juiste ingangen.
- Steek de stekker van het netsnoer in het stopcontact.
- Zet het apparaat AAN.

### Pour connecter

#### Danger:

Le courant électrique des câbles électriques, téléphoniques et de communication est dangereux. Pour éviter tout risque d'électrocution, connectez les câbles tel que montré après avoir fermé les couvercles de l'ordinateur. Utilisez le câble d'alimentation avec une prise correctement raccordée à la terre.

- Mettez tous les appareils hors tension.
- Raccordez tous les câbles aux appareils. (Au Royaume-Uni, la réglementation exige que le câble téléphonique soit branché après le câble d'alimentation.)
- Raccordez les câbles de transmission du signal aux prises femelles.
- Raccordez le câble d'alimentation à la prise de courant.
- Mettez l'appareil sous tension.

### Kytke seuraavasti:

#### Vaara:

Virta-, puhelin- ja tietoliikennejohdoissa liikkuva sähkövirta on vaarallista. Voit välttää sähköiskut liittämällä johdot esitetyllä tavalla, sen jälkeen kun olet sulkenut tietokoneen kannet. Virtajohto on liitettävä oikein maadoitettuun pistorasiaan.

- Katkaise kaikista laitteista virta.
- Liitä kaikki johdot laitteisiin. (Yhdistyneiden Kuningaskuntien lain mukaan virtajohto on liitettävä ennen puhelinjohdon irrottamista.)
- Liitä signaaliikaapelit vastakkeisiin.
- Liitä virtajohto pistorasiaan.
- Kytke laitteeseen virta.

### כדי לחבר:

#### סכנה:

זרם חשמלי מכבלי כח, טלפון ותקשורת מהווה סכנה. כדי למנוע התחשמלות, חבר את הכבלים לפי האיור אחרי סגירת מארזי המחשב. את כבל החשמל יש לחבר לשקע מוארק כראוי.

- כבה את כל המפסקים.
- חבר את כל הכבלים להתקנים (בבריטניה החוק דורש לחבר את כבל הטלפון אחרי כבל החשמל).
- חבר את כבלי האותות לשקעייהם.
- חבר את כבל החשמל לשקע.
- הדלק את המכשיר.

### Csatlakoztatás:

#### Balesetveszély:

A hálózati, telefon és kommunikációs kábelben levő elektromos áram veszélyes. Az áramütés veszélyének elhárítása érdekében csak a számítógép burkolatának bezárása után csatlakoztassa a vezetékeket. A hálózati vezetéknek megfelelően földeltnek kell lennie.

- Kapcsoljon mindent KI.
- Csatlakoztassa a vezetékeket a berendezésekhez. (Az Egyesült Királyságban előírás, hogy a telefonvezeték a hálózati vezeték után kell csatlakoztatni.)
- Csatlakoztassa a jelkábelt az aljzatába.
- Csatlakoztassa a hálózati vezetéket az aljzatába.
- Kapcsolja BE a készüléket.



연결하려면 :

⚠ 위험 :

전원, 전화, 통신 케이블에서 나오는 전류는 유해하다. 쇼크 위험을 없애려면 본 제품 설치를 위해 컴퓨터 뚜껑을 닫은 후에 케이블을 연결한다. 전원 코드는 제대로 집지된 콘덴사와 사용돼야 한다.

- 모든 전원을 차단한다.
- 장치에 모든 케이블을 연결한다. (영국에서는 법으로, 전화선을 먼저 연결한 다음 전원코드를 연결해야 한다.)
- 수신기에 신호 케이블을 연결한다.
- 콘덴사에 전원 코드를 연결한다.
- 컴퓨터 장치를 켜다.

**Tilkobling**

⚠ Fare:

Elektrisk strøm fra strøm-, telefon- og kommunikationskabler er farlig. For å unngå fare for støt, må du koble til kabler, som vist, etter at datamaskindekslene er lukket. Strømledningen må kun brukes i jordede stikkontakter.

- Slå alt AV.
- Koble alle kablene til enhetene. (I Storbritannia sier loven at telefonledningen må kobles til etter strømledningen.)
- Sett signalkablene i kontaktene.
- Sett strømledningen i stikkontakten.
- Slå apparatet PÅ.

**Aby podłączyć:**

⚠ Ostrzeżenie:

Prąd elektryczny obecny w kablach zasilania, telefonicznych lub komunikacyjnych jest niebezpieczny. Aby uniknąć porażenia, po zamknięciu pokryw komputera podłącz kable jak to zostało pokazane. Musi być użyty przewód zasilania elektrycznego z odpowiednim uziemieniem.

- Wyłącz wszystko (położenie OFF)
- Podłącz wszystkie kable do urządzeń (W Wielkiej Brytanii prawo nakazuje by kabel linii telefonicznej został podłączony po przewodzie zasilania).
- Podłącz kable sygnałowe do gniazdek.
- Podłącz przewód zasilania do gniazdka.
- Włącz urządzenie. (Polożenie ON).

**Para ligar:**

⚠ Perigo:

A corrente eléctrica da unidade de alimentação, do telefone e dos cabos de comunicação é perigosa. Para evitar o risco de choques eléctricos, ligue os cabos de acordo com as indicações antes de fechar a caixa do computador. O cabo de alimentação deve ser utilizado numa tomada devidamente ligada à terra.

- Desligue tudo.
- Ligue os cabos aos dispositivos. (De acordo com as leis do Reino Unido, o cabo do telefone deve ser ligado depois do cabo de alimentação.)
- Ligue os cabos de sinal as tomadas.
- Ligue o cabo de alimentação à tomada.
- Ligue o dispositivo.

**連接步驟 :**

⚠ 危險 :

動力電纜、電話電纜和通信電纜上的電流是危險的。為避免電擊危險，在蓋上電腦機蓋之後連接電纜，如圖所示。動力電纜必須妥善接地。

- 關掉一切電源。
- 將所有電纜連接於裝置。(根據英國法律規定，電話電纜必須在動力電纜之前連接。)
- 將信號電纜連接於插座。
- 將動力電纜連接於輸出端。
- 打開裝置電源。

### ***Vključenje:***

#### **⚠ Nevarnost:**

Struja iz električnih, telefonskih in komunikacijskih vodov je nevarna. Da se izognete šoku, vključite vode, kot kaže slika, po tem, ko ste zaprli računalniške pokrove. Strujni vod je treba uporabljati s primerno ozemljitvijo.

- Izključite vse (na "OFF").
- Priključite vse vode na napravo. (V Veliki Britaniji je po zakonu treba telefonski vod vključiti po strujnem vodu).
- Priključite signalne vode sprejemnikom.
- Priključite električni vod izhodnemu vtikalšču.
- Vključite napravo (na "ON").

### ***Anslutning***

#### **⚠ Fara:**

Ström från el-, tele- och kommunikationskablar måste behandlas med försiktighet. För att undvika att få en elektrisk stöt måste du sedan du stängt höljet på datorn ansluta kablarna enligt beskrivningen nedan. Strömkabeln måste alltid användas i ett jordat uttag.

- Stäng av allting.
- Anslut alla kablarna till enheterna. (I Storbritannien måste enligt lag telefonkabeln anslutas efter strömkabeln.)
- Anslut signalkablarna till uttagen.
- Anslut strömkabeln till strömuttaget.
- Slå på enheten.

## ***Appendix B.*** ***Help and Service Information***

If you have questions about your new Options by IBM product, or require technical assistance, visit the IBM Personal Computing Support Web site at <http://www.pc.ibm.com/support>. For information about IBM, IBM PC products, or Options by IBM visit the IBM Personal Computing Web site at <http://www.pc.ibm.com>. Additionally, you can receive information from the IBM Automated Fax system at 1-800-426-3395 (in Canada, 1-800-465-3299), or from the Personal Systems Group Bulletin Board System (PSG BBS) at 1-919-517-0001. You can also get help and information through the IBM PC HelpCenter, 24 hours a day, seven days a week. Response time may vary depending on the number and nature of the calls received.

Marketing, installation, and configuration support through the HelpCenter will be withdrawn or made available for a fee, at IBM's discretion, 90 days after the option has been withdrawn from marketing. Additional support offerings, including step-by-step installation assistance, are available for a nominal fee.

During the warranty period, assistance for replacement or exchange of defective components is available. In addition, if your IBM option is installed in an IBM computer, you might be entitled to service at your location. Your technical support representative can help you determine the best alternative.

---

### **Step 1: Problem Solving**

You may be able to solve the problem yourself. Before calling the HelpCenter, please prepare for the call by following these steps:

If the green busy light on your Zip IDE drive does not flash, verify that the computer is receiving power, that the power cable connection to the Zip IDE drive is secure, or that there is a disk in the drive.

If the Zip IDE drive is not assigned a drive letter, or the Zip Tools software cannot find the Zip drive, try the following:

1. Be sure pin 1 is properly connected on all IDE interface connections. The stripe on the interface cable must align with pin 1 on each connection. If the cable does not have a keyed connector, be sure that the connector is correctly aligned with the connector pins.
2. Be sure that the jumper settings on all the drives in your computer are correct. For more information about the jumper settings, see "Step 3. Setting the Configuration Jumpers" on page 2-3.
3. If the Zip IDE drive is not recognized by your computer, your computer might have a BIOS that cannot recognize removable ATAPI drives. You might need to obtain a BIOS update.
4. Be sure that you have correctly installed the Zip drive device driver. For instructions on installing the device driver, go to "Installing the Zip Drive Software" on page 2-7.

5. If you are using Windows 95, be sure the system is running in 32-bit (Protected) mode. To determine if your system is running in 32-bit mode, go to **My Computer** and select **Properties**. Select the Performance tab and verify that File System and Virtual Memory are listed as 32-bit. If your system is running in 16-bit mode, refer to your operating system documentation for information on converting to 32-bit mode.

---

## Step 2: Preparing for the Call

To assist the technical support representative, have available as much of the following information as possible:

1. Option name
2. Option number
3. Proof of purchase
4. Computer manufacturer, model, serial number (if IBM), and manual
5. Exact wording of the error message (if any)
6. Description of the problem
7. Hardware and software configuration information for your system

If possible, be at your computer. Your technical support representative might want to walk you through the problem during the call.

---

## Step 3: Placing the Call to IBM

If you call 90 days or more after the date of withdrawal or after your warranty has expired, you might be charged a fee.

For the support telephone number and support hours by country, refer to the following table or to the enclosed technical support insert. If the number is not provided, contact your IBM reseller or IBM marketing representative.

<i>Support 24 hours a day, 7 days a week</i>	
Canada	1-800-565-3344
U.S.A. / Puerto Rico	1-800-772-2227

## Additional Technical Support Resources

Online technical support is available during the life of your product. Online assistance can be obtained through the Personal Computing Support Web site, the PSG Electronic Bulletin Board System, and the IBM Automated Fax System.

<i>Online Technical Support</i>	
IBM Personal Computing Support Web Site	<a href="http://www.pc.ibm.com/support">http://www.pc.ibm.com/support</a>
IBM PSG BBS	1-919-517-0001
IBM Automated Fax System	1-800-426-3395 1-800-465-3299 (in Canada)

## Appendix C. Product Warranty and Notices

---

### Product Warranty

The following warranty information applies to products purchased in the United States, Canada, and Puerto Rico. For warranty terms and conditions for products purchased in other countries, see the enclosed Warranty insert, or contact your IBM reseller or IBM marketing representative.

International Business Machines Corporation

Armonk, New York, 10504

### Statement of Limited Warranty

*The warranties provided by IBM in this Statement of Limited Warranty apply only to Machines you originally purchase for your use, and not for resale, from IBM or your reseller. The term "Machine" means an IBM machine, its features, conversions, upgrades, elements, or accessories, or any combination of them. Unless IBM specifies otherwise, the following warranties apply only in the country where you acquire the Machine. If you have any questions, contact IBM or your reseller.*

**Machine:** Zip 100 MB IDE Internal Drive

**Warranty Period\*:** Three Years

*\*Contact your place of purchase for warranty service information.*

### Production Status

Each Machine is manufactured from new parts, or new and used parts. In some cases, the Machine may not be new and may have been previously

installed. Regardless of the Machine's production status, IBM's warranty terms apply.

### The IBM Warranty for Machines

IBM warrants that each Machine 1) is free from defects in materials and workmanship and 2) conforms to IBM's Official Published Specifications. The warranty period for a Machine is a specified, fixed period commencing on its Date of Installation. The date on your receipt is the Date of Installation, unless IBM or your reseller informs you otherwise.

During the warranty period IBM or your reseller, if authorized by IBM, will provide warranty service under the type of service designated for the Machine and will manage and install engineering changes that apply to the Machine.

For IBM or your reseller to provide warranty service for a feature, conversion, or upgrade, IBM or your reseller may require that the Machine on which it is installed be 1) for certain Machines, the designated, serial-numbered Machine and 2) at an engineering-change level compatible with the feature, conversion, or upgrade. Many of these transactions involve the removal of parts and their return to IBM. You represent that all removed parts are genuine and unaltered. A part that replaces a removed part will assume the warranty service status of the replaced part.

If a Machine does not function as warranted during the warranty period, IBM or your reseller will repair it or replace it with one that is at least functionally equivalent, without charge. The replacement may not be new, but will be in good working order. If IBM or your reseller is unable to repair or replace the Machine, you may return it to your place of purchase and your money will be refunded.

If you transfer a Machine to another user, warranty service is available to that user for the remainder of the warranty period. You should give your proof of purchase and this Statement to that user. However, for Machines which have a life-time warranty, this warranty is not transferable.

## Warranty Service

To obtain warranty service for the Machine, you should contact your reseller or call IBM. In the United States, call IBM at **1-800-772-2227**. In Canada, call IBM at **1-800-565-3344**. You may be required to present proof of purchase.

IBM or your reseller will provide certain types of repair and exchange service, either at your location or at IBM's or your reseller's service center, to restore a Machine to good working order.

When a type of service involves the exchange of a Machine or part, the item IBM or your reseller replaces becomes its property and the replacement becomes yours. You represent that all removed items are genuine and unaltered. The replacement may not be new, but will be in good working order and at least functionally equivalent to the item replaced. The replacement assumes the warranty service status of the replaced item. Before IBM or your reseller exchanges a Machine or part, you agree to remove all features, parts, options, alterations, and attachments not under warranty service. You also agree to ensure that the Machine is free of any legal obligations or restrictions that prevent its exchange.

You agree to:

1. obtain authorization from the owner to have IBM or your reseller service a Machine that you do not own; and
2. where applicable, before service is provided —
  - a. follow the problem determination, problem analysis, and service request procedures that IBM or your reseller provide,
  - b. secure all programs, data, and funds contained in a Machine, and
  - c. inform IBM or your reseller of changes in a Machine's location.

IBM is responsible for loss of, or damage to, your Machine while it is 1) in IBM's possession or 2) in transit in those cases where IBM is responsible for the transportation charges.

## Extent of Warranty

### 3-14 Zip 100MB IDE Internal Drive User's Guide

IBM does not warrant uninterrupted or error-free operation of a Machine.

The warranties may be voided by misuse, accident, modification, unsuitable physical or operating environment, improper maintenance by you, removal or alteration of Machine or parts identification labels, or failure caused by a product for which IBM is not responsible.

THESE WARRANTIES REPLACE ALL OTHER WARRANTIES OR CONDITIONS, EXPRESS OR IMPLIED, INCLUDING, BUT NOT LIMITED TO, THE IMPLIED WARRANTIES OR CONDITIONS OF MERCHANTABILITY AND FITNESS FOR A PARTICULAR PURPOSE. THESE WARRANTIES GIVE YOU SPECIFIC LEGAL RIGHTS AND YOU MAY ALSO HAVE OTHER RIGHTS WHICH VARY FROM JURISDICTION TO JURISDICTION. SOME JURISDICTIONS DO NOT ALLOW THE EXCLUSION OR LIMITATION OF EXPRESS OR IMPLIED WARRANTIES, SO THE ABOVE EXCLUSION OR LIMITATION MAY NOT APPLY TO YOU. IN THAT EVENT SUCH WARRANTIES ARE LIMITED IN DURATION TO THE WARRANTY PERIOD. NO WARRANTIES APPLY AFTER THAT PERIOD.

## Limitation of Liability

Circumstances may arise where, because of a default on IBM's part or other liability you are entitled to recover damages from IBM. In each such instance, regardless of the basis on which you are entitled to claim damages from IBM (including fundamental breach, negligence, misrepresentation, or other contract or tort claim), IBM is liable only for:

1. damages for bodily injury (including death) and damage to real property and tangible personal property; and
2. the amount of any other actual direct damages or loss, up to the greater of U.S. \$100,000 or the charges (if recurring, 12 months' charges apply) for the Machine that is the subject of the claim.

UNDER NO CIRCUMSTANCES IS IBM LIABLE FOR ANY OF THE FOLLOWING: 1) THIRD-PARTY CLAIMS AGAINST YOU FOR LOSSES OR DAMAGES (OTHER THAN THOSE UNDER THE FIRST ITEM LISTED ABOVE); 2) LOSS OF, OR DAMAGE TO, YOUR RECORDS OR DATA; OR 3) SPECIAL, INCIDENTAL, OR INDIRECT DAMAGES OR FOR ANY ECONOMIC CONSEQUENTIAL DAMAGES (INCLUDING LOST PROFITS OR SAVINGS), EVEN IF IBM OR YOUR RESELLER IS INFORMED OF THEIR POSSIBILITY. SOME JURISDICTIONS DO NOT ALLOW THE EXCLUSION OR LIMITATION OF INCIDENTAL OR CONSEQUENTIAL DAMAGES, SO THE ABOVE EXCLUSION OR LIMITATION MAY NOT APPLY TO YOU.

---

## Notices

References in this publication to IBM products, programs, or services do not imply that IBM intends to make these available in all countries in which IBM operates. Any reference to an IBM product, program, or service is not intended to state or imply that only that IBM product, program, or service may be used. Subject to IBM's valid intellectual property or other legally protectable rights, any functionally equivalent product, program, or service may be used instead of the IBM product, program, or service. The evaluation and verification of operation in conjunction with other products, except those expressly designated by IBM, are the responsibility of the user.

IBM may have patents or pending patent applications covering subject matter in this document. The furnishing of this document does not give you any license to these patents. You can send license inquiries, in writing, to:

IBM Director of Licensing  
IBM Corporation  
500 Columbus Avenue  
Thornwood, NY 10594  
U.S.A.

---

## Trademarks

The following terms are trademarks of the IBM Corporation in the United States or other countries or both:

HelpCenter                      IBM                      OS/2

Microsoft, Windows, and Windows NT are trademarks or registered trademarks of Microsoft Corporation.

Other company, product, or service names may be trademarks or service marks of others.

---

## Electronic Emission Notices

Zip 100 MB IDE Internal Drive

### Federal Communications Commission (FCC) Statement

**Note:** This equipment has been tested and found to comply with the limits for a Class B digital device, pursuant to Part 15 of the FCC Rules. These limits are designed to provide reasonable protection against harmful interference in a residential installation. This equipment generates, uses, and can radiate radio frequency energy and, if not installed and used in accordance with the instructions, may cause harmful interference to radio communications. However, there is no guarantee that interference will not occur in a particular installation. If this equipment does cause harmful interference to radio or television reception, which can be determined by turning the equipment off and on, the user is encouraged to try to correct the interference by one or more of the following measures:

- Reorient or relocate the receiving antenna.
- Increase the separation between the equipment and receiver.
- Connect the equipment into an outlet on a circuit different from that to which the receiver is connected.
- Consult an IBM authorized dealer or service representative for help.

Properly shielded and grounded cables and connectors must be used in order to meet FCC emission limits. Proper cables and connectors are available from IBM authorized dealers. IBM is not responsible for any radio or television interference caused by using other than recommended cables and connectors or by unauthorized changes or modifications to this equipment. Unauthorized changes or modifications could void the user's authority to operate the equipment.



This device complies with Part 15 of the FCC Rules. Operation is subject to the following two conditions: (1) this device may not cause harmful interference, and (2) this device must accept any interference received, including interference that may cause undesired operation.

Responsible Party:

International Business Machines Corporation  
New Orchard Road  
Armonk, NY 10504  
Telephone: 1-919-543-2193

### **Industry Canada Class B Emission Compliance Statement**

This Class B digital apparatus complies with Canadian ICES-003.

### **Avis de conformité à la réglementation d'Industrie Canada**

Cet appareil numérique de la classe B est conforme à la norme NMB-003 du Canada.

### **Deutsche EMV-Direktive (electromagnetische Verträglichkeit)**

Dieses Gerät ist berechtigt in Übereinstimmung mit dem deutschen EMVG vom 9.Nov.92 das EG-Konformitätszeichen zu führen.

Der Aussteller der Konformitätserklärung ist die IBM UK, Greenock.

Dieses Gerät erfüllt die Bedingungen der EN 55022 Klasse B.

### **European Union - Emission Directive**

This product is in conformity with the protection requirements of EU Council Directive 89/366/ECC on the approximation of the laws of the Member States relating to electromagnetic compatibility.

IBM can not accept responsibility for any failure to satisfy the protection requirements resulting from a non-recommended modification of the product, including the fitting of non-IBM option cards.

This product has been tested and found to comply with the limits for Class B Information Technology Equipment according to CISPR 22 / European Standard EN 55022. The limits for Class B equipment were derived for typical residential environments to provide reasonable protection against interference with licensed communication devices.

### **Union Européenne - Directive Conformité électromagnétique**

Ce produit est conforme aux exigences de protection de la Directive 89/336/EEC du Conseil de l'UE sur le rapprochement des lois des États membres en matière de compatibilité électromagnétique.

IBM ne peut accepter aucune responsabilité pour le manquement aux exigences de protection résultant d'une modification non recommandée du produit, y compris l'installation de cartes autres que les cartes IBM.

Ce produit a été testé et il satisfait les conditions de l'équipement informatique de Classe B en vertu de CISPR22 / Standard européen EN 55022. Les conditions pour l'équipement de Classe B ont été définies en fonction d'un contexte résidentiel ordinaire afin de fournir une protection raisonnable contre l'interférence d'appareils de communication autorisés.

### Unione Europea - Direttiva EMC (Conformidad electromagnética)

Este producto satisface los requisitos de protección del Consejo de la UE, Directiva 89/336/CEE en lo que a la legislatura de los Estados Miembros sobre compatibilidad electromagnética se refiere.

IBM no puede aceptar responsabilidad alguna si este producto deja de satisfacer dichos requisitos de protección como resultado de una modificación no recomendada del producto, incluyendo el ajuste de tarjetas de opción que no sean IBM.

Este producto ha sido probado y satisface los límites para Equipos Informáticos Clase B de conformidad con el Estándar CISPR22 y el Estándar Europeo EN 55022. Los límites para los equipos de Clase B se han establecido para entornos residenciales típicos a fin de proporcionar una protección razonable contra las interferencias con dispositivos de comunicación licenciados.

### Union Eurpea - Normativa EMC

Questo prodotto è conforme alle normative di protezione ai sensi della Direttiva del Consiglio dell'Unione Europea 89/336/CEE sull'armonizzazione legislativa degli stati membri in materia di compatibilità elettromagnetica.

IBM non accetta responsabilità alcuna per la mancata conformità alle normative di protezione dovuta a modifiche non consigliate al prodotto, compresa l'installazione di schede e componenti di marca diversa da IBM.

Le prove effettuate sul presente prodotto hanno accertato che esso rientra nei limiti stabiliti per le apparecchiature di informatica Classe B ai sensi del CISPR 22 / Norma Europea EN 55022. I limiti delle apparecchiature della Classe B sono stati stabiliti al fine di fornire ragionevole protezione da interferenze mediante dispositivi di comunicazione in concessione in ambienti residenziali tipici.

この装置は、情報処理装置等電波障害自主規制協議会（VCCI）の基準に基づくクラスB情報技術装置です。この装置は、家庭環境で使用することを目的としていますが、この装置がラジオやテレビジョン受信機に近接して使用されると、受信障害を引き起こすことがあります。  
取扱説明書に従って正しい取り扱いをして下さい。



# IBM

Part Number: 20L0354  
File Number: E72717A

Printed in U.S.A.

2 L 354

