

IBM Network Station Family of Thin Clients
Access for today, flexibility for tomorrow



Network Station Manager V2R1 Separation of Servers

August 29, 1999

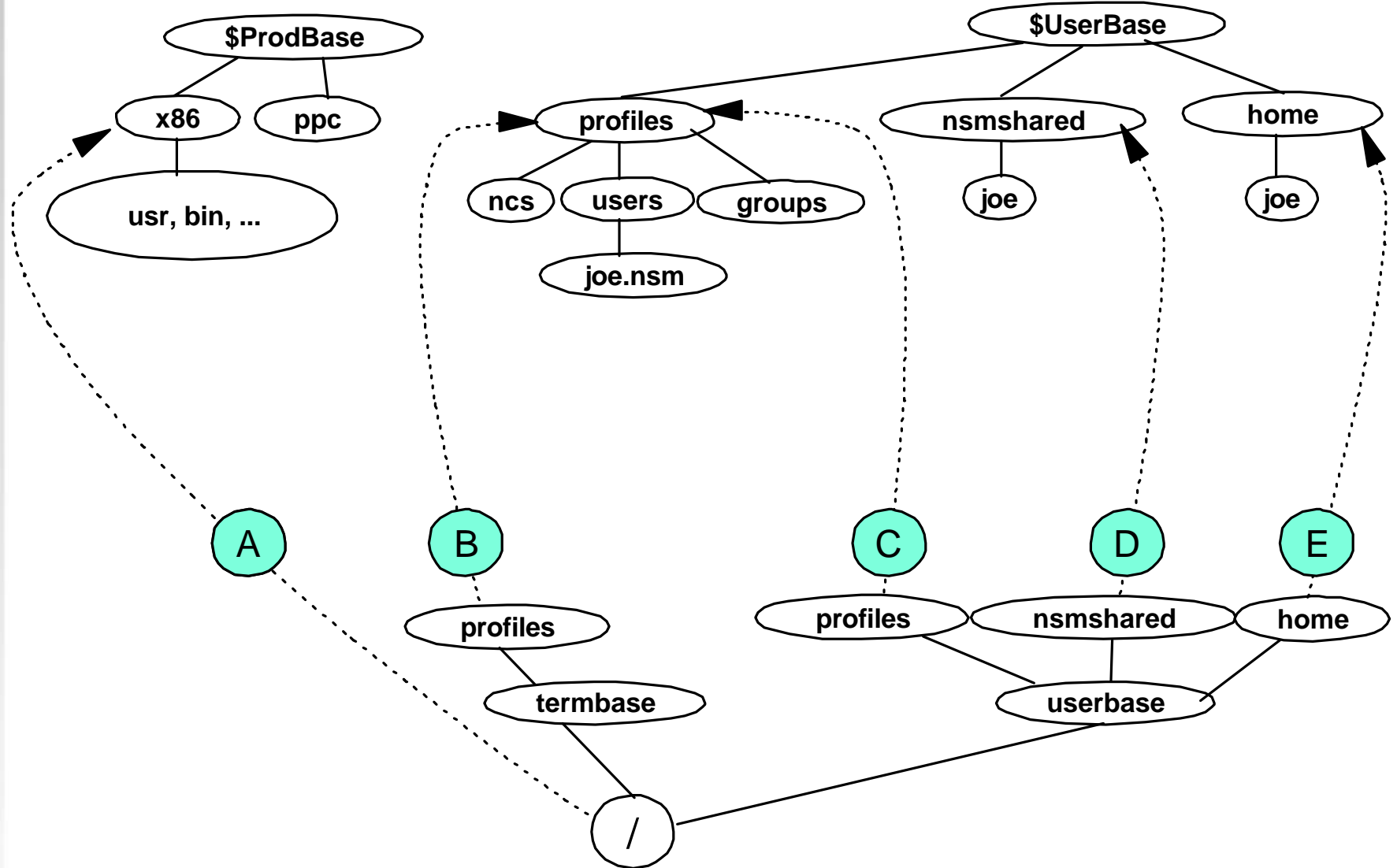




Topics

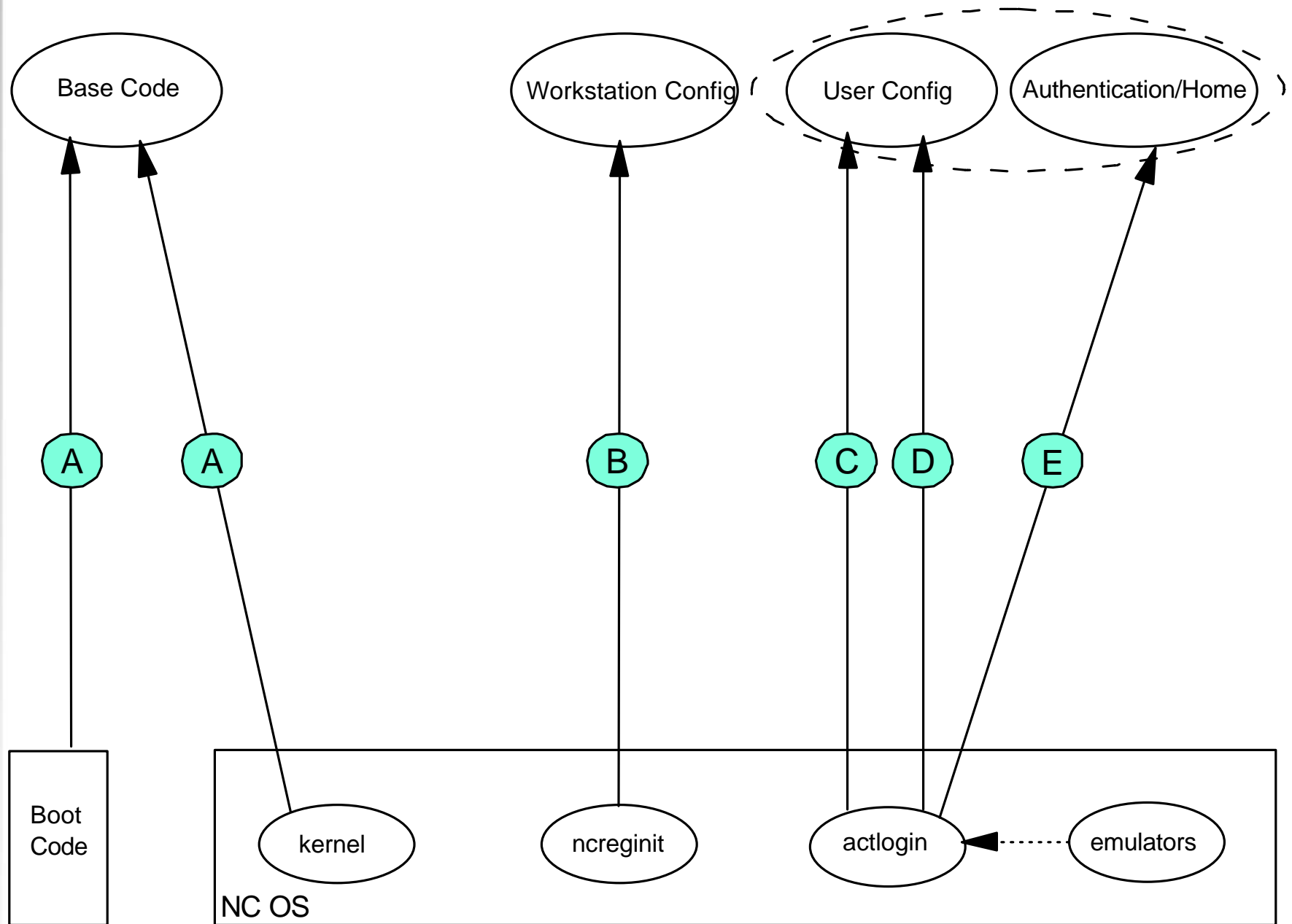
- Client-Server File System Mapping
- Server Types
- Separation of Servers Configuration
- Installable Units
 - ▶ **AIX and Microsoft Windows NT examples**
- Changes for V2R1
- Troubleshooting

Client-Server File System Mapping



S2200/2800 File System

Server Types





Separation of Servers Configuration

| Server Type | Purpose | Must Be Configured? | Default Server | Default Paths |
|------------------------|--------------------------------------|---------------------|----------------|--|
| A. Base Code | Boot File Location, Root File System | Yes | None | None |
| B. Workstation Config | Workstation Profiles | No | A | Ncreginit determines based on platform |
| C. User Config | User and group profiles | No | A | From login service |
| D. User Config | User shared directories | No | A | From login service |
| E. Authentication/Home | User home directories | No | A | From login service |



Separation of Servers Configuration (continued)

| Server Type | Configuration Mechanism | S300/1000? | S2200/2800? |
|------------------------|---|-------------------|-------------------|
| A. Base Code | NVRAM Settings DHCP Options 66,67,211 DHCP Option 219 | Yes Yes Yes | Yes Yes Yes |
| B. Workstation Config | NVRAM Setting DHCP Options 212,213,214 | Yes Yes | Yes Yes |
| C,D. User Config | Login Service Configuration File | Yes | Yes |
| E. Authentication/Home | NVRAM Setting DHCP Option 98 | No Yes | Yes Yes |



Installable Units

- Installable units can be used to create each server type.
- This feature is only supported on AIX and Windows NT.
- Creating custom servers may require additional system administration steps before and after installation.
- See the Advanced Information publication for examples.



Base Code Server (AIX)

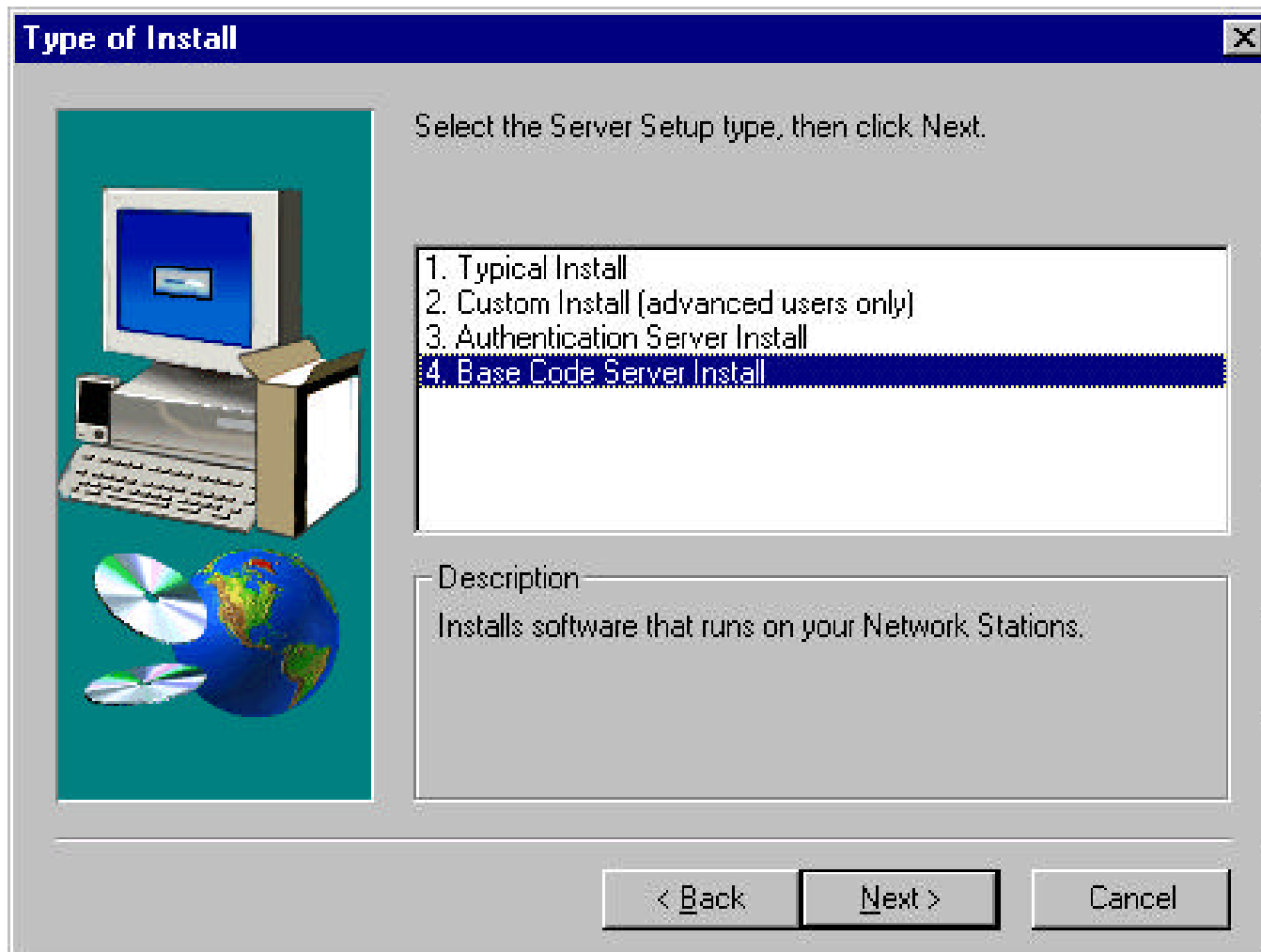
- **Install the following filesets:**
 - ▶ **eNetstation.base**
 - ▶ **eNetstation.S2x00.base**
 - ▶ **eNetstation.S300_1000.base**
- **The client filesets may be installed separately or together depending upon the type of IBM Network Station hardware models in your network.**



Base Code Server (Windows NT)

- Installs eNetwork On Demand and client files.
- Equivalent to V1R3 -bs install switch.
- No custom install is needed.

Base Code Server (Windows NT continued)





Combined Authentication and Configuration Server (AIX)

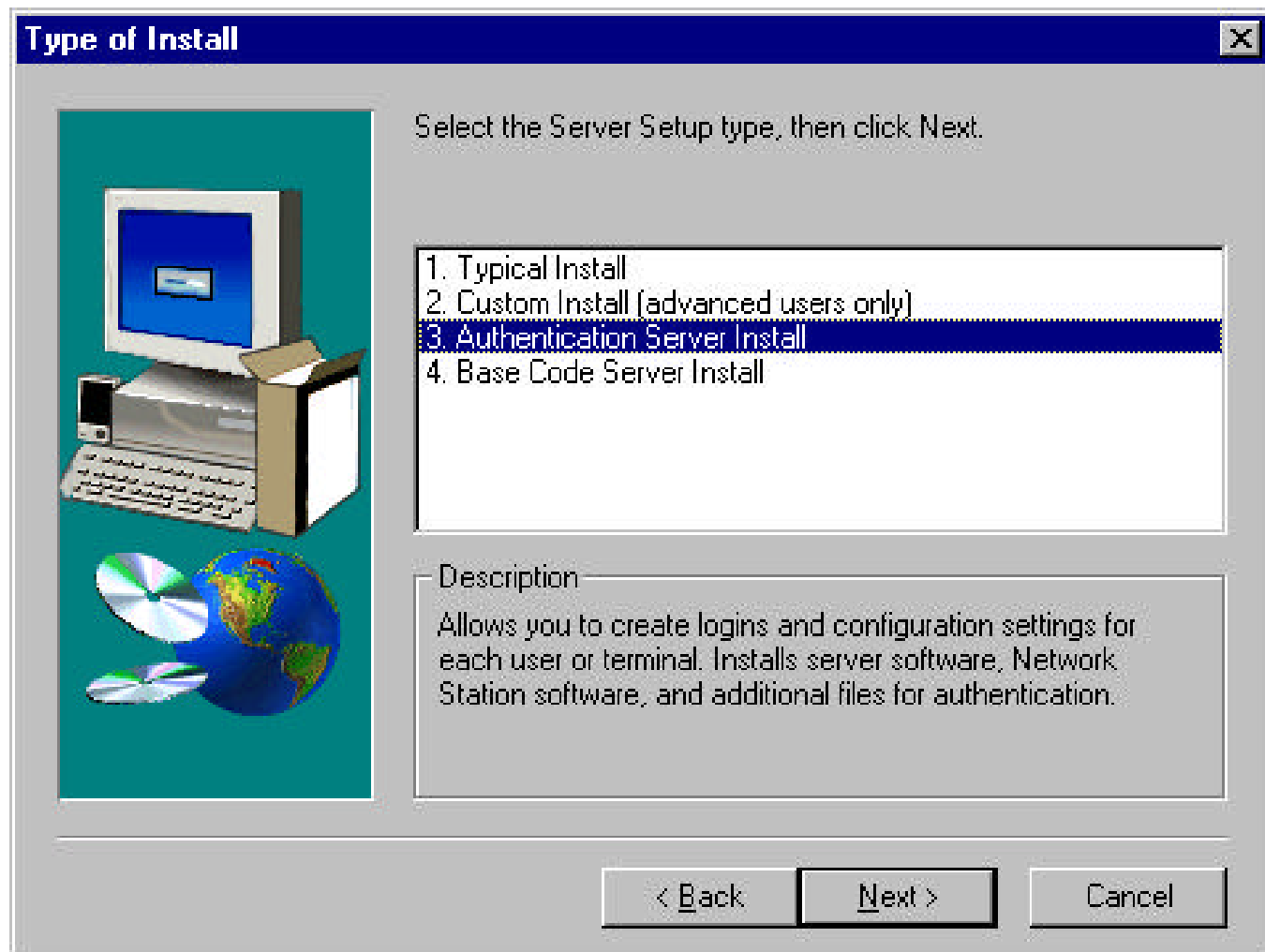
- **Install the following filesets:**
 - ▶ **eNetstation.base**
 - ▶ **eNetstation.nsm**
 - ▶ **eNetstation.login**
 - ▶ **eNetstation.msg.<lang>**
 - ▶ **eNetstation.nsm.<lang>**
 - ▶ **eNetstation.tools (optional)**



Combined Authentication and Configuration Server (Windows NT)

- Installs eNetwork On Demand, Network Station Manager Web application, and login service.
- Similar to V1R3 -as install switch, except does not install client files.
- No custom install is needed.
- Note that name for this option on install panel is somewhat misleading, since it creates a combined authentication and configuration server.

Combined Authentication + Configuration Server (Windows NT continued)





Other Server Types

- Other server types can be created by combining the appropriate components.
- On AIX, this is done by installing specific filesets.
- On Windows NT, this is done by choosing Custom Install on the "Type of Install" panel.
- Creating these servers may require additional system administration steps before and after installation.
- See the Advanced Information publication for examples of authentication server, configuration server, and file server for replicated NSM files.



Changes for V2R1

- Series 300/1000 and Series 2200/2800 have different boot code.
- DHCP Option 98 is used to specify authentication server.
- TFTP is only supported for downloading kernel, not for workstation configuration protocol.
- AIX and Windows NT have added installable units for client and server components.
- The server directory structure and exports have changed.
- The NCDi file service table has been replaced by standard UNIX file system mounts.
- NC OS processes created before authentication have uid/gid 0/0 as NFS credentials, instead of -2/-2.



Troubleshooting

- To see boot options, open an Advanced Diagnostics window and type "ncregget /boot/dhcp".
- To see existing mount points, open an Advanced Diagnostics window and type "mount".
- To see environment variables, open an Advanced Diagnostics window. Type "echo \$YourEnvVar" to see the variable you are interested in:
 - ▶ **SERVER_ADDRESS, BOOT_FS_TYPE**
 - ▶ **NC_AUTH_URL**
 - ▶ **HOME, PROFILES, NSMSHARED**
- To see file system activity during boot sequence, use tools specific to your platform, such as NFS or RFS traces.